



SZABO SCANDIC

Part of Europa Biosite

Produktinformation



Forschungsprodukte & Biochemikalien



Zellkultur & Verbrauchsmaterial



Diagnostik & molekulare Diagnostik



Laborgeräte & Service

Weitere Information auf den folgenden Seiten!
See the following pages for more information!



Lieferung & Zahlungsart

siehe unsere [Liefer- und Versandbedingungen](#)

Zuschläge

- Mindermengenzuschlag
- Trockeneiszuschlag
- Gefahrgutzuschlag
- Expressversand

SZABO-SCANDIC HandelsgmbH

Quellenstraße 110, A-1100 Wien

T. +43(0)1 489 3961-0

F. +43(0)1 489 3961-7

mail@szabo-scandic.com

www.szabo-scandic.com

[linkedin.com/company/szaboscandic](https://www.linkedin.com/company/szaboscandic) 

RPA2 purified MaxPab mouse polyclonal antibody (B01P) MaxPab®

Catalog # : H00006118-B01P

規格 : [50 ug]

List All

Specification

Product Description: Mouse polyclonal antibody raised against a full-length human RPA2 protein.

Immunogen: RPA2 (AAH12157, 1 a.a. ~ 270 a.a) full-length human protein.

Sequence:
 MWNSGFESYGSSSYGGAGGYTQSPGGFGSPAPSQAEEKSRARAQHIV
 PCTISQLLSATLVDEVFRIGNVEISQVTIVGIIRHAEKAPTIVYKIDDMTAAAP
 MDVRQWVDTDDTSSSENTVPPETYVKVAGHLRSFQNKSLVAFKIMPLE
 DMNEFTTHILEVINAHMVLKANSQPSAGRAPISNPGMSEAGNFGGNSFM
 PANGLTVAQNQVLNLIKACPRPEGLNFQDLKNQLKHMSVSSIKQAVDFLS
 NEGHYSTVDDDDHFKSTDAE

Host: Mouse

Reactivity: Human

Quality Control Testing: Antibody reactive against mammalian transfected lysate.

Storage Buffer: In 1x PBS, pH 7.4

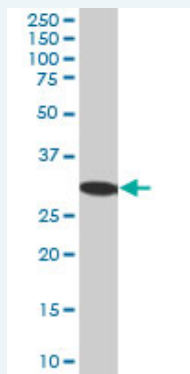
Storage Instruction: Store at -20°C or lower. Aliquot to avoid repeated freezing and thawing.

MSDS:  [Download](#)

Datasheet:  [Download](#)

Applications

Western Blot (Tissue lysate)



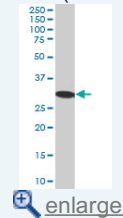
RPA2 MaxPab polyclonal antibody. Western Blot analysis of RPA2 expression in human kidney.

 [Protocol Download](#)

Western Blot (Tissue lysate)

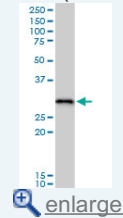
Application Image

Western Blot (Tissue lysate)



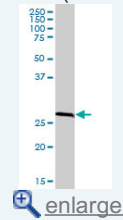
 [enlarge](#)


Western Blot (Tissue lysate)



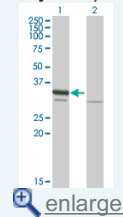
 [enlarge](#)

Western Blot (Tissue lysate)



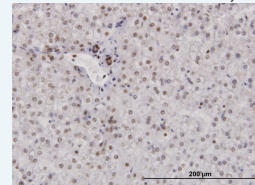
 [enlarge](#)


Western Blot (Transfected lysate)



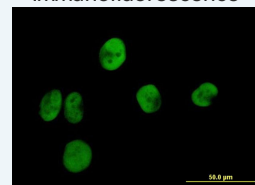
 [enlarge](#)

Immunohistochemistry (Formalin/PFA-fixed paraffin-embedded sections)

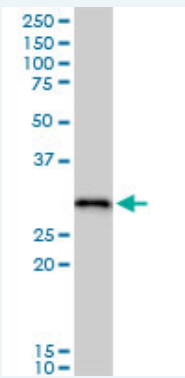


 [enlarge](#)

Immunofluorescence



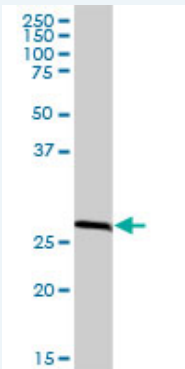
 [enlarge](#)



RPA2 MaxPab polyclonal antibody. Western Blot analysis of RPA2 expression in human stomach.

 [Protocol Download](#)

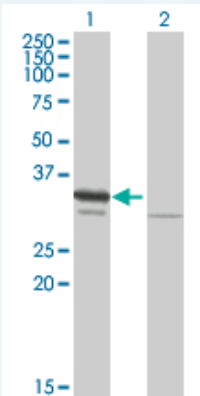
Western Blot (Tissue lysate)



RPA2 MaxPab polyclonal antibody. Western Blot analysis of RPA2 expression in human placenta.

 [Protocol Download](#)

Western Blot (Transfected lysate)



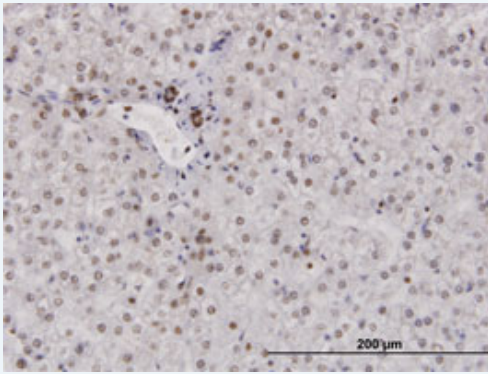
Western Blot analysis of RPA2 expression in transfected 293T cell line ([H00006118-T01](#)) by RPA2 MaxPab polyclonal antibody.

Lane 1: RPA2 transfected lysate(29.81 kDa).

Lane 2: Non-transfected lysate.

 [Protocol Download](#)

Immunohistochemistry (Formalin/PFA-fixed paraffin-embedded sections)

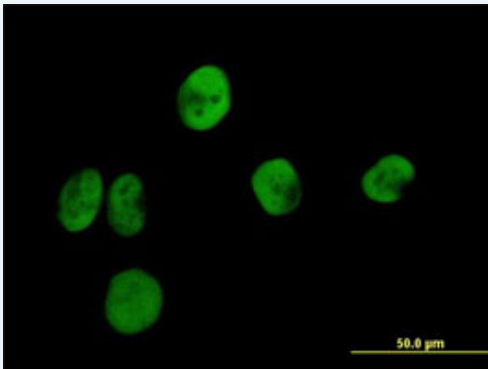


[enlarge this image](#)

Immunoperoxidase of purified MaxPab antibody to RPA2 on formalin-fixed paraffin-embedded human liver. [antibody concentration 3 ug/ml]

[Protocol Download](#)

Immunofluorescence



[enlarge this image](#)

Immunofluorescence of purified MaxPab antibody to RPA2 on HeLa cell. [antibody concentration 10 ug/ml]

[Protocol Download](#)

Gene Information

Entrez GeneID: [6118](#)

GeneBank Accession#: [BC012157](#)

Protein Accession#: [AAH12157](#)

Gene Name: RPA2

Gene Alias: REPA2,RPA32

Gene Description: replication protein A2, 32kDa

Omim ID: [179836](#)

Gene Ontology: [Hyperlink](#)

Other Designations: OTTHUMP00000004008,replication protein A2 (32kD)

Gene Pathway

[DNA replication](#) [Homologous recombination](#) [Mismatch repair](#) [Nucleotide excision repair](#)

Related Disease

[Genetic Predisposition to Disease](#) [Multiple Sclerosis](#) [Urinary Bladder Neoplasms](#)

[服務條款](#) | [隱私權政策](#) | [著作及商標](#) | [網站地圖](#)

©2016 亞諾法生技股份有限公司 Abnova Corporation. 版權所有.