



SZABO SCANDIC

Part of Europa Biosite

Produktinformation



Forschungsprodukte & Biochemikalien



Zellkultur & Verbrauchsmaterial



Diagnostik & molekulare Diagnostik



Laborgeräte & Service

Weitere Information auf den folgenden Seiten!
See the following pages for more information!



Lieferung & Zahlungsart

siehe unsere [Liefer- und Versandbedingungen](#)

Zuschläge

- Mindermengenzuschlag
- Trockeneiszuschlag
- Gefahrgutzuschlag
- Expressversand

SZABO-SCANDIC HandelsgmbH

Quellenstraße 110, A-1100 Wien

T. +43(0)1 489 3961-0

F. +43(0)1 489 3961-7

mail@szabo-scandic.com

www.szabo-scandic.com

[linkedin.com/company/szaboscandic](https://www.linkedin.com/company/szaboscandic) 

RPA3 monoclonal antibody (M01), clone 1F4

Catalog # : H00006119-M01

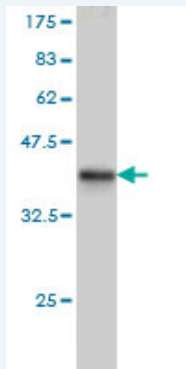
規格 : [100 ug]

List All

Specification

Product Description:	Mouse monoclonal antibody raised against a partial recombinant RPA3.
Immunogen:	RPA3 (AAH05264, 12 a.a. ~ 121 a.a) partial recombinant protein with GST tag. MW of the GST tag alone is 26 KDa.
Sequence:	INAGMLAQFIDKPVCFVGRLEKIHPTGKMFILSDGEGKNGTIELMEPLDEEI SGIVEVGRVTAKATILCTSYVQFKEDSHPFDLGLYNEAVKIHDFPQFY LGIVQHD
Host:	Mouse
Reactivity:	Human
Isotype:	IgG1 lambda

Quality Control Testing: Antibody Reactive Against Recombinant Protein.



Western Blot detection against Immunogen (37.73 KDa) .

Storage Buffer: In 1x PBS, pH 7.4

Storage Instruction: Store at -20°C or lower. Aliquot to avoid repeated freezing and thawing.

MSDS: [Download](#)

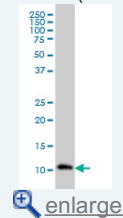
Datasheet: [Download](#)

Applications

Western Blot (Cell lysate)

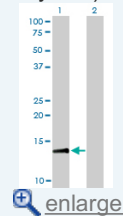
Application Image

Western Blot (Cell lysate)



[enlarge](#)

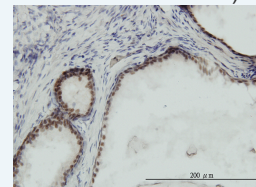
Western Blot (Transfected lysate)



[enlarge](#)

Western Blot (Recombinant protein)

Immunohistochemistry (Formalin/PFA-fixed paraffin-embedded sections)

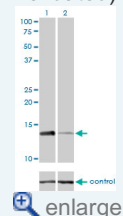


[enlarge](#)

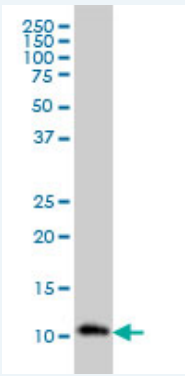
Sandwich ELISA (Recombinant protein)

ELISA

RNAi Knockdown (Antibody validated)



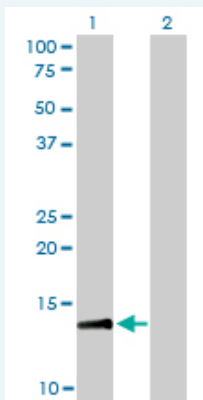
[enlarge](#)



RPA3 monoclonal antibody (M01), clone 1F4 Western Blot analysis of RPA3 expression in HL-60 (Cat # L014V1).

[Protocol Download](#)

Western Blot (Transfected lysate)



Western Blot analysis of RPA3 expression in transfected 293T cell line by RPA3 monoclonal antibody (M01), clone 1F4.

Lane 1: RPA3 transfected lysate(13.6 KDa).

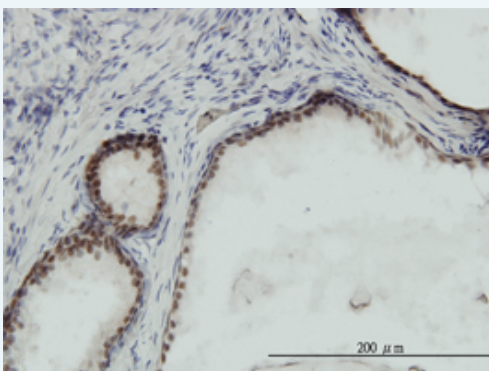
Lane 2: Non-transfected lysate.

[Protocol Download](#)

Western Blot (Recombinant protein)

[Protocol Download](#)

Immunohistochemistry (Formalin/PFA-fixed paraffin-embedded sections)



[enlarge this image](#)

Immunoperoxidase of monoclonal antibody to RPA3 on formalin-fixed paraffin-embedded human prostate. [antibody concentration 3 ug/ml]

[Protocol Download](#)

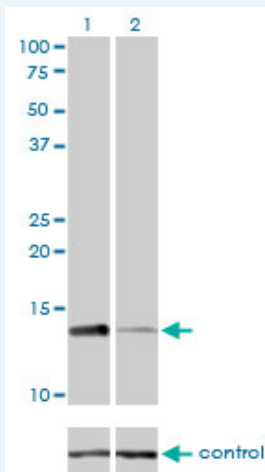
Sandwich ELISA (Recombinant protein)

Detection limit for recombinant GST tagged RPA3 is approximately 0.1ng/ml as a capture antibody.


[Protocol Download](#)

ELISA

RNAi Knockdown (Antibody validated)



Western blot analysis of RPA3 over-expressed 293 cell line, cotransfected with RPA3 Validated Chimera RNAi (Cat # H00006119-R01V) (Lane 2) or non-transfected control (Lane 1). Blot probed with RPA3 monoclonal antibody (M01), clone 1F4 (Cat # H00006119-M01). GAPDH (36.1 kDa) used as specificity and loading control.

 [Protocol Download](#)

Gene Information

Entrez GeneID: [6119](#)

GeneBank [BC005264](#)

Accession#:

Protein [AAH05264](#)

Accession#:

Gene Name: RPA3

Gene Alias: REPA3

Gene replication protein A3, 14kDa

Description:

Omim ID: [179837](#)

Gene Ontology: [Hyperlink](#)

Other OTTHUMP00000025366,replication protein A3 (14kD)

Designations:

Gene Pathway

[DNA replication](#) [Homologous recombination](#) [Mismatch repair](#) [Nucleotide excision repair](#)

Related Disease

[Breast cancer](#) [Carcinoma, Small Cell](#) [Carcinoma, Squamous Cell](#)

[Genetic Predisposition to Disease](#) [Head and Neck Neoplasms](#)

[Leukemia, Myeloid, Chronic-Phase](#) [Lung carcinoma, small cell](#) [Lung Neoplasms](#)

[Meningeal Neoplasms](#) [Meningioma](#) [Multiple Sclerosis](#) [Urinary Bladder Neoplasms](#)

[Werner syndrome](#)