



SZABO SCANDIC

Part of Europa Biosite

Produktinformation



Forschungsprodukte & Biochemikalien



Zellkultur & Verbrauchsmaterial



Diagnostik & molekulare Diagnostik



Laborgeräte & Service

Weitere Information auf den folgenden Seiten!
See the following pages for more information!



Lieferung & Zahlungsart

siehe unsere [Liefer- und Versandbedingungen](#)

Zuschläge

- Mindermengenzuschlag
- Trockeneiszuschlag
- Gefahrgutzuschlag
- Expressversand

SZABO-SCANDIC HandelsgmbH

Quellenstraße 110, A-1100 Wien

T. +43(0)1 489 3961-0

F. +43(0)1 489 3961-7

mail@szabo-scandic.com

www.szabo-scandic.com

[linkedin.com/company/szaboscandic](https://www.linkedin.com/company/szaboscandic) 



RPE purified MaxPab mouse polyclonal antibody (B01P) MaxPab®

Catalog # : H00006120-B01P

規格 : [50 ug]

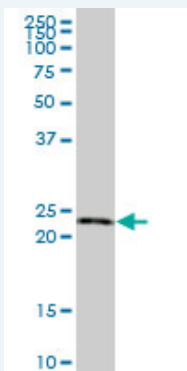
[List All](#)

Specification

Product Description:	Mouse polyclonal antibody raised against a full-length human RPE protein.
Immunogen:	RPE (AAH16764, 1 a.a. ~ 228 a.a) full-length human protein.
Sequence:	MASGCKIGPSILNSDLANLGAECLRMLDSGADYLHLDVMDGHFVPNITFG HPVVESLRKQLGQDPFFDMHMMVSKPEQWVKPMAVAGANQYTFHLEA TENPGALIKDIRENGMKVGLAIKPGTSVEYLAPWANQIDMALVMTVEPGF GGQKFMEDMMPKVHWRRTQFPSLDIEVDGGVGPDTVHKCAEAGANMIV SGSAIMRSEDPRSVINLLRNVCSAAQKRSLDR
Host:	Mouse
Reactivity:	Human
Quality Control Testing:	Antibody reactive against mammalian transfected lysate.
Storage Buffer:	In 1x PBS, pH 7.4
Storage Instruction:	Store at -20°C or lower. Aliquot to avoid repeated freezing and thawing.
MSDS:	 Download
Datasheet:	 Download

Applications

Western Blot (Tissue lysate)



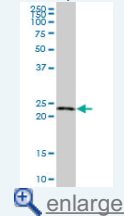
RPE MaxPab polyclonal antibody. Western Blot analysis of RPE expression in human liver.

 [Protocol Download](#)

Western Blot (Transfected lysate)

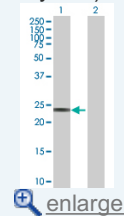
Application Image


Western Blot (Tissue lysate)



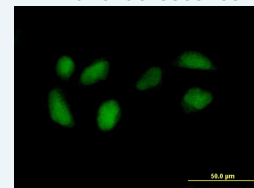
 [enlarge](#)

Western Blot (Transfected lysate)

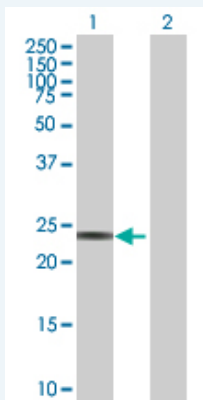


 [enlarge](#)

Immunofluorescence



 [enlarge](#)

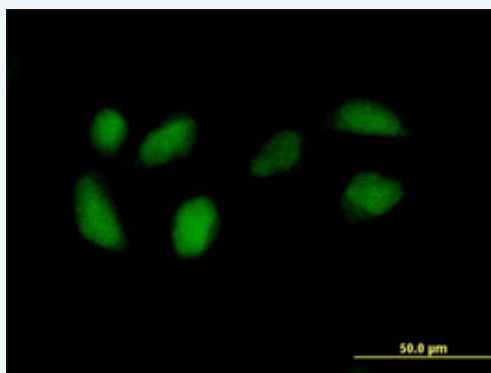


Western Blot analysis of RPE expression in transfected 293T cell line ([H00006120-T01](#)) by RPE MaxPab polyclonal antibody.

Lane 1: RPE transfected lysate(25.19 KDa).
Lane 2: Non-transfected lysate.

[Protocol Download](#)

Immunofluorescence



enlarge this image

Immunofluorescence of purified MaxPab antibody to RPE on HeLa cell. [antibody concentration 10 ug/ml]

[Protocol Download](#)

Gene Information

Entrez GeneID: [6120](#)

GeneBank [BC016764](#)
Accession#:

Protein [AAH16764](#)
Accession#:

Gene Name: RPE

Gene Alias: MGC2636,RPE2-1

Gene Description: ribulose-5-phosphate-3-epimerase

Omim ID: [180480](#)

Gene Ontology: [Hyperlink](#)

Other Designations: OTTHUMP00000163939

Gene Pathway

[Carbon fixation in photosynthetic organisms](#) [Metabolic pathways](#)
[Pentose and glucuronate interconversions](#) [Pentose phosphate pathway](#)

[服務條款](#) | [隱私權政策](#) | [著作及商標](#) | [網站地圖](#)

©2016 亞諾法生技股份有限公司 Abnova Corporation. 版權所有.