



# SZABO SCANDIC

Part of Europa Biosite

## Produktinformation



Forschungsprodukte & Biochemikalien



Zellkultur & Verbrauchsmaterial



Diagnostik & molekulare Diagnostik



Laborgeräte & Service

Weitere Information auf den folgenden Seiten!  
See the following pages for more information!



### Lieferung & Zahlungsart

siehe unsere [Liefer- und Versandbedingungen](#)

### Zuschläge

- Mindermengenzuschlag
- Trockeneiszuschlag
- Gefahrgutzuschlag
- Expressversand

### SZABO-SCANDIC HandelsgmbH

Quellenstraße 110, A-1100 Wien

T. +43(0)1 489 3961-0

F. +43(0)1 489 3961-7

[mail@szabo-scandic.com](mailto:mail@szabo-scandic.com)

[www.szabo-scandic.com](http://www.szabo-scandic.com)

[linkedin.com/company/szaboscandic](https://www.linkedin.com/company/szaboscandic) 



## RPE MaxPab mouse polyclonal antibody (B02) MaxPab®

Catalog # : H00006120-B02

規格 : [ 50 uL ]

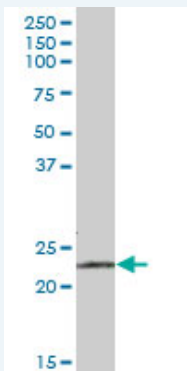
[List All](#)

### Specification

<b>Product Description:</b>	Mouse polyclonal antibody raised against a full-length human RPE protein.
<b>Immunogen:</b>	RPE (NP_954699.1, 1 a.a. ~ 228 a.a) full-length human protein.
<b>Sequence:</b>	MASGCKIGPSILNSDLANLGAELRMLD SGADYLHLDVMDGHFVPNITFG HPVVESLRKQLGQDPFFDMHMMVSKPEQWVKPMAVAGANQYTFHLEA TENPGALIKDIRENGMKVGLAIKPGTSVEYLAPWANQIDMALVMTVEPGF GGQKFMEDMMPKVHWLRTQFPSLDIEVDGGVGPDTVHKCAEAGANMIV SGSAIMRSEDP RSVINLLRNVCSEAAQKRSLDR
<b>Host:</b>	Mouse
<b>Reactivity:</b>	Human
<b>Quality Control Testing:</b>	Antibody reactive against mammalian transfected lysate.
<b>Storage Buffer:</b>	No additive
<b>Storage Instruction:</b>	Store at -20°C or lower. Aliquot to avoid repeated freezing and thawing.
<b>Note:</b>	For IHC and IF applications, antibody purification with Protein A will be needed prior to use.
<b>MSDS:</b>	 <a href="#">Download</a>
<b>Datasheet:</b>	 <a href="#">Download</a>

### Applications

#### Western Blot (Tissue lysate)



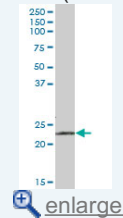
RPE MaxPab polyclonal antibody. Western Blot analysis of RPE expression in human liver.

 [Protocol Download](#)

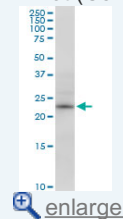
#### Western Blot (Cell lysate)

### Application Image

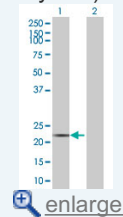
#### Western Blot (Tissue lysate)

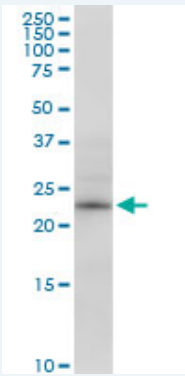


#### Western Blot (Cell lysate)



#### Western Blot (Transfected lysate)

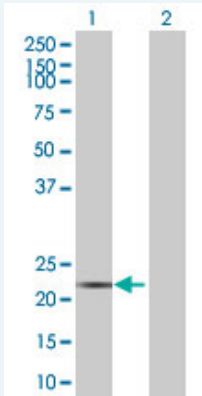




RPE MaxPab polyclonal antibody. Western Blot analysis of RPE expression in HepG2.

 [Protocol Download](#)

#### Western Blot (Transfected lysate)



Western Blot analysis of RPE expression in transfected 293T cell line ([H00006120-T02](#)) by RPE MaxPab polyclonal antibody.

Lane 1: RPE transfected lysate(25.08 KDa).

Lane 2: Non-transfected lysate.

 [Protocol Download](#)

#### Gene Information

Entrez GeneID: [6120](#)

GeneBank [NM\\_199229.1](#)

Accession#:

Protein [NP\\_954699.1](#)

Accession#:

Gene Name: RPE

Gene Alias: MGC2636,RPE2-1

Gene ribulose-5-phosphate-3-epimerase

Description:

Omim ID: [180480](#)

Gene Ontology: [Hyperlink](#)

Other OTTHUMP00000163939

Designations:

#### Gene Pathway

[Carbon fixation in photosynthetic organisms](#) [Metabolic pathways](#)  
[Pentose and glucuronate interconversions](#) [Pentose phosphate pathway](#)

---

---

[服務條款](#) | [隱私權政策](#) | [著作及商標](#) | [網站地圖](#)

©2016 亞諾法生技股份有限公司 Abnova Corporation. 版權所有.