



SZABO SCANDIC

Part of Europa Biosite

Produktinformation



Forschungsprodukte & Biochemikalien



Zellkultur & Verbrauchsmaterial



Diagnostik & molekulare Diagnostik



Laborgeräte & Service

Weitere Information auf den folgenden Seiten!
See the following pages for more information!



Lieferung & Zahlungsart

siehe unsere [Liefer- und Versandbedingungen](#)

Zuschläge

- Mindermengenzuschlag
- Trockeneiszuschlag
- Gefahrgutzuschlag
- Expressversand

SZABO-SCANDIC HandelsgmbH

Quellenstraße 110, A-1100 Wien

T. +43(0)1 489 3961-0

F. +43(0)1 489 3961-7

mail@szabo-scandic.com

www.szabo-scandic.com

[linkedin.com/company/szaboscandic](https://www.linkedin.com/company/szaboscandic) 

RPL3L polyclonal antibody (A01)

Catalog # : H00006123-A01

規格 : [50 uL]

List All

Specification

Product Description: Mouse polyclonal antibody raised against a partial recombinant RPL3L.

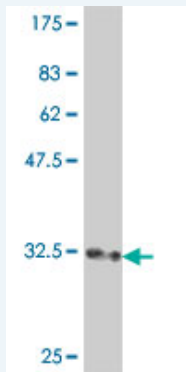
Immunogen: RPL3L (NP_005052, 280 a.a. ~ 360 a.a) partial recombinant protein with GST tag.

Sequence: LNKKIFRIGRGPHEMEDGKLVKNNASTSYDVTAKSITPLGGFPHYGEVNND
FVMLKGCIAGTKKRVTILRKSLLVHHSRQAV

Host: Mouse

Reactivity: Human

Quality Control Testing: Antibody Reactive Against Recombinant Protein.



Western Blot detection against Immunogen (35.02 KDa) .

Storage Buffer: 50 % glycerol

Storage Instruction: Store at -20°C or lower. Aliquot to avoid repeated freezing and thawing.

MSDS: [Download](#)

Datasheet: [Download](#)

Applications

Western Blot (Recombinant protein)

[Protocol Download](#)

ELISA

Gene Information

Entrez GeneID: [6123](#)

GeneBank Accession#: [NM_005061](#)

Application Image

Western Blot (Recombinant protein)

ELISA

Protein [NP_005052](#)

Accession#:

Gene Name: RPL3L

Gene Alias: -

Gene ribosomal protein L3-like

Description:

Gene Ontology: [Hyperlink](#)

Gene Summary: This gene encodes a protein that shares sequence similarity with ribosomal protein L3. The protein belongs to the L3P family of ribosomal proteins. Unlike the ubiquitous expression of ribosomal protein genes, this gene has a tissue-specific pattern of expression, with the highest levels of expression in skeletal muscle and heart. It is not currently known whether the encoded protein is a functional ribosomal protein or whether it has evolved a function that is independent of the ribosome. [provided by RefSeq]

Other 60S ribosomal protein L3-like

Designations:

Gene Pathway

[Ribosome](#)

[服務條款](#) | [隱私權政策](#) | [著作及商標](#) | [網站地圖](#)

©2016 亞諾法生技股份有限公司 Abnova Corporation. 版權所有.