



# SZABO SCANDIC

Part of Europa Biosite

## Produktinformation



Forschungsprodukte & Biochemikalien



Zellkultur & Verbrauchsmaterial



Diagnostik & molekulare Diagnostik



Laborgeräte & Service

Weitere Information auf den folgenden Seiten!  
See the following pages for more information!



### Lieferung & Zahlungsart

siehe unsere [Liefer- und Versandbedingungen](#)

### Zuschläge

- Mindermengenzuschlag
- Trockeneiszuschlag
- Gefahrgutzuschlag
- Expressversand

### SZABO-SCANDIC HandelsgmbH

Quellenstraße 110, A-1100 Wien

T. +43(0)1 489 3961-0

F. +43(0)1 489 3961-7

[mail@szabo-scandic.com](mailto:mail@szabo-scandic.com)

[www.szabo-scandic.com](http://www.szabo-scandic.com)

[linkedin.com/company/szaboscandic](https://www.linkedin.com/company/szaboscandic) 

## RPL4 purified MaxPab rabbit polyclonal antibody (D01P) MaxPab®

Catalog # : H00006124-D01P

規格 : [ 100 ug ]

[List All](#)

### Specification

**Product Description:** Rabbit polyclonal antibody raised against a full-length human RPL4 protein.

**Immunogen:** RPL4 (NP\_000959.2, 1 a.a. ~ 427 a.a) full-length human protein.

**Sequence:**  
 MACARPLISVYSEKGESSGKNVTLPAVFKAPIRPDMNFVHTNLRKNNRQP  
 YAVSELAGHQ TSAESWGTGRAVARIPRVGGGTHRSGQGAFGNMCRG  
 GRMFAPTKTWRRWHRRVNTTQKRYAICSALAASALPALVMSKGHRIEEV  
 PELPLVVEDKVEGYKKTKEAVLLLKCLKAWNDIKKYYASQRM RAGKGM  
 RNRRRIQRRGPCIYNEDNGIIFAFRNIPGITLLNVSKLNILKLAPGGHVGRF  
 CIWTESAFRKLDELGYTWRKAASLKSNYNLPMHKMINTDL SRILKSPEIQR  
 ALRAPRKKIHRRLV LKKNPLKNLRIMLKNLPYAKTMRRNTILRQARNHKL RV  
 DKAAAAAALQAKSDEKAAVAGKKPVVGGKGGKAAVGVKKQKKPLVGK  
 KAAATKKPAPEKKPAEKKPTTEEKPPAA

**Host:** Rabbit

**Reactivity:** Human

**Quality Control Testing:** Antibody reactive against mammalian transfected lysate.

**Storage Buffer:** In 1x PBS, pH 7.4

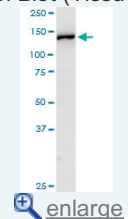
**Storage Instruction:** Store at -20°C or lower. Aliquot to avoid repeated freezing and thawing.

**MSDS:** [Download](#)

**Datasheet:** [Download](#)

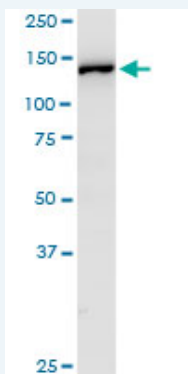
### Application Image

Western Blot (Tissue lysate)



### Applications

Western Blot (Tissue lysate)



RPL4 MaxPab rabbit polyclonal antibody. Western Blot analysis of RPL4 expression in human colon.

[Protocol Download](#)

### Gene Information

Entrez GeneID: [6124](#)

GeneBank  
Accession#: [NM\\_000968](#)

Protein  
Accession#: [NP\\_000959.2](#)

Gene Name: RPL4

Gene Alias: -

Gene  
Description: ribosomal protein L4

Omim ID: [180479](#)

Gene Ontology: [Hyperlink](#)

**Gene Summary:** Ribosomes, the organelles that catalyze protein synthesis, consist of a small 40S subunit and a large 60S subunit. Together these subunits are composed of 4 RNA species and approximately 80 structurally distinct proteins. This gene encodes a ribosomal protein that is a component of the 60S subunit. The protein belongs to the L4E family of ribosomal proteins. It is located in the cytoplasm. As is typical for genes encoding ribosomal proteins, there are multiple processed pseudogenes of this gene dispersed through the genome. [provided by RefSeq]

Other  
Designations: 60S ribosomal protein L4

#### Gene Pathway

[Ribosome](#)

[服務條款](#) | [隱私權政策](#) | [著作及商標](#) | [網站地圖](#)

©2016 亞諾法生技股份有限公司 Abnova Corporation. 版權所有.