



SZABO SCANDIC

Part of Europa Biosite

Produktinformation



Forschungsprodukte & Biochemikalien



Zellkultur & Verbrauchsmaterial



Diagnostik & molekulare Diagnostik



Laborgeräte & Service

Weitere Information auf den folgenden Seiten!
See the following pages for more information!



Lieferung & Zahlungsart

siehe unsere [Liefer- und Versandbedingungen](#)

Zuschläge

- Mindermengenzuschlag
- Trockeneiszuschlag
- Gefahrgutzuschlag
- Expressversand

SZABO-SCANDIC HandelsgmbH

Quellenstraße 110, A-1100 Wien

T. +43(0)1 489 3961-0

F. +43(0)1 489 3961-7

mail@szabo-scandic.com

www.szabo-scandic.com

[linkedin.com/company/szaboscandic](https://www.linkedin.com/company/szaboscandic) 

RPL4 monoclonal antibody (M01), clone 4A3

Catalog # : H00006124-M01

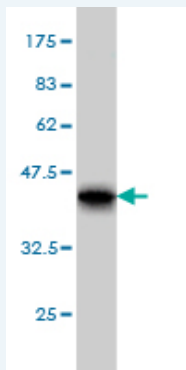
規格 : [100 ug]

[List All](#)

Specification

Product Description:	Mouse monoclonal antibody raised against a partial recombinant RPL4.
Immunogen:	RPL4 (NP_000959, 251 a.a. ~ 350 a.a) partial recombinant protein with GST tag. MW of the GST tag alone is 26 KDa.
Sequence:	IWTESAFRKLDELGYGTWRKAASLKSNNLPMHKMINTDLRILKSPEIQRALRAPRKKIHRRLVKKNPLKNLRIMLKNPYAKTMRRNTILRQARNHKLR
Host:	Mouse
Reactivity:	Human, Mouse, Rat
Isotype:	IgG2a Kappa

Quality Control Testing: Antibody Reactive Against Recombinant Protein.



Western Blot detection against Immunogen (36.74 KDa) .

Storage Buffer: In 1x PBS, pH 7.4

Storage Instruction: Store at -20°C or lower. Aliquot to avoid repeated freezing and thawing.

MSDS: [Download](#)

Datasheet: [Download](#)

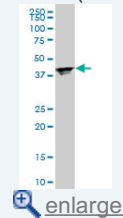
Publication Reference

- [Transmembrane and coiled-coil domain family 1 is a novel protein of the endoplasmic reticulum.](#)
Zhang C, Kho YS, Wang Z, Chiang YT, Ng GK, Shaw PC, Wang Y, Qi RZPLoS One. 2014 Jan 14;9(1):e85206. doi: 10.1371/journal.pone.0085206. eCollection 2014 Jan 14.
- [Shwachman-Bodian Diamond syndrome is a multi-functional protein implicated in cellular stress responses.](#)
Ball HL, Zhang B, Riches JJ, Gandhi R, Li J, Rommens JM, Myers JS. Hum Mol Genet. 2009 Oct 1;18(19):3684-95. Epub 2009 Jul 14.

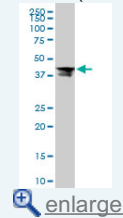
Applications

Application Image

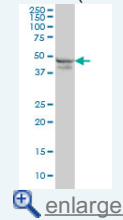
Western Blot (Cell lysate)



Western Blot (Cell lysate)

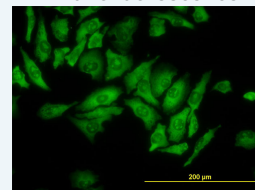


Western Blot (Cell lysate)

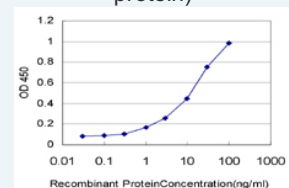


Western Blot (Recombinant protein)

Immunofluorescence

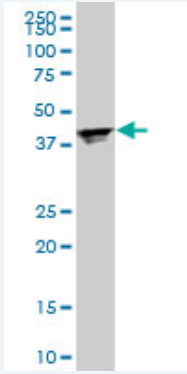


Sandwich ELISA (Recombinant protein)



ELISA

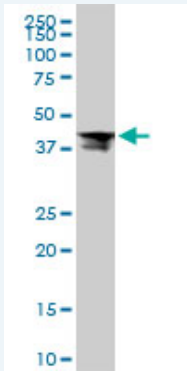
Western Blot (Cell lysate)



RPL4 monoclonal antibody (M01), clone 4A3. Western Blot analysis of RPL4 expression in PC-12 (Cat # L012V1).

 [Protocol Download](#)

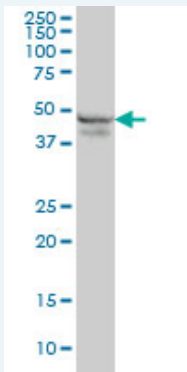
Western Blot (Cell lysate)



RPL4 monoclonal antibody (M01), clone 4A3. Western Blot analysis of RPL4 expression in Raw 264.7 (Cat # L024V1).

 [Protocol Download](#)

Western Blot (Cell lysate)



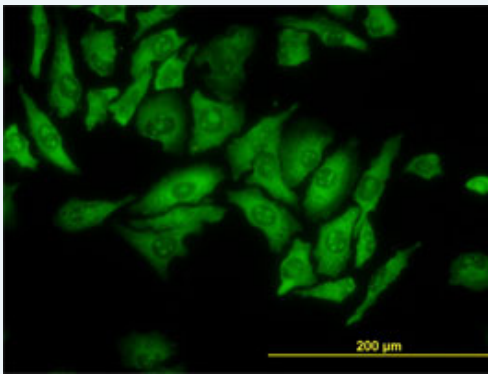
RPL4 monoclonal antibody (M01), clone 4A3 Western Blot analysis of RPL4 expression in K-562 (Cat # L009V1).

 [Protocol Download](#)

Western Blot (Recombinant protein)

 [Protocol Download](#)

Immunofluorescence

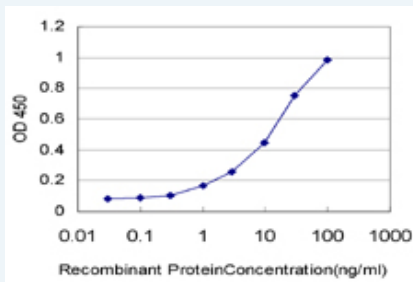


[enlarge this image](#)

Immunofluorescence of monoclonal antibody to RPL4 on HeLa cell. [antibody concentration 10 ug/ml]

[Protocol Download](#)

Sandwich ELISA (Recombinant protein)



Detection limit for recombinant GST tagged RPL4 is approximately 0.3ng/ml as a capture antibody.

[Protocol Download](#)

ELISA

Gene Information

Entrez GeneID: [6124](#)

GeneBank Accession#: [NM_000968](#)

Protein Accession#: [NP_000959](#)

Gene Name: RPL4

Gene Alias: -

Gene Description: ribosomal protein L4

Omim ID: [180479](#)

Gene Ontology: [Hyperlink](#)

Gene Summary: Ribosomes, the organelles that catalyze protein synthesis, consist of a small 40S subunit and a large 60S subunit. Together these subunits are composed of 4 RNA species and approximately 80 structurally distinct proteins. This gene encodes a ribosomal protein that is a component of the 60S subunit. The protein belongs to the L4E family of ribosomal proteins. It is located in the cytoplasm. As is typical for genes encoding ribosomal proteins, there are multiple processed pseudogenes of this gene dispersed through the genome. [provided by RefSeq]

Other Designations: 60S ribosomal protein L4

Gene Pathway

Ribosome

[服務條款](#) | [隱私權政策](#) | [著作及商標](#) | [網站地圖](#)

©2016 亞諾法生技股份有限公司 Abnova Corporation. 版權所有.