



# SZABO SCANDIC

Part of Europa Biosite

## Produktinformation



Forschungsprodukte & Biochemikalien



Zellkultur & Verbrauchsmaterial



Diagnostik & molekulare Diagnostik



Laborgeräte & Service

Weitere Information auf den folgenden Seiten!  
See the following pages for more information!



### Lieferung & Zahlungsart

siehe unsere [Liefer- und Versandbedingungen](#)

### Zuschläge

- Mindermengenzuschlag
- Trockeneiszuschlag
- Gefahrgutzuschlag
- Expressversand

### SZABO-SCANDIC HandelsgmbH

Quellenstraße 110, A-1100 Wien

T. +43(0)1 489 3961-0

F. +43(0)1 489 3961-7

[mail@szabo-scandic.com](mailto:mail@szabo-scandic.com)

[www.szabo-scandic.com](http://www.szabo-scandic.com)

[linkedin.com/company/szaboscandic](https://www.linkedin.com/company/szaboscandic) 



**RPL6 purified MaxPab mouse polyclonal antibody (B03P)** MaxPab®

Catalog # : H00006128-B03P

規格 : [ 50 ug ]

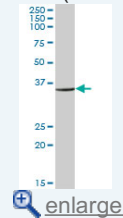
[List All](#)

**Specification**

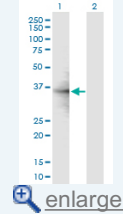
<b>Product Description:</b>	Mouse polyclonal antibody raised against a full-length human RPL6 protein.
<b>Immunogen:</b>	RPL6 (NP_000961.2, 1 a.a. ~ 288 a.a) full-length human protein.
<b>Sequence:</b>	MAGEKVEKPDTKEKKPEAKKVDAGGKVKKGNLAKKPKKGGKPHCSRNP VLVRGIGRYSRSAMYSRKAMYKRKYSAAKSKVEKKKKEKVLATVTKPVG GDKNGGTRVWKLKMPRYPTEDVPRKLLSHGKKPFQSHVRKLRSITP GTILILTGRHRGKR VFLKQLASGLLLVTGPLVLNRVPLRRTHQKFVIATS TKIDISNVKIPKHLTDAYFKKKLKRPRHQEGEIFDTEKEKYEITEQRKIDQK AVDSQILPKIKAIPQLQGYLRSVFALNNGIYPHKLVF
<b>Host:</b>	Mouse
<b>Reactivity:</b>	Human
<b>Quality Control Testing:</b>	Antibody reactive against mammalian transfected lysate.
<b>Storage Buffer:</b>	In 1x PBS, pH 7.4
<b>Storage Instruction:</b>	Store at -20°C or lower. Aliquot to avoid repeated freezing and thawing.
<b>MSDS:</b>	 <a href="#">Download</a>
<b>Datasheet:</b>	 <a href="#">Download</a>

**Application Image**

Western Blot (Tissue lysate)

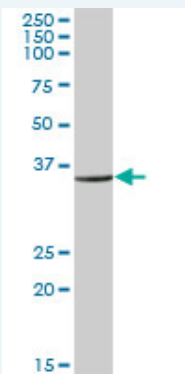


Western Blot (Transfected lysate)



**Applications**

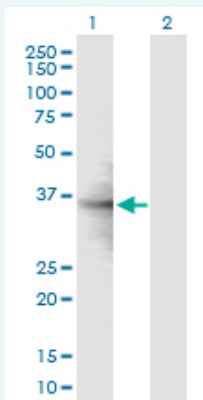
Western Blot (Tissue lysate)



RPL6 MaxPab polyclonal antibody. Western Blot analysis of RPL6 expression in human placenta.

 [Protocol Download](#)


Western Blot (Transfected lysate)



Western Blot analysis of RPL6 expression in transfected 293T cell line ([H00006128-T02](#)) by RPL6 MaxPab polyclonal antibody.

Lane 1: RPL6 transfected lysate(31.68 KDa).

Lane 2: Non-transfected lysate.

 [Protocol Download](#)

## Gene Information

**Entrez GeneID:** [6128](#)

**GeneBank** [NM\\_000970.3](#)

**Accession#:**

**Protein** [NP\\_000961.2](#)

**Accession#:**

**Gene Name:** RPL6

**Gene Alias:** SHUJUN-2, TAXREB107, TXREB1

**Gene** ribosomal protein L6

**Description:**

**Omim ID:** [603703](#)

**Gene Ontology:** [Hyperlink](#)

**Gene Summary:** Ribosomes, the organelles that catalyze protein synthesis, consist of a small 40S subunit and a large 60S subunit. Together these subunits are composed of 4 RNA species and approximately 80 structurally distinct proteins. This gene encodes a ribosomal protein that is a component of the 60S subunit. The protein belongs to the L6E family of ribosomal proteins. It is located in the cytoplasm. The protein can bind specifically to domain C of the tax-responsive enhancer element of human T-cell leukemia virus type 1, and it has been suggested that the protein may participate in tax-mediated transactivation of transcription. As is typical for genes encoding ribosomal proteins, there are multiple processed pseudogenes of this gene dispersed through the genome. Two alternatively spliced transcript variants encoding the same protein have been found for this gene. [provided by RefSeq]

**Other Designations:** 60S ribosomal protein L6, DNA-binding protein TAXREB107, neoplasm-related protein C140, tax-responsive enhancer element-binding protein 107

## Gene Pathway

[Ribosome](#)

