



SZABO SCANDIC

Part of Europa Biosite

Produktinformation



Forschungsprodukte & Biochemikalien



Zellkultur & Verbrauchsmaterial



Diagnostik & molekulare Diagnostik



Laborgeräte & Service

Weitere Information auf den folgenden Seiten!
See the following pages for more information!



Lieferung & Zahlungsart

siehe unsere [Liefer- und Versandbedingungen](#)

Zuschläge

- Mindermengenzuschlag
- Trockeneiszuschlag
- Gefahrgutzuschlag
- Expressversand

SZABO-SCANDIC HandelsgmbH

Quellenstraße 110, A-1100 Wien

T. +43(0)1 489 3961-0

F. +43(0)1 489 3961-7

mail@szabo-scandic.com

www.szabo-scandic.com

[linkedin.com/company/szaboscandic](https://www.linkedin.com/company/szaboscandic) 

RPL9 polyclonal antibody (A01)

Catalog # : H00006133-A01

規格 : [50 uL]

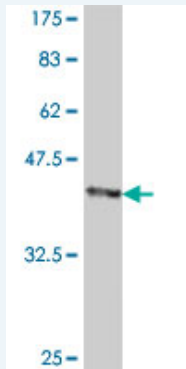
List All

Specification

Product Description:	Mouse polyclonal antibody raised against a full-length recombinant RPL9.
Immunogen:	RPL9 (AAH66318, 1 a.a. ~ 192 a.a) full-length recombinant protein with GST tag.
Sequence:	MKTILSNQTVDIPENVDITLKGRTVIVKGPRTLRRDFNHINVELSLLGKKK KRLRVDKWWGNRKELATVRTICSHVQNMIGVTLGFRYKMRSVYAHFPI NVVIQENGLSVEIRNFLGEKYIRRVMRPGVACSVSQAQKDELILEGNDIE LVSNSAALIQQATTVKNKDIRKFLDGIYSEKGTVQQADE
Host:	Mouse
Reactivity:	Human

Quality Control Antibody Reactive Against Recombinant Protein.

Testing:



Western Blot detection against Immunogen (47.23 kDa) .

Storage Buffer: 50 % glycerol


Storage Instruction: Store at -20°C or lower. Aliquot to avoid repeated freezing and thawing.

MSDS:  [Download](#)

Datasheet:  [Download](#)

Applications

Western Blot (Recombinant protein)

 [Protocol Download](#)

ELISA

Gene Information

Entrez GeneID: [6133](#)

GeneBank [BC066318](#)

Accession#:**Protein** [AAH66318](#)**Accession#:****Gene Name:** RPL9**Gene Alias:** DKFZp313J1510,FLJ27456,MGC15545,NPC-A-16**Gene** ribosomal protein L9**Description:****Omim ID:** [603686](#)**Gene Ontology:** [Hyperlink](#)

Gene Summary: Ribosomes, the organelles that catalyze protein synthesis, consist of a small 40S subunit and a large 60S subunit. Together these subunits are composed of 4 RNA species and approximately 80 structurally distinct proteins. This gene encodes a ribosomal protein that is a component of the 60S subunit. The protein belongs to the L6P family of ribosomal proteins. It is located in the cytoplasm. As is typical for genes encoding ribosomal proteins, there are multiple processed pseudogenes of this gene dispersed through the genome. Two alternatively spliced transcript variants encoding the same protein have been found for this gene. [provided by RefSeq]

Other 60S ribosomal protein L9,OTTHUMP00000125205**Designations:****Gene Pathway**[Ribosome](#)

[服務條款](#) | [隱私權政策](#) | [著作及商標](#) | [網站地圖](#)

©2016 亞諾法生技股份有限公司 Abnova Corporation. 版權所有.