



SZABO SCANDIC

Part of Europa Biosite

Produktinformation



Forschungsprodukte & Biochemikalien



Zellkultur & Verbrauchsmaterial



Diagnostik & molekulare Diagnostik



Laborgeräte & Service

Weitere Information auf den folgenden Seiten!
See the following pages for more information!



Lieferung & Zahlungsart

siehe unsere [Liefer- und Versandbedingungen](#)

Zuschläge

- Mindermengenzuschlag
- Trockeneiszuschlag
- Gefahrgutzuschlag
- Expressversand

SZABO-SCANDIC HandelsgmbH

Quellenstraße 110, A-1100 Wien

T. +43(0)1 489 3961-0

F. +43(0)1 489 3961-7

mail@szabo-scandic.com

www.szabo-scandic.com

[linkedin.com/company/szaboscandic](https://www.linkedin.com/company/szaboscandic) 

RPL11 monoclonal antibody (M04), clone 2A1

Catalog # : H00006135-M04

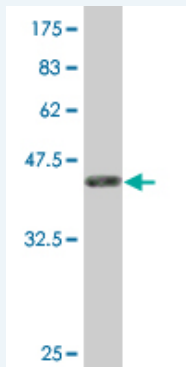
規格 : [100 ug]

[List All](#)

Specification

Product Description:	Mouse monoclonal antibody raised against a full-length recombinant RPL11.
Immunogen:	RPL11 (AAH18970, 1 a.a. ~ 177 a.a) full-length recombinant protein with GST tag. MW of the GST tag alone is 26 KDa.
Sequence:	MADQGEKENPMRELRIKRLCLNICVGESGDRLTRAAKVLQLTGQTPVF SKARYTVRSFGIRRNEKIAVHCTVRGAKAEILEKGLKVREYELRKNNFSD TGNFGFGIQEHIDLGIKYDPSIGYGLDFYVVLGRPGFSIADKKRRTGCIGA KHRISKEEAMRWFQQKYDGILPGK
Host:	Mouse
Reactivity:	Human
Isotype:	IgG2b Kappa

Quality Control Testing: Antibody Reactive Against Recombinant Protein.



Western Blot detection against Immunogen (45.21 KDa) .

Storage Buffer: In 1x PBS, pH 7.4

Storage Instruction: Store at -20°C or lower. Aliquot to avoid repeated freezing and thawing.

MSDS: [Download](#)

Datasheet: [Download](#)

Applications

Western Blot (Recombinant protein)

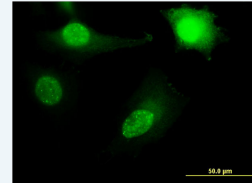
[Protocol Download](#)

Immunofluorescence

Application Image

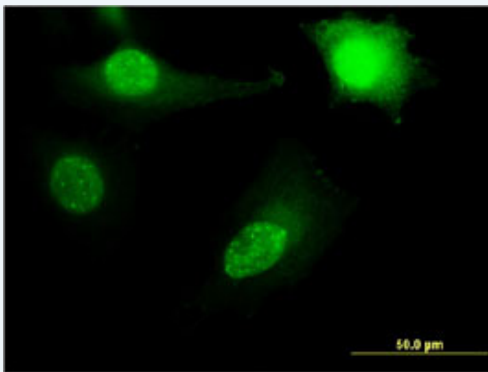
Western Blot (Recombinant protein)

Immunofluorescence



[enlarge](#)

ELISA



[enlarge this image](#)

Immunofluorescence of monoclonal antibody to RPL11 on HeLa cell . [antibody concentration 10 ug/ml]

 [Protocol Download](#)

ELISA

Gene Information

Entrez GeneID: [6135](#)

GeneBank Accession#: [BC018970](#)

Protein Accession#: [AAH18970](#)

Gene Name: RPL11

Gene Alias: GIG34

Gene Description: ribosomal protein L11

Omim ID: [604175](#)

Gene Ontology: [Hyperlink](#)

Gene Summary: Ribosomes, the organelles that catalyze protein synthesis, consist of a small 40S subunit and a large 60S subunit. Together these subunits are composed of 4 RNA species and approximately 80 structurally distinct proteins. This gene encodes a ribosomal protein that is a component of the 60S subunit. The protein belongs to the L5P family of ribosomal proteins. It is located in the cytoplasm. The protein probably associates with the 5S rRNA. Alternative splice variants encoding different isoforms may exist, but they have not been fully characterized. As is typical for genes encoding ribosomal proteins, there are multiple processed pseudogenes of this gene dispersed through the genome. [provided by RefSeq]

Other Designations: 60S ribosomal protein L11, CLL-associated antigen KW-12, OTTHUMP00000002956, cell growth-inhibiting protein 34

Gene Pathway

[Ribosome](#)

Related Disease

[Anemia, Diamond-Blackfan](#)

