



SZABO SCANDIC

Part of Europa Biosite

Produktinformation



Forschungsprodukte & Biochemikalien



Zellkultur & Verbrauchsmaterial



Diagnostik & molekulare Diagnostik



Laborgeräte & Service

Weitere Information auf den folgenden Seiten!
See the following pages for more information!



Lieferung & Zahlungsart

siehe unsere [Liefer- und Versandbedingungen](#)

Zuschläge

- Mindermengenzuschlag
- Trockeneiszuschlag
- Gefahrgutzuschlag
- Expressversand

SZABO-SCANDIC HandelsgmbH

Quellenstraße 110, A-1100 Wien

T. +43(0)1 489 3961-0

F. +43(0)1 489 3961-7

mail@szabo-scandic.com

www.szabo-scandic.com

[linkedin.com/company/szaboscandic](https://www.linkedin.com/company/szaboscandic) 

RPL15 polyclonal antibody (A01)

Catalog # : H00006138-A01

規格 : [50 uL]

List All

Specification

Product Description: Mouse polyclonal antibody raised against a partial recombinant RPL15.

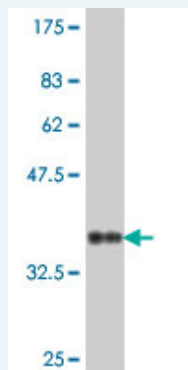
Immunogen: RPL15 (NP_002939, 105 a.a. ~ 203 a.a) partial recombinant protein with GST tag.

Sequence: RAGRHCALRVLNSYWVGEDSTYKFFEVILIDPFHKAIRRNPDQTQWITKP
VHKHREMRGLTSAGRKSRGLGKGHKFHHTIGGSRRRAAWRRRNTLQLHR
Y

Host: Mouse

Reactivity: Human

Quality Control Testing: Antibody Reactive Against Recombinant Protein.



Western Blot detection against Immunogen (37 KDa) .

Storage Buffer: 50 % glycerol

Storage Instruction: Store at -20°C or lower. Aliquot to avoid repeated freezing and thawing.

MSDS: [Download](#)

Datasheet: [Download](#)

Publication Reference

1. [A Novel Interaction Between Interferon-Inducible Protein p56 and Ribosomal Protein L15 in Gastric Cancer Cells.](#)
Hsu YA, Lin HJ, Sheu JJ, Shieh FK, Chen SY, Lai CH, Tsai FJ, Wan L, Chen BH. DNA Cell Biol. 2011 May 25. [Epub ahead of print]

Applications

Western Blot (Recombinant protein)

[Protocol Download](#)

ELISA

Application Image

Western Blot (Recombinant protein)

ELISA

Gene Information

Entrez GeneID: [6138](#)

**GeneBank
Accession#:** [NM_002948](#)

**Protein
Accession#:** [NP_002939](#)

Gene Name: RPL15

Gene Alias: EC45,FLJ26304,MGC88603,RPL10,RPLY10,RPYL10

**Gene
Description:** ribosomal protein L15

Omim ID: [604174](#)

Gene Ontology: [Hyperlink](#)

Gene Summary: Ribosomes, the organelles that catalyze protein synthesis, consist of a small 40S subunit and a large 60S subunit. Together these subunits are composed of 4 RNA species and approximately 80 structurally distinct proteins. This gene encodes a ribosomal protein that is a component of the 60S subunit. The protein belongs to the L15E family of ribosomal proteins. It is located in the cytoplasm. This gene shares sequence similarity with the yeast ribosomal protein YL10 gene. Although this gene has been referred to as RPL10, its official symbol is RPL15. This gene has been shown to be overexpressed in some esophageal tumors compared to normal matched tissues. Transcript variants utilizing alternative polyA signals exist. As is typical for genes encoding ribosomal proteins, there are multiple processed pseudogenes of this gene dispersed through the genome. [provided by RefSeq]

**Other
Designations:** 60S ribosomal protein
L15,OTTHUMP00000016039,OTTHUMP00000039257

Gene Pathway

[Ribosome](#)