



SZABO SCANDIC

Part of Europa Biosite

Produktinformation



Forschungsprodukte & Biochemikalien



Zellkultur & Verbrauchsmaterial



Diagnostik & molekulare Diagnostik



Laborgeräte & Service

Weitere Information auf den folgenden Seiten!
See the following pages for more information!



Lieferung & Zahlungsart

siehe unsere [Liefer- und Versandbedingungen](#)

Zuschläge

- Mindermengenzuschlag
- Trockeneiszuschlag
- Gefahrgutzuschlag
- Expressversand

SZABO-SCANDIC HandelsgmbH

Quellenstraße 110, A-1100 Wien

T. +43(0)1 489 3961-0

F. +43(0)1 489 3961-7

mail@szabo-scandic.com

www.szabo-scandic.com

[linkedin.com/company/szaboscandic](https://www.linkedin.com/company/szaboscandic) 



RPL15 purified MaxPab rabbit polyclonal antibody (D01P) MaxPab®

Catalog # : H00006138-D01P

規格 : [100 ug]

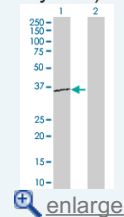
[List All](#)

Specification

Product Description:	Rabbit polyclonal antibody raised against a full-length human RPL15 protein.
Immunogen:	RPL15 (NP_002939.2, 1 a.a. ~ 204 a.a) full-length human protein.
Sequence:	MGAYKYIQELWRKKQSDVMRFLLRVRCWQYRQLSALHRAPRPTRPDK ARRLGYKAKQGYVIYRIRVRRGGRKRPVPGATYGKPVHHGVNQLKFAR SLQSVAEERAGRHCALRVLNSYWVGEDSTYKFFEVILIDPFHKAIRRN DTQWITKPVHKhREMRGLTSAGRKSRGLGKGHKFHHTIGGSRAAWRR RNTLQLHRYR
Host:	Rabbit
Reactivity:	Human
Quality Control Testing:	Antibody reactive against mammalian transfected lysate.
Storage Buffer:	In 1x PBS, pH 7.4
Storage Instruction:	Store at -20°C or lower. Aliquot to avoid repeated freezing and thawing.
MSDS:	 Download
Datasheet:	 Download

Application Image

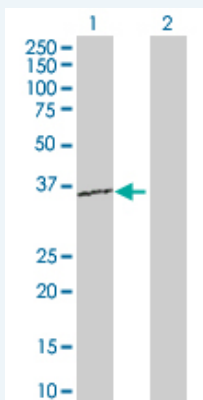
Western Blot (Transfected lysate)



 [enlarge](#)

Applications

Western Blot (Transfected lysate)



Western Blot analysis of RPL15 expression in transfected 293T cell line ([H00006138-T02](#)) by RPL15 MaxPab polyclonal antibody.

Lane 1: RPL15 transfected lysate(24.10 KDa).

Lane 2: Non-transfected lysate.

 [Protocol Download](#)

Gene Information

Entrez GeneID: [6138](#)

GeneBank [NM_002948.2](#)
Accession#:

Protein [NP_002939.2](#)
Accession#:

Gene Name: RPL15

Gene Alias: EC45,FLJ26304,MGC88603,RPL10,RPLY10,RPYL10

Gene Description: ribosomal protein L15

Omim ID: [604174](#)

Gene Ontology: [Hyperlink](#)

Gene Summary: Ribosomes, the organelles that catalyze protein synthesis, consist of a small 40S subunit and a large 60S subunit. Together these subunits are composed of 4 RNA species and approximately 80 structurally distinct proteins. This gene encodes a ribosomal protein that is a component of the 60S subunit. The protein belongs to the L15E family of ribosomal proteins. It is located in the cytoplasm. This gene shares sequence similarity with the yeast ribosomal protein YL10 gene. Although this gene has been referred to as RPL10, its official symbol is RPL15. This gene has been shown to be overexpressed in some esophageal tumors compared to normal matched tissues. Transcript variants utilizing alternative polyA signals exist. As is typical for genes encoding ribosomal proteins, there are multiple processed pseudogenes of this gene dispersed through the genome. [provided by RefSeq]

Other Designations: 60S ribosomal protein
L15,OTTHUMP00000016039,OTTHUMP00000039257

Gene Pathway

[Ribosome](#)