



SZABO SCANDIC

Part of Europa Biosite

Produktinformation



Forschungsprodukte & Biochemikalien



Zellkultur & Verbrauchsmaterial



Diagnostik & molekulare Diagnostik



Laborgeräte & Service

Weitere Information auf den folgenden Seiten!
See the following pages for more information!



Lieferung & Zahlungsart

siehe unsere [Liefer- und Versandbedingungen](#)

Zuschläge

- Mindermengenzuschlag
- Trockeneiszuschlag
- Gefahrgutzuschlag
- Expressversand

SZABO-SCANDIC HandelsgmbH

Quellenstraße 110, A-1100 Wien

T. +43(0)1 489 3961-0

F. +43(0)1 489 3961-7

mail@szabo-scandic.com

www.szabo-scandic.com

[linkedin.com/company/szaboscandic](https://www.linkedin.com/company/szaboscandic) 



RPL17 purified MaxPab rabbit polyclonal antibody (D01P) MaxPab®

Catalog # : H00006139-D01P

規格 : [100 ug]

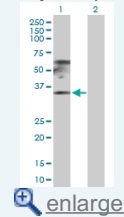
[List All](#)


Specification

| | |
|---------------------------------|---|
| Product Description: | Rabbit polyclonal antibody raised against a full-length human RPL17 protein. |
| Immunogen: | RPL17 (NP_000976.1, 1 a.a. ~ 184 a.a) full-length human protein. |
| Sequence: | MVRYSLDPENPTKSCKSRGSLRVHFKNTRETAQAIGMHIRKATKYLKD VTLQKQCVFRRYNGGVGRCAQAKQWGWTQGRWPKKSAEFLHMLK NAESNAELKGLDVDLSLVIEHIQVKNKAPKMRRTYRAHGRINPYMSSPCHIE MILTEKEQIVPKPEEEVAQKKKISQKLLKKQKLMARE |
| Host: | Rabbit |
| Reactivity: | Human |
| Quality Control Testing: | Antibody reactive against mammalian transfected lysate. |
| Storage Buffer: | In 1x PBS, pH 7.4 |
| Storage Instruction: | Store at -20°C or lower. Aliquot to avoid repeated freezing and thawing. |
| MSDS: |  Download |
| Datasheet: |  Download |

Application Image

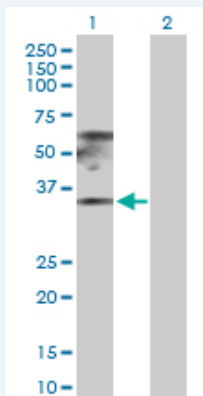
Western Blot (Transfected lysate)



 [enlarge](#)

Applications

Western Blot (Transfected lysate)



Western Blot analysis of RPL17 expression in transfected 293T cell line ([H00006139-T03](#)) by RPL17 MaxPab polyclonal antibody.

Lane 1: RPL17 transfected lysate(21.40 KDa).
Lane 2: Non-transfected lysate.

 [Protocol Download](#)

Gene Information

Entrez GeneID: [6139](#)

GeneBank Accession#: [NM_000985](#)

Protein Accession#: [NP_000976.1](#)

Gene Name: RPL17

Gene Alias: FLJ92089,MGC117162,rpL23

Gene Description: ribosomal protein L17

Omim ID: [603661](#)

Gene Ontology: [Hyperlink](#)

Gene Summary: Ribosomes, the organelles that catalyze protein synthesis, consist of a small 40S subunit and a large 60S subunit. Together these subunits are composed of 4 RNA species and approximately 80 structurally distinct proteins. This gene encodes a ribosomal protein that is a component of the 60S subunit. The protein belongs to the L22P family of ribosomal proteins. It is located in the cytoplasm. This gene has been referred to as rpL23 because the encoded protein shares amino acid identity with ribosomal protein L23 from *Halobacterium marismortui*; however, its official symbol is RPL17. Two alternative splice variants have been observed, each encoding the same protein. As is typical for genes encoding ribosomal proteins, there are multiple processed pseudogenes of this gene dispersed through the genome. [provided by RefSeq]

Other Designations: 60S ribosomal protein L17, gene encoding putative NFkB activating protein

Gene Pathway

[Ribosome](#)