



SZABO SCANDIC

Part of Europa Biosite

Produktinformation



Forschungsprodukte & Biochemikalien



Zellkultur & Verbrauchsmaterial



Diagnostik & molekulare Diagnostik



Laborgeräte & Service

Weitere Information auf den folgenden Seiten!
See the following pages for more information!



Lieferung & Zahlungsart

siehe unsere [Liefer- und Versandbedingungen](#)

Zuschläge

- Mindermengenzuschlag
- Trockeneiszuschlag
- Gefahrgutzuschlag
- Expressversand

SZABO-SCANDIC HandelsgmbH

Quellenstraße 110, A-1100 Wien

T. +43(0)1 489 3961-0

F. +43(0)1 489 3961-7

mail@szabo-scandic.com

www.szabo-scandic.com

[linkedin.com/company/szaboscandic](https://www.linkedin.com/company/szaboscandic) 



RPL17 monoclonal antibody (M01), clone 3G11

Catalog # : H00006139-M01

規格 : [100 ug]

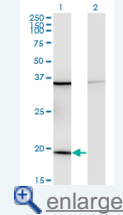
List All

Specification

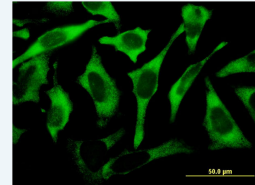
Product Description:	Mouse monoclonal antibody raised against a full-length recombinant RPL17.
Immunogen:	RPL17 (AAH00502, 1 a.a. ~ 184 a.a) full-length recombinant protein with GST tag. MW of the GST tag alone is 26 KDa.
Sequence:	MVRYSLDPEDPTKSCSKSRGSNLRVHFKNTRETAQAIGMHIRKATKYLK DVTLQKQCVPFRRYNGGVGRCAQAKQWGWTQGRWPKKSAEFLHML KNAESNAELKGLDVSLEVIHQVKNAPKVRRTYRAHGRINPYMSSPCHI EMILTEKEQIVPKPEEEVAQKKKISQKLLKKQKLMARE
Host:	Mouse
Reactivity:	Human
Isotype:	IgG2a Kappa
Quality Control Testing:	Antibody Reactive Against Recombinant Protein.
Storage Buffer:	In 1x PBS, pH 7.4
Storage Instruction:	Store at -20°C or lower. Aliquot to avoid repeated freezing and thawing.
MSDS:	 Download
Datasheet:	 Download

Application Image

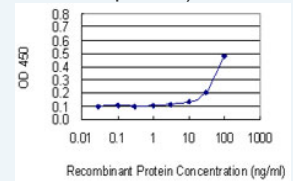
Western Blot (Transfected lysate)



Immunofluorescence



Sandwich ELISA (Recombinant protein)

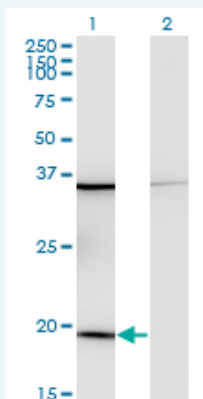


 enlarge

ELISA

Applications

Western Blot (Transfected lysate)



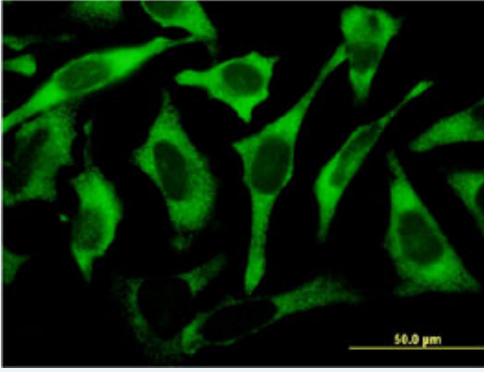
Western Blot analysis of RPL17 expression in transfected 293T cell line by RPL17 monoclonal antibody (M01), clone 3G11.

Lane 1: RPL17 transfected lysate(21.4 KDa).

Lane 2: Non-transfected lysate.

 [Protocol Download](#)

Immunofluorescence

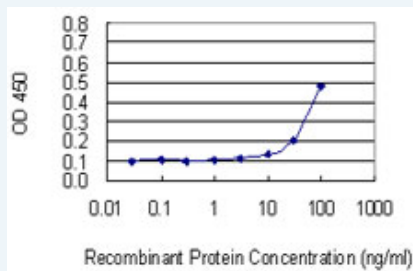


[enlarge this image](#)

Immunofluorescence of monoclonal antibody to RPL17 on HeLa cell . [antibody concentration 10 ug/ml]

[Protocol Download](#)

Sandwich ELISA (Recombinant protein)



Detection limit for recombinant GST tagged RPL17 is 3 ng/ml as a capture antibody.

[Protocol Download](#)

ELISA

Gene Information

Entrez GeneID: [6139](#)

GeneBank [BC000502](#)

Accession#:

Protein [AAH00502](#)

Accession#:

Gene Name: RPL17

Gene Alias: FLJ92089,MGC117162,rpL23

Gene ribosomal protein L17

Description:

Omim ID: [603661](#)

Gene Ontology: [Hyperlink](#)

Gene Summary: Ribosomes, the organelles that catalyze protein synthesis, consist of a small 40S subunit and a large 60S subunit. Together these subunits are composed of 4 RNA species and approximately 80 structurally distinct proteins. This gene encodes a ribosomal protein that is a component of the 60S subunit. The protein belongs to the L22P family of ribosomal proteins. It is located in the cytoplasm. This gene has been referred to as rpL23 because the encoded protein shares amino acid identity with ribosomal protein L23 from *Halobacterium marismortui*; however, its official symbol is RPL17. Two alternative splice variants have been observed, each encoding the same protein. As is typical for genes encoding ribosomal proteins, there are multiple processed pseudogenes of this gene dispersed through the genome. [provided by

RefSeq

Other Designations: 60S ribosomal protein L17, gene encoding putative NFkB activating protein

Gene Pathway

Ribosome

[服務條款](#) | [隱私權政策](#) | [著作及商標](#) | [網站地圖](#)

©2016 亞諾法生技股份有限公司 Abnova Corporation. 版權所有.