



SZABO SCANDIC

Part of Europa Biosite

Produktinformation



Forschungsprodukte & Biochemikalien



Zellkultur & Verbrauchsmaterial



Diagnostik & molekulare Diagnostik



Laborgeräte & Service

Weitere Information auf den folgenden Seiten!
See the following pages for more information!



Lieferung & Zahlungsart

siehe unsere [Liefer- und Versandbedingungen](#)

Zuschläge

- Mindermengenzuschlag
- Trockeneiszuschlag
- Gefahrgutzuschlag
- Expressversand

SZABO-SCANDIC HandelsgmbH

Quellenstraße 110, A-1100 Wien

T. +43(0)1 489 3961-0

F. +43(0)1 489 3961-7

mail@szabo-scandic.com

www.szabo-scandic.com

[linkedin.com/company/szaboscandic](https://www.linkedin.com/company/szaboscandic) 



RPL18 purified MaxPab rabbit polyclonal antibody (D01P) MaxPab®

Catalog # : H00006141-D01P

規格 : [100 ug]

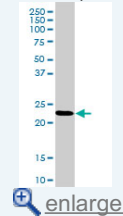
[List All](#)

Specification

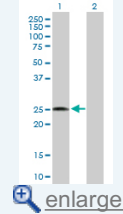
Product Description:	Rabbit polyclonal antibody raised against a full-length human RPL18 protein.
Immunogen:	RPL18 (NP_000970.1, 1 a.a. ~ 188 a.a) full-length human protein.
Sequence:	MGVDIRHNKDRKVRKPKSQDIYLRLLVKLYRFLARRTNSTFNQVWLKRLFMSRTNRPPLSLSRMIRKMKLPGRENKTAVVGTITDDVRVQEVPKLKVCALRVTSRARSRLRAGGKILTFDQLALDSPKGCCTVLLSGPRKGREVYRHF GKAPGTPHSHTKPYVRSKGRKFERARGRRASRGYKN
Host:	Rabbit
Reactivity:	Human
Quality Control Testing:	Antibody reactive against mammalian transfected lysate.
Storage Buffer:	In 1x PBS, pH 7.4
Storage Instruction:	Store at -20°C or lower. Aliquot to avoid repeated freezing and thawing.
MSDS:	 Download
Datasheet:	 Download

Application Image

Western Blot (Cell lysate)

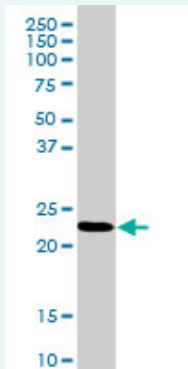


Western Blot (Transfected lysate)



Applications

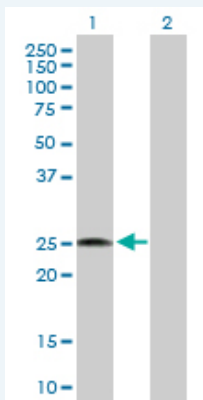
Western Blot (Cell lysate)



RPL18 MaxPab rabbit polyclonal antibody. Western Blot analysis of RPL18 expression in HepG2.

 [Protocol Download](#)


Western Blot (Transfected lysate)



Western Blot analysis of RPL18 expression in transfected 293T cell line ([H00006141-T02](#)) by RPL18 MaxPab polyclonal antibody.

Lane 1: RPL18 transfected lysate(21.60 KDa).

Lane 2: Non-transfected lysate.

 [Protocol Download](#)

Gene Information

Entrez GeneID: [6141](#)

GeneBank [NM_000979.2](#)

Accession#:

Protein [NP_000970.1](#)

Accession#:

Gene Name: RPL18

Gene Alias: -

Gene ribosomal protein L18

Description:

Omim ID: [604179](#)

Gene Ontology: [Hyperlink](#)

Gene Summary: Ribosomes, the organelles that catalyze protein synthesis, consist of a small 40S subunit and a large 60S subunit. Together these subunits are composed of 4 RNA species and approximately 80 structurally distinct proteins. This gene encodes a ribosomal protein that is a component of the 60S subunit. The protein belongs to the L18E family of ribosomal proteins. It is located in the cytoplasm. As is typical for genes encoding ribosomal proteins, there are multiple processed pseudogenes of this gene dispersed through the genome. [provided by RefSeq]

Other 60S ribosomal protein L18

Designations:

Gene Pathway

[Ribosome](#)

Related Disease

[Cardiovascular Diseases](#) [Diabetes Mellitus, Type 2](#) [Edema](#)