



SZABO SCANDIC

Part of Europa Biosite

Produktinformation



Forschungsprodukte & Biochemikalien



Zellkultur & Verbrauchsmaterial



Diagnostik & molekulare Diagnostik



Laborgeräte & Service

Weitere Information auf den folgenden Seiten!
See the following pages for more information!



Lieferung & Zahlungsart

siehe unsere [Liefer- und Versandbedingungen](#)

Zuschläge

- Mindermengenzuschlag
- Trockeneiszuschlag
- Gefahrgutzuschlag
- Expressversand

SZABO-SCANDIC HandelsgmbH

Quellenstraße 110, A-1100 Wien

T. +43(0)1 489 3961-0

F. +43(0)1 489 3961-7

mail@szabo-scandic.com

www.szabo-scandic.com

[linkedin.com/company/szaboscandic](https://www.linkedin.com/company/szaboscandic) 



RPL18A monoclonal antibody (M02), clone 3B7

Catalog # : H00006142-M02

規格 : [100 ug]

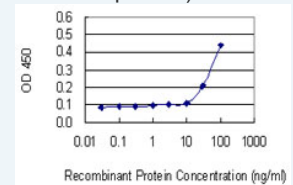
[List All](#)


Specification

Product Description:	Mouse monoclonal antibody raised against a partial recombinant RPL18A.
Immunogen:	RPL18A (NP_000971.1, 77 a.a. ~ 176 a.a) partial recombinant protein with GST tag. MW of the GST tag alone is 26 KDa.
Sequence:	NFGIWLRYDSRSGTHNMYREYRDLTTAGAVTQCYRDMGARHRARAHSI QIMKVEEIIAASKCRRPAVKQFHDSKIKFPLPHRVLRRQHKPRFTTKRPNT FF
Host:	Mouse
Reactivity:	Human
Isotype:	IgG2a Kappa
Quality Control Testing:	Antibody Reactive Against Recombinant Protein.
Storage Buffer:	In 1x PBS, pH 7.4
Storage Instruction:	Store at -20°C or lower. Aliquot to avoid repeated freezing and thawing.
MSDS:	 Download
Datasheet:	 Download

Application Image

Sandwich ELISA (Recombinant protein)

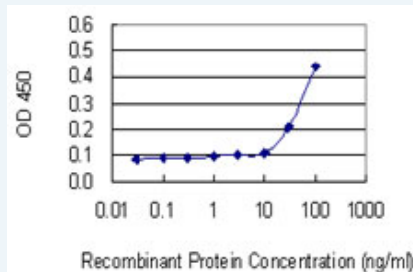


 [enlarge](#)


ELISA

Applications

Sandwich ELISA (Recombinant protein)



Detection limit for recombinant GST tagged RPL18A is 10 ng/ml as a capture antibody.

 [Protocol Download](#)

ELISA

Gene Information

Entrez GeneID: [6142](#)

GeneBank [NM_000980](#)
Accession#:

Protein Accession#: [NP_000971.1](#)

Gene Name: RPL18A

Gene Alias: -

Gene Description: ribosomal protein L18a

Omim ID: [604178](#)

Gene Ontology: [Hyperlink](#)

Gene Summary: Ribosomes, the organelles that catalyze protein synthesis, consist of a small 40S subunit and a large 60S subunit. Together these subunits are composed of 4 RNA species and approximately 80 structurally distinct proteins. This gene encodes a ribosomal protein that is a component of the 60S subunit. The protein belongs to the L18AE family of ribosomal proteins. It is located in the cytoplasm. This gene is co-transcribed with the U68 snoRNA, which is located in its third intron. As is typical for genes encoding ribosomal proteins, there are multiple processed pseudogenes of this gene dispersed through the genome. [provided by RefSeq]

Other Designations: 60S ribosomal protein L18a,ribosomal protein L18a-like protein

Gene Pathway

[Ribosome](#)

[服務條款](#) | [隱私權政策](#) | [著作及商標](#) | [網站地圖](#)

©2016 亞諾法生技股份有限公司 Abnova Corporation. 版權所有.