



SZABO SCANDIC

Part of Europa Biosite

Produktinformation



Forschungsprodukte & Biochemikalien



Zellkultur & Verbrauchsmaterial



Diagnostik & molekulare Diagnostik



Laborgeräte & Service

Weitere Information auf den folgenden Seiten!
See the following pages for more information!



Lieferung & Zahlungsart

siehe unsere [Liefer- und Versandbedingungen](#)

Zuschläge

- Mindermengenzuschlag
- Trockeneiszuschlag
- Gefahrgutzuschlag
- Expressversand

SZABO-SCANDIC HandelsgmbH

Quellenstraße 110, A-1100 Wien

T. +43(0)1 489 3961-0

F. +43(0)1 489 3961-7

mail@szabo-scandic.com

www.szabo-scandic.com

[linkedin.com/company/szaboscandic](https://www.linkedin.com/company/szaboscandic) 

RPL19 monoclonal antibody (M01), clone 3H4

Catalog # : H00006143-M01

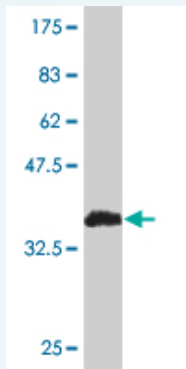
規格 : [100 ug]

List All

Specification

Product Description:	Mouse monoclonal antibody raised against a partial recombinant RPL19.
Immunogen:	RPL19 (NP_000972, 1 a.a. ~ 100 a.a) partial recombinant protein with GST tag. MW of the GST tag alone is 26 KDa.
Sequence:	MSMLRLQKRLASSVLRGKKKWWLDPNETNEIANANSRQQIRKLIKDGLII RKPVTVHSRARCCKNTLARRKGRHMGIGKRKGTANARMPEKVTWMRR MR
Host:	Mouse
Reactivity:	Human, Mouse, Rat
Isotype:	IgG2a Lambda

Quality Control Testing: Antibody Reactive Against Recombinant Protein.



Western Blot detection against Immunogen (36.74 KDa) .

Storage Buffer: In 1x PBS, pH 7.4

Storage Instruction: Store at -20°C or lower. Aliquot to avoid repeated freezing and thawing.

MSDS: [Download](#)

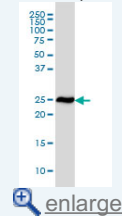
Datasheet: [Download](#)

Publication Reference

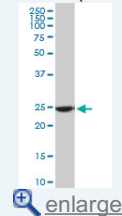
- [Inhibition of autophagy, lysosome and VCP function impairs stress granule assembly.](#) Seguin SJ, Morelli FF, Vinet J, Amore D, De Biasi S, Poletti A, Rubinsztein DC, Carra SCell Death Differ. 2014 Jul 18. doi: 10.1038/cdd.2014.103.
- [Substitution p.A350V in Na\(+\)/Mg\(2+\) Exchanger SLC41A1. Potentially Associated with Parkinson's Disease, Is a Gain-of-Function Mutation.](#) Kolisek M, Sponder G, Mastrototaro L, Smorodchenko A, Launay P, Vormann J, Schweigel-Rontgen M PLoS One. 2013 Aug 15;8(8):e71096. doi: 10.1371/journal.pone.0071096.
- [Identification and expression of an autosomal paralogue of ribosomal protein S4, X-](#)

Application Image

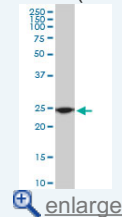
Western Blot (Cell lysate)



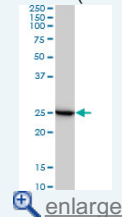
Western Blot (Cell lysate)



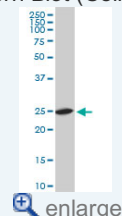
Western Blot (Cell lysate)



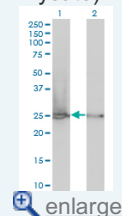
Western Blot (Cell lysate)



Western Blot (Cell lysate)



Western Blot (Transfected lysate)



Western Blot (Recombinant)

linked, in mice: Potential involvement of testis-specific ribosomal proteins in translation and spermatogenesis.

Sugihara Y, Sadohara E, Yonezawa K, Kugo M, Oshima K, Matsuda T, Nadano D. *Gene*. 2013 May 25;521(1):91-9. doi: 10.1016/j.gene. 2013.02.040

4. siRNA Knockdown of Ribosomal Protein Gene RPL19 Abrogates the Aggressive Phenotype of Human Prostate Cancer.

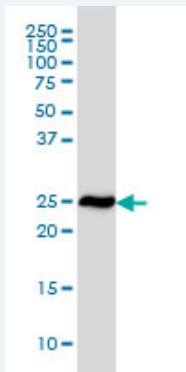
Bee A, Brewer D, Beesley C, Dodson A, Forootan S, Dickinson T, Gerard P, Lane B, Yao S, Cooper CS, Djamgoz MB, Gosden CM, Ke Y, Foster CS. *PLoS One*. 2011;6(7):e22672. Epub 2011 Jul 22.

5. A conserved SET-domain methyltransferase, Set11, modifies ribosomal protein Rpl12 in fission yeast.

Sadaie M, Shinmyozu K, Nakayama JI. *J Biol Chem*. 2008 Mar 14;283(11):7185-95. Epub 2008 Jan 14.

Applications

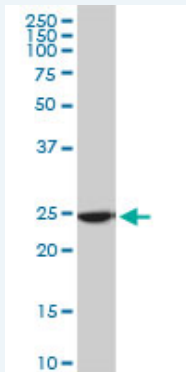
Western Blot (Cell lysate)



RPL19 monoclonal antibody (M01), clone 3H4 Western Blot analysis of RPL19 expression in HeLa (Cat # L013V1).

[Protocol Download](#)

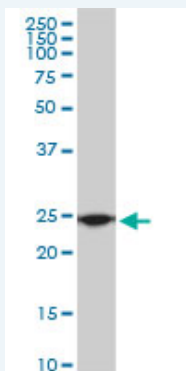
Western Blot (Cell lysate)



RPL19 monoclonal antibody (M01), clone 3H4. Western Blot analysis of RPL19 expression in PC-12 (Cat # L012V1).

[Protocol Download](#)

Western Blot (Cell lysate)

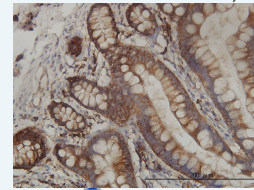


RPL19 monoclonal antibody (M01), clone 3H4. Western Blot analysis of RPL19 expression in Raw 264.7 (Cat # L024V1).

[Protocol Download](#)

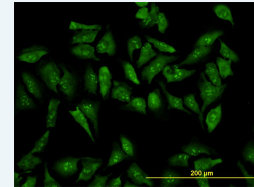
protein)

Immunohistochemistry
(Formalin/PFA-fixed paraffin-
embedded sections)



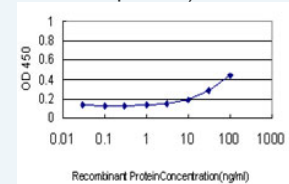
[enlarge](#)

Immunofluorescence



[enlarge](#)

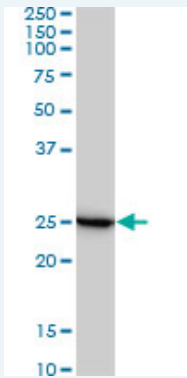
Sandwich ELISA (Recombinant
protein)



[enlarge](#)

ELISA

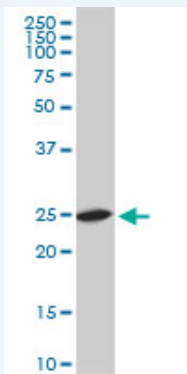
Western Blot (Cell lysate)



RPL19 monoclonal antibody (M01), clone 3H4. Western Blot analysis of RPL19 expression in Jurkat (Cat # L017V1).

 [Protocol Download](#)

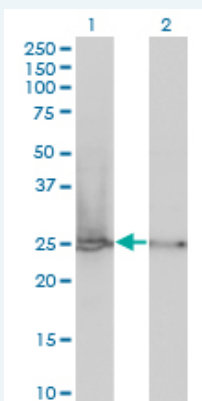
Western Blot (Cell lysate)



RPL19 monoclonal antibody (M01), clone 3H4. Western Blot analysis of RPL19 expression in NIH/3T3 (Cat # L018V1).

 [Protocol Download](#)

Western Blot (Transfected lysate)




Western Blot analysis of RPL19 expression in transfected 293T cell line by RPL19 monoclonal antibody (M01), clone 3H4.

Lane 1: RPL19 transfected lysate (Predicted MW: 23.5 KDa).

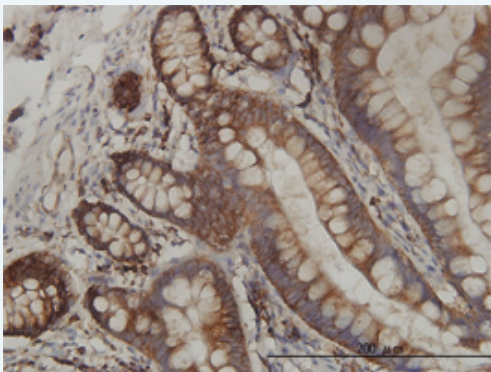
Lane 2: Non-transfected lysate.

 [Protocol Download](#)

Western Blot (Recombinant protein)

 [Protocol Download](#)

Immunohistochemistry (Formalin/PFA-fixed paraffin-embedded sections)

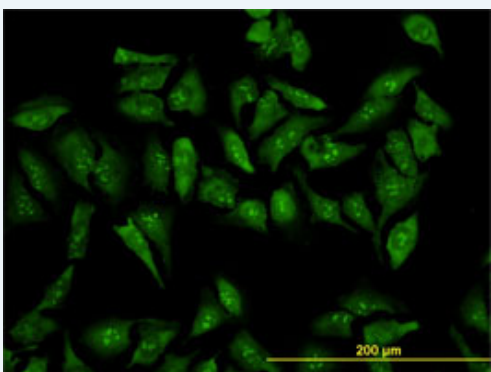


[enlarge this image](#)

Immunoperoxidase of monoclonal antibody to RPL19 on formalin-fixed paraffin-embedded human small Intestine tissue. [antibody concentration 1 ~ 10 ug/ml]

[Protocol Download](#)

Immunofluorescence

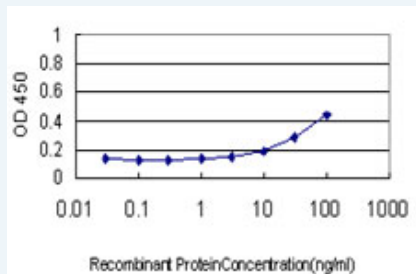


[enlarge this image](#)

Immunofluorescence of monoclonal antibody to RPL19 on HeLa cell. [antibody concentration 10 ug/ml]

[Protocol Download](#)

Sandwich ELISA (Recombinant protein)



Detection limit for recombinant GST tagged RPL19 is approximately 3ng/ml as a capture antibody.

[Protocol Download](#)

ELISA

Gene Information

Entrez GeneID: [6143](#)

GeneBank Accession#: [NM_000981](#)

Protein Accession#: [NP_000972](#)

Gene Name: RPL19

Gene Alias: DKFZp779D216,FLJ27452,MGC71997

Gene Description: ribosomal protein L19

Omim ID: [180466](#)

Gene Ontology: [Hyperlink](#)

Gene Summary: Ribosomes, the organelles that catalyze protein synthesis, consist of a small 40S subunit and a large 60S subunit. Together these subunits are composed of 4 RNA species and approximately 80 structurally distinct proteins. This gene encodes a ribosomal protein that is a component of the 60S subunit. The protein belongs to the L19E family of ribosomal proteins. It is located in the cytoplasm. As is typical for genes encoding ribosomal proteins, there are multiple processed pseudogenes of this gene dispersed through the genome. [provided by RefSeq]

Other Designations: 60S ribosomal protein L19, ribosomal protein L19, cytosolic, N-terminus truncated

Gene Pathway

[Ribosome](#)

[服務條款](#) | [隱私權政策](#) | [著作及商標](#) | [網站地圖](#)

©2016 亞諾法生技股份有限公司 Abnova Corporation. 版權所有.