



# SZABO SCANDIC

Part of Europa Biosite

## Produktinformation



Forschungsprodukte & Biochemikalien



Zellkultur & Verbrauchsmaterial



Diagnostik & molekulare Diagnostik



Laborgeräte & Service

Weitere Information auf den folgenden Seiten!  
See the following pages for more information!



### Lieferung & Zahlungsart

siehe unsere [Liefer- und Versandbedingungen](#)

### Zuschläge

- Mindermengenzuschlag
- Trockeneiszuschlag
- Gefahrgutzuschlag
- Expressversand

### SZABO-SCANDIC HandelsgmbH

Quellenstraße 110, A-1100 Wien

T. +43(0)1 489 3961-0

F. +43(0)1 489 3961-7

[mail@szabo-scandic.com](mailto:mail@szabo-scandic.com)

[www.szabo-scandic.com](http://www.szabo-scandic.com)

[linkedin.com/company/szaboscandic](https://www.linkedin.com/company/szaboscandic) 

## RPL21 polyclonal antibody (A01)

Catalog # : H00006144-A01

規格 : [ 50 uL ]

[List All](#)

### Specification

**Product Description:** Mouse polyclonal antibody raised against a partial recombinant RPL21.

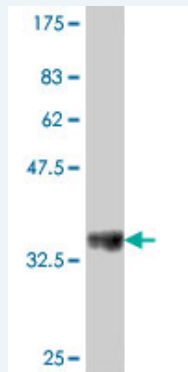
**Immunogen:** RPL21 (NP\_000973, 2 a.a. ~ 85 a.a) partial recombinant protein with GST tag.

**Sequence:** TNTKGKRRGTRYMF SRPFRKHGVVPLATYMR IYKKGDIVDIKMGTVQK  
GMPHKCYHGKTGRVYNVTQHAVGIVNKQVKGKIL

**Host:** Mouse

**Reactivity:** Human, Mouse

**Quality Control Testing:** Antibody Reactive Against Recombinant Protein.



Western Blot detection against Immunogen (35.35 KDa) .

**Storage Buffer:** 50 % glycerol

**Storage Instruction:** Store at -20°C or lower. Aliquot to avoid repeated freezing and thawing.

**MSDS:** [Download](#)

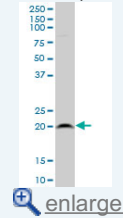
**Datasheet:** [Download](#)

### Applications

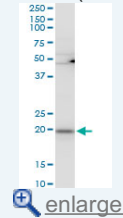
Western Blot (Cell lysate)

### Application Image

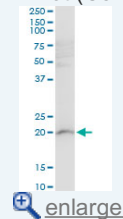
Western Blot (Cell lysate)



Western Blot (Cell lysate)

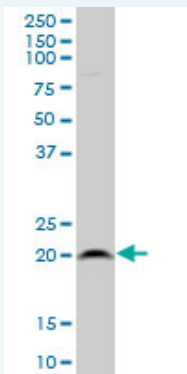


Western Blot (Cell lysate)



Western Blot (Recombinant protein)

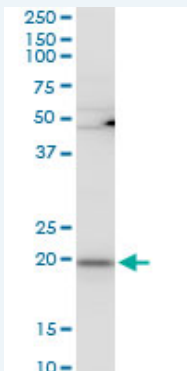
ELISA



RPL21 polyclonal antibody (A01), Lot # 051220JC01 Western Blot analysis of RPL21 expression in HepG2 ( Cat # L019V1 ).

 [Protocol Download](#)

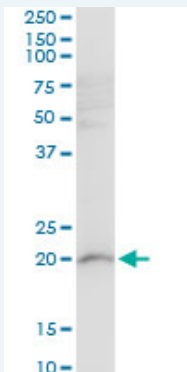
#### Western Blot (Cell lysate)



RPL21 polyclonal antibody (A01), Lot # 051220JC01. Western Blot analysis of RPL21 expression in Raw 264.7.

 [Protocol Download](#)


#### Western Blot (Cell lysate)



RPL21 polyclonal antibody (A01), Lot # 051220JC01. Western Blot analysis of RPL21 expression in NIH/3T3.

 [Protocol Download](#)

#### Western Blot (Recombinant protein)

 [Protocol Download](#)

#### ELISA

#### Gene Information

Entrez GeneID: [6144](#)

GeneBank [NM\\_000982](#)  
Accession#:

Protein [NP\\_000973](#)  
Accession#:

**Gene Name:** RPL21

**Gene Alias:** DKFZp686C06101,FLJ27458,L21,MGC104274,MGC104275,MGC71252

**Gene Description:** ribosomal protein L21

**Omim ID:** [603636](#)

**Gene Ontology:** [Hyperlink](#)

**Gene Summary:** Ribosomes, the organelles that catalyze protein synthesis, consist of a small 40S subunit and a large 60S subunit. Together these subunits are composed of 4 RNA species and approximately 80 structurally distinct proteins. This gene encodes a ribosomal protein that is a component of the 60S subunit. The protein belongs to the L21E family of ribosomal proteins. It is located in the cytoplasm. As is typical for genes encoding ribosomal proteins, there are multiple processed pseudogenes of this gene dispersed through the genome. [provided by RefSeq]

**Other Designations:** 60S ribosomal protein  
L21,OTTHUMP00000018163,OTTHUMP00000018164,OTTHUMP00000018165,OTTHUMP00000018166

### Gene Pathway

[Ribosome](#)

[服務條款](#) | [隱私權政策](#) | [著作及商標](#) | [網站地圖](#)

©2016 亞諾法生技股份有限公司 Abnova Corporation. 版權所有.