



# SZABO SCANDIC

Part of Europa Biosite

## Produktinformation



Forschungsprodukte & Biochemikalien



Zellkultur & Verbrauchsmaterial



Diagnostik & molekulare Diagnostik



Laborgeräte & Service

Weitere Information auf den folgenden Seiten!  
See the following pages for more information!



### Lieferung & Zahlungsart

siehe unsere [Liefer- und Versandbedingungen](#)

### Zuschläge

- Mindermengenzuschlag
- Trockeneiszuschlag
- Gefahrgutzuschlag
- Expressversand

### SZABO-SCANDIC HandelsgmbH

Quellenstraße 110, A-1100 Wien

T. +43(0)1 489 3961-0

F. +43(0)1 489 3961-7

[mail@szabo-scandic.com](mailto:mail@szabo-scandic.com)

[www.szabo-scandic.com](http://www.szabo-scandic.com)

[linkedin.com/company/szaboscandic](https://www.linkedin.com/company/szaboscandic) 



# RPL29 purified MaxPab mouse polyclonal antibody (B01P) MaxPab®

Catalog # : H00006159-B01P

規格 : [ 50 ug ]

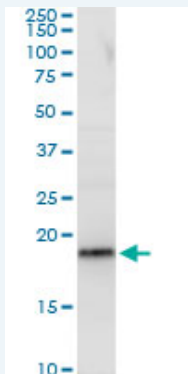
[List All](#)

## Specification

<b>Product Description:</b>	Mouse polyclonal antibody raised against a full-length human RPL29 protein.
<b>Immunogen:</b>	RPL29 (AAH08926, 1 a.a. ~ 159 a.a) full-length human protein.
<b>Sequence:</b>	MAKSKNHTTHNQSRKWHRNGIKKPRSQRYESLKGVDPKFLRNMRFAKK HNKKGLKKMQANNAKAMSARAEAIKALVKPKEVKPKIPKGVSRKLDRLAYI AHPKLGKRARARIAKGLRLCRPKAKAKAKAKDQTKAQAAAPASVPAQAP KRTQAPT KASE
<b>Host:</b>	Mouse
<b>Reactivity:</b>	Human
<b>Quality Control Testing:</b>	Antibody reactive against mammalian transfected lysate.
<b>Storage Buffer:</b>	In 1x PBS, pH 7.4
<b>Storage Instruction:</b>	Store at -20°C or lower. Aliquot to avoid repeated freezing and thawing.
<b>MSDS:</b>	 <a href="#">Download</a>
<b>Datasheet:</b>	 <a href="#">Download</a>

## Applications

### Western Blot (Tissue lysate)



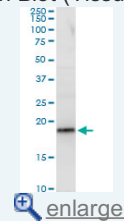
RPL29 MaxPab polyclonal antibody. Western Blot analysis of RPL29 expression in human pancreas.

 [Protocol Download](#)

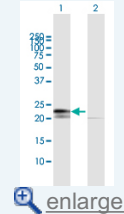
### Western Blot (Transfected lysate)

## Application Image

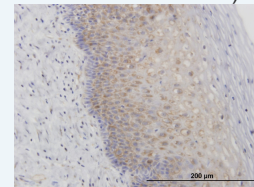
### Western Blot (Tissue lysate)



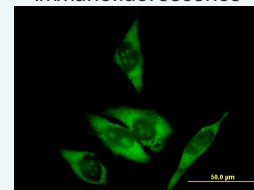
### Western Blot (Transfected lysate)

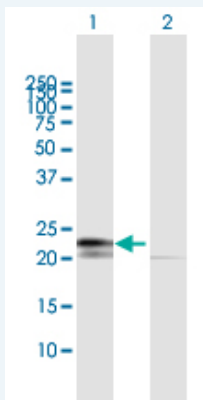


### Immunohistochemistry (Formalin/PFA-fixed paraffin-embedded sections)



### Immunofluorescence



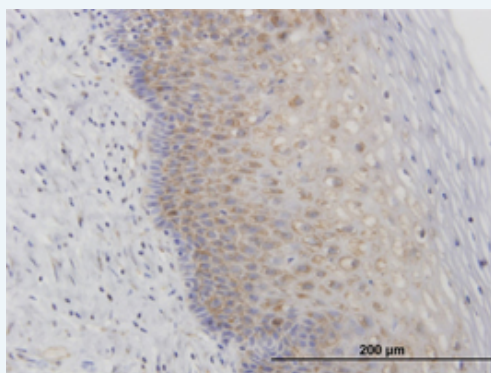


Western Blot analysis of RPL29 expression in transfected 293T cell line ([H00006159-T03](#)) by RPL29 MaxPab polyclonal antibody.

Lane 1: RPL29 transfected lysate(17.49 KDa).  
Lane 2: Non-transfected lysate.

[Protocol Download](#)

### Immunohistochemistry (Formalin/PFA-fixed paraffin-embedded sections)

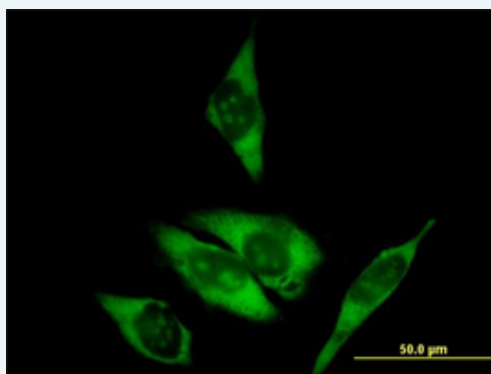


enlarge this image

Immunoperoxidase of purified MaxPab antibody to RPL29 on formalin-fixed paraffin-embedded human uterine cervix. [antibody concentration 3 ug/ml]

[Protocol Download](#)

### Immunofluorescence



enlarge this image

Immunofluorescence of purified MaxPab antibody to RPL29 on HeLa cell. [antibody concentration 10 ug/ml]

[Protocol Download](#)

### Gene Information

Entrez GeneID: [6159](#)

GeneBank [BC008926.1](#)  
Accession#:

Protein [AAH08926](#)  
Accession#:

Gene Name: RPL29

**Gene Alias:** HIP,HUMRPL29,MGC88589

**Gene** ribosomal protein L29

**Description:**

**Omim ID:** [601832](#)

**Gene Ontology:** [Hyperlink](#)

**Gene Summary:** Ribosomes, the organelles that catalyze protein synthesis, consist of a small 40S subunit and a large 60S subunit. Together these subunits are composed of 4 RNA species and approximately 80 structurally distinct proteins. This gene encodes a cytoplasmic ribosomal protein that is a component of the 60S subunit. The protein belongs to the L29E family of ribosomal proteins. The protein is also a peripheral membrane protein expressed on the cell surface that directly binds heparin. Although this gene was previously reported to map to 3q29-qter, it is believed that it is located at 3p21.3-p21.2. As is typical for genes encoding ribosomal proteins, there are multiple processed pseudogenes of this gene dispersed through the genome. [provided by RefSeq]

**Other Designations:** 60S ribosomal protein L29,HP/HS-interacting protein,OTTHUMP00000017090,cell surface heparin-binding protein HIP,heparin/heparan sulfate-binding protein,heparin/heparan sulfate-interacting protein

#### Gene Pathway

[Ribosome](#)

[服務條款](#) | [隱私權政策](#) | [著作及商標](#) | [網站地圖](#)

©2016 亞諾法生技股份有限公司 Abnova Corporation. 版權所有.