



SZABO SCANDIC

Part of Europa Biosite

Produktinformation



Forschungsprodukte & Biochemikalien



Zellkultur & Verbrauchsmaterial



Diagnostik & molekulare Diagnostik



Laborgeräte & Service

Weitere Information auf den folgenden Seiten!
See the following pages for more information!



Lieferung & Zahlungsart

siehe unsere [Liefer- und Versandbedingungen](#)

Zuschläge

- Mindermengenzuschlag
- Trockeneiszuschlag
- Gefahrgutzuschlag
- Expressversand

SZABO-SCANDIC HandelsgmbH

Quellenstraße 110, A-1100 Wien

T. +43(0)1 489 3961-0

F. +43(0)1 489 3961-7

mail@szabo-scandic.com

www.szabo-scandic.com

[linkedin.com/company/szaboscandic](https://www.linkedin.com/company/szaboscandic) 



RPL29 purified MaxPab mouse polyclonal antibody (B02P) MaxPab®

Catalog # : H00006159-B02P

規格 : [50 ug]

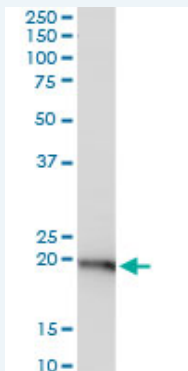
[List All](#)

Specification

Product Description:	Mouse polyclonal antibody raised against a full-length human RPL29 protein.
Immunogen:	RPL29 (NP_000983.1, 1 a.a. ~ 157 a.a) full-length human protein.
Sequence:	MAKSKNHTTHNQSRKWHRNGIKKPRSQRYESLKGVDPKFLRNMRFKK HNKKGLKQMANNKAMSARAEAIKALVKPKEVKPKIPKGVSRKLDRLAYI AHPKLGKRARARIAKGLRLCRPKAKAKAKDQTKAQAAAPASVPAQAPKR TQAPTQASE
Host:	Mouse
Reactivity:	Human
Quality Control Testing:	Antibody reactive against mammalian transfected lysate.
Storage Buffer:	In 1x PBS, pH 7.4
Storage Instruction:	Store at -20°C or lower. Aliquot to avoid repeated freezing and thawing.
MSDS:	 Download
Datasheet:	 Download

Applications

Western Blot (Tissue lysate)



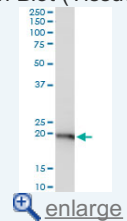
RPL29 MaxPab polyclonal antibody. Western Blot analysis of RPL29 expression in human pancreas.

 [Protocol Download](#)

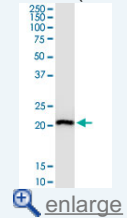
Western Blot (Cell lysate)

Application Image

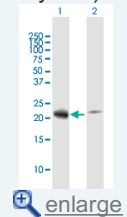
Western Blot (Tissue lysate)



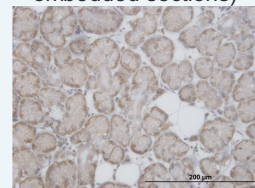
Western Blot (Cell lysate)




Western Blot (Transfected lysate)

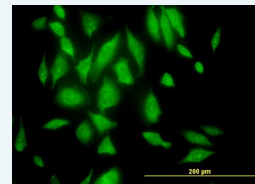


Immunohistochemistry (Formalin/PFA-fixed paraffin-embedded sections)

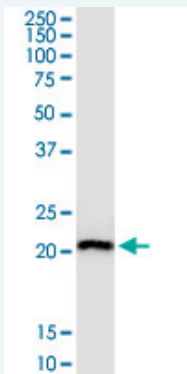


 [enlarge](#)

Immunofluorescence



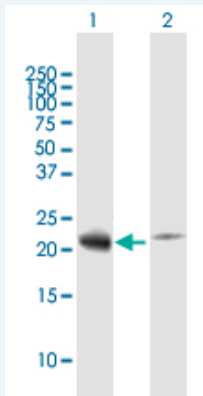
 [enlarge](#)



RPL29 MaxPab polyclonal antibody. Western Blot analysis of RPL29 expression in HeLa.

 [Protocol Download](#)

Western Blot (Transfected lysate)



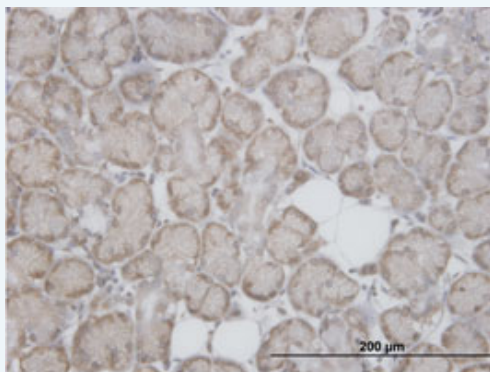
Western Blot analysis of RPL29 expression in transfected 293T cell line ([H00006159-T02](#)) by RPL29 MaxPab polyclonal antibody.


Lane 1: RPL29 transfected lysate(17.49 kDa).

Lane 2: Non-transfected lysate.

 [Protocol Download](#)

Immunohistochemistry (Formalin/PFA-fixed paraffin-embedded sections)

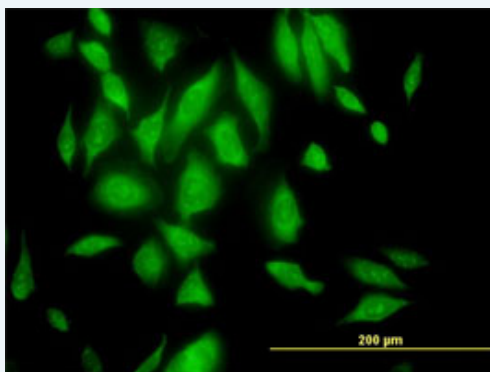



 [enlarge this image](#)

Immunoperoxidase of purified MaxPab antibody to RPL29 on formalin-fixed paraffin-embedded human salivary gland. [antibody concentration 3 ug/ml]


 [Protocol Download](#)

Immunofluorescence



 [enlarge this image](#)

Immunofluorescence of purified MaxPab antibody to RPL29 on HeLa cell. [antibody concentration 10 ug/ml]

 [Protocol Download](#)

Gene Information

Entrez GeneID: [6159](#)

**GeneBank
Accession#:** [NM_000992](#)

**Protein
Accession#:** [NP_000983.1](#)

Gene Name: RPL29

Gene Alias: HIP,HUMRPL29,MGC88589

**Gene
Description:** ribosomal protein L29

Omim ID: [601832](#)

Gene Ontology: [Hyperlink](#)

Gene Summary: Ribosomes, the organelles that catalyze protein synthesis, consist of a small 40S subunit and a large 60S subunit. Together these subunits are composed of 4 RNA species and approximately 80 structurally distinct proteins. This gene encodes a cytoplasmic ribosomal protein that is a component of the 60S subunit. The protein belongs to the L29E family of ribosomal proteins. The protein is also a peripheral membrane protein expressed on the cell surface that directly binds heparin. Although this gene was previously reported to map to 3q29-qter, it is believed that it is located at 3p21.3-p21.2. As is typical for genes encoding ribosomal proteins, there are multiple processed pseudogenes of this gene dispersed through the genome. [provided by RefSeq]

**Other
Designations:** 60S ribosomal protein L29,HP/HS-interacting protein,OTTHUMP00000017090,cell surface heparin-binding protein HIP,heparin/heparan sulfate-binding protein,heparin/heparan sulfate-interacting protein

Gene Pathway

[Ribosome](#)

[服務條款](#) | [隱私權政策](#) | [著作及商標](#) | [網站地圖](#)

©2016 亞諾法生技股份有限公司 Abnova Corporation. 版權所有.