



SZABO SCANDIC

Part of Europa Biosite

Produktinformation



Forschungsprodukte & Biochemikalien



Zellkultur & Verbrauchsmaterial



Diagnostik & molekulare Diagnostik



Laborgeräte & Service

Weitere Information auf den folgenden Seiten!
See the following pages for more information!



Lieferung & Zahlungsart

siehe unsere [Liefer- und Versandbedingungen](#)

Zuschläge

- Mindermengenzuschlag
- Trockeneiszuschlag
- Gefahrgutzuschlag
- Expressversand

SZABO-SCANDIC HandelsgmbH

Quellenstraße 110, A-1100 Wien

T. +43(0)1 489 3961-0

F. +43(0)1 489 3961-7

mail@szabo-scandic.com

www.szabo-scandic.com

[linkedin.com/company/szaboscandic](https://www.linkedin.com/company/szaboscandic) 

RPL37A polyclonal antibody (A01)

Catalog # : H00006168-A01

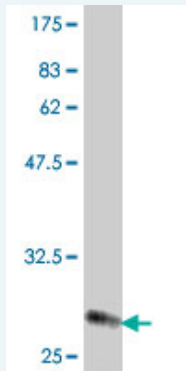
規格 : [50 uL]

List All

Specification

Product Description:	Mouse polyclonal antibody raised against a partial recombinant RPL37A.
Immunogen:	RPL37A (NP_000989, 2 a.a. ~ 50 a.a) partial recombinant protein with GST tag.
Sequence:	AKRTKKVGVGKYGTRYGASLRKMKVKKIEISQHAKYTCSECGKTKMKRR
Host:	Mouse
Reactivity:	Human

Quality Control Testing: Antibody Reactive Against Recombinant Protein.



Western Blot detection against Immunogen (31.5 KDa) .

Storage Buffer: 50 % glycerol

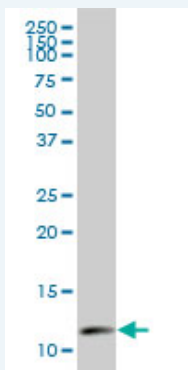
Storage Instruction: Store at -20°C or lower. Aliquot to avoid repeated freezing and thawing.

MSDS: [Download](#)

Datasheet: [Download](#)

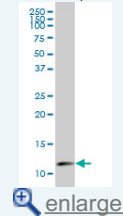
Applications

Western Blot (Cell lysate)



Application Image


Western Blot (Cell lysate)



Western Blot (Recombinant protein)

ELISA

RPL37A polyclonal antibody (A01), Lot # 051220JC01 Western Blot analysis of RPL37A expression in U-2 OS (Cat # L022V1).

 [Protocol Download](#)

Western Blot (Recombinant protein)

 [Protocol Download](#)

ELISA

Gene Information

Entrez GeneID: [6168](#)

GeneBank Accession#: [NM_000998](#)

Protein Accession#: [NP_000989](#)

Gene Name: RPL37A

Gene Alias: MGC74786

Gene Description: ribosomal protein L37a

Gene Ontology: [Hyperlink](#)

Gene Summary: Ribosomes, the organelles that catalyze protein synthesis, consist of a small 40S subunit and a large 60S subunit. Together these subunits are composed of 4 RNA species and approximately 80 structurally distinct proteins. This gene encodes a ribosomal protein that is a component of the 60S subunit. The protein belongs to the L37AE family of ribosomal proteins. It is located in the cytoplasm. The protein contains a C4-type zinc finger-like domain. As is typical for genes encoding ribosomal proteins, there are multiple processed pseudogenes of this gene dispersed through the genome. [provided by RefSeq]

Other Designations: 60S ribosomal protein L37a

Gene Pathway

[Ribosome](#)

[服務條款](#) | [隱私權政策](#) | [著作及商標](#) | [網站地圖](#)

©2016 亞諾法生技股份有限公司 Abnova Corporation. 版權所有.