



SZABO SCANDIC

Part of Europa Biosite

Produktinformation



Forschungsprodukte & Biochemikalien



Zellkultur & Verbrauchsmaterial



Diagnostik & molekulare Diagnostik



Laborgeräte & Service

Weitere Information auf den folgenden Seiten!
See the following pages for more information!



Lieferung & Zahlungsart

siehe unsere [Liefer- und Versandbedingungen](#)

Zuschläge

- Mindermengenzuschlag
- Trockeneiszuschlag
- Gefahrgutzuschlag
- Expressversand

SZABO-SCANDIC HandelsgmbH

Quellenstraße 110, A-1100 Wien

T. +43(0)1 489 3961-0

F. +43(0)1 489 3961-7

mail@szabo-scandic.com

www.szabo-scandic.com

[linkedin.com/company/szaboscandic](https://www.linkedin.com/company/szaboscandic) 

RPL36A monoclonal antibody (M02), clone 6H1

Catalog # : H00006173-M02

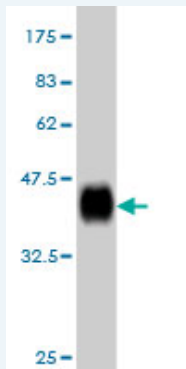
規格 : [100 ug]

[List All](#)

Specification

Product Description:	Mouse monoclonal antibody raised against a partial recombinant RPL36A.
Immunogen:	RPL36A (NP_066357, 7 a.a. ~ 106 a.a) partial recombinant protein with GST tag. MW of the GST tag alone is 26 KDa.
Sequence:	TRRTFCCKCGKHQPHKVTQYKKGKDSLYAQGKRRYDRKQSGYGGQTK PIFRKKAKTTKKIVLRLECVENCRSKRMLAIKRCKHFELGGDKKRKGQVI QF
Host:	Mouse
Reactivity:	Human, Mouse, Rat
Isotype:	IgG2a Kappa

Quality Control Testing: Antibody Reactive Against Recombinant Protein.



Western Blot detection against Immunogen (36.74 KDa) .

Storage Buffer: In 1x PBS, pH 7.4

Storage Instruction: Store at -20°C or lower. Aliquot to avoid repeated freezing and thawing.

MSDS: [Download](#)

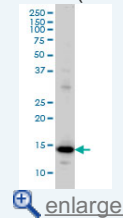
Datasheet: [Download](#)

Applications

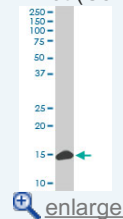
Western Blot (Cell lysate)

Application Image

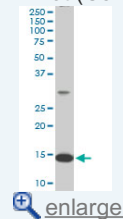
Western Blot (Cell lysate)



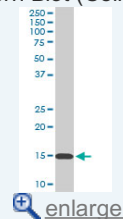
Western Blot (Cell lysate)



Western Blot (Cell lysate)

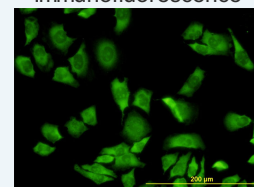


Western Blot (Cell lysate)

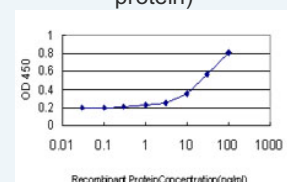


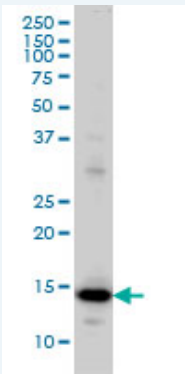
Western Blot (Recombinant protein)

Immunofluorescence



Sandwich ELISA (Recombinant protein)

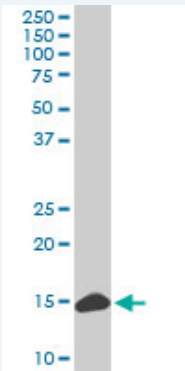




RPL36A monoclonal antibody (M02), clone 6H1 Western Blot analysis of RPL36A expression in HeLa (Cat # L013V1).

 [Protocol Download](#)

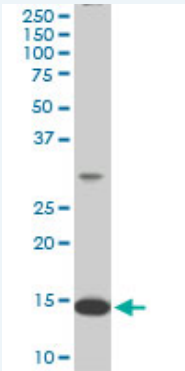
Western Blot (Cell lysate)



RPL36A monoclonal antibody (M02), clone 6H1. Western Blot analysis of RPL36A expression in PC-12 (Cat # L012V1).

 [Protocol Download](#)

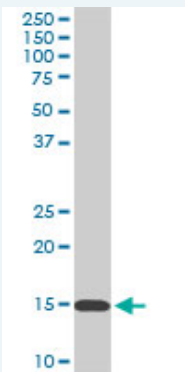
Western Blot (Cell lysate)




RPL36A monoclonal antibody (M02), clone 6H1. Western Blot analysis of RPL36A expression in Raw 264.7 (Cat # L024V1).

 [Protocol Download](#)

Western Blot (Cell lysate)



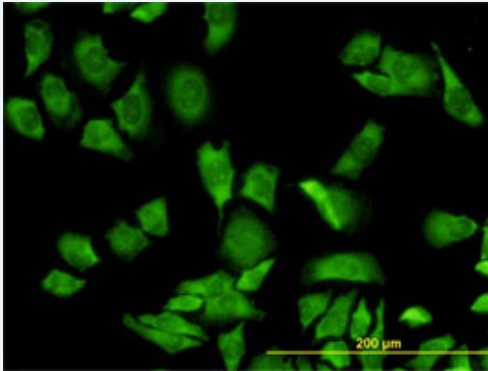
RPL36A monoclonal antibody (M02), clone 6H1. Western Blot analysis of RPL36A expression in NIH/3T3 (Cat # L018V1).


 [Protocol Download](#)

Western Blot (Recombinant protein)


 [Protocol Download](#)

Immunofluorescence

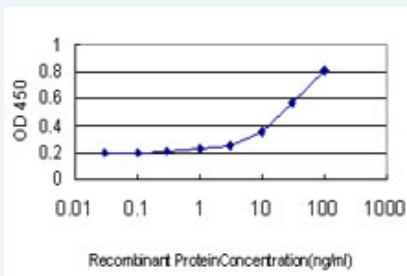


 [enlarge this image](#)


Immunofluorescence of monoclonal antibody to RPL36A on HeLa cell. [antibody concentration 10 ug/ml]

 [Protocol Download](#)

Sandwich ELISA (Recombinant protein)



Detection limit for recombinant GST tagged RPL36A is approximately 1ng/ml as a capture antibody.

 [Protocol Download](#)

ELISA

Gene Information

Entrez GeneID: [6173](#)

GeneBank Accession#: [NM_021029](#)

Protein Accession#: [NP_066357](#)

Gene Name: RPL36A

Gene Alias: L44L,MGC72020,MIG6,RPL44

Gene Description: ribosomal protein L36a

Gene Ontology: [Hyperlink](#)

Gene Summary: Cytoplasmic ribosomes, organelles that catalyze protein synthesis, consist of a small 40S subunit and a large 60S subunit. Together these subunits are composed of 4 RNA species and approximately 80 structurally distinct proteins. This gene encodes a ribosomal protein that is a component of the 60S subunit. The protein, which shares sequence similarity with yeast ribosomal protein L44, belongs to the L44E (L36AE) family of ribosomal proteins. Although this gene has been referred to as ribosomal protein L44 (RPL44), its official name is ribosomal protein

L36a (RPL36A). This gene and the human gene officially named ribosomal protein L36a-like (RPL36AL) encode nearly identical proteins; however, they are distinct genes. As is typical for genes encoding ribosomal proteins, there are multiple processed pseudogenes of this gene dispersed through the genome. [provided by RefSeq]

Other Designations: 60S ribosomal protein L36a,60S ribosomal protein L44,L44-like ribosomal protein,OTTHUMP0000023680,dJ164F3.3 (ribosomal protein L44),migration-inducing protein 6,ribosomal protein L36a homologue,ribosomal protein L44

Gene Pathway

[Ribosome](#)

[服務條款](#) | [隱私權政策](#) | [著作及商標](#) | [網站地圖](#)

©2016 亞諾法生技股份有限公司 Abnova Corporation. 版權所有.