



SZABO SCANDIC

Part of Europa Biosite

Produktinformation



Forschungsprodukte & Biochemikalien



Zellkultur & Verbrauchsmaterial



Diagnostik & molekulare Diagnostik



Laborgeräte & Service

Weitere Information auf den folgenden Seiten!
See the following pages for more information!



Lieferung & Zahlungsart

siehe unsere [Liefer- und Versandbedingungen](#)

Zuschläge

- Mindermengenzuschlag
- Trockeneiszuschlag
- Gefahrgutzuschlag
- Expressversand

SZABO-SCANDIC HandelsgmbH

Quellenstraße 110, A-1100 Wien

T. +43(0)1 489 3961-0

F. +43(0)1 489 3961-7

mail@szabo-scandic.com

www.szabo-scandic.com



[linkedin.com/company/szaboscandic](https://www.linkedin.com/company/szaboscandic) 

RPLP1 purified MaxPab mouse polyclonal antibody (B01P) MaxPab®

Catalog # : H00006176-B01P

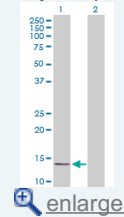
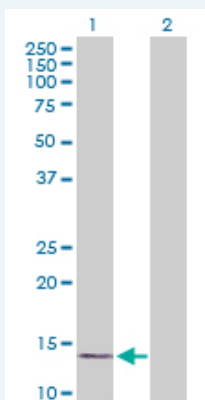
規格 : [50 ug]

[List All](#)
Specification

Product Description:	Mouse polyclonal antibody raised against a full-length human RPLP1 protein.
Immunogen:	RPLP1 (NP_000994.1, 1 a.a. ~ 114 a.a) full-length human protein.
Sequence:	MASVSELACIYSALILHDDEVTVTEDKINALIKAAGVNVEPFWPGLFAKALANVNIGSLICNVGAGGPAPAAGAAPAGGPAPSTAAAPAEKKVEAKKEESEESDDDMGFGFLFD
Host:	Mouse
Reactivity:	Human
Quality Control Testing:	Antibody reactive against mammalian transfected lysate.
Storage Buffer:	In 1x PBS, pH 7.4
Storage Instruction:	Store at -20°C or lower. Aliquot to avoid repeated freezing and thawing.
MSDS:	 Download
Datasheet:	 Download

Application Image

Western Blot (Transfected lysate)


Applications
Western Blot (Transfected lysate)


Western Blot analysis of RPLP1 expression in transfected 293T cell line ([H00006176-T01](#)) by RPLP1 MaxPab polyclonal antibody.

Lane 1: RPLP1 transfected lysate(12.54 kDa).
Lane 2: Non-transfected lysate.

 [Protocol Download](#)
Gene Information

Entrez GeneID: [6176](#)

GeneBank [NM_001003.2](#)
Accession#:

Protein [NP_000994.1](#)
Accession#:

Gene Name: RPLP1

Gene Alias: FLJ27448,MGC5215,P1,RPP1

Gene ribosomal protein, large, P1
Description:

Omim ID: [180520](#)

Gene Ontology: [Hyperlink](#)

Gene Summary: Ribosomes, the organelles that catalyze protein synthesis, consist of a small 40S subunit and a large 60S subunit. Together these subunits are composed of 4 RNA species and approximately 80 structurally distinct proteins. This gene encodes a ribosomal phosphoprotein that is a component of the 60S subunit. The protein, which is a functional equivalent of the E. coli L7/L12 ribosomal protein, belongs to the L12P family of ribosomal proteins. It plays an important role in the elongation step of protein synthesis. Unlike most ribosomal proteins, which are basic, the encoded protein is acidic. Its C-terminal end is nearly identical to the C-terminal ends of the ribosomal phosphoproteins P0 and P2. The P1 protein can interact with P0 and P2 to form a pentameric complex consisting of P1 and P2 dimers, and a P0 monomer. The protein is located in the cytoplasm. Two alternatively spliced transcript variants that encode different proteins have been observed. As is typical for genes encoding ribosomal proteins, there are multiple processed pseudogenes of this gene dispersed through the genome. [provided by RefSeq]

Other 60S acidic ribosomal protein P1,acidic ribosomal phosphoprotein
Designations: P1,ribosomal protein P1

Gene Pathway

[Ribosome](#)