



SZABO SCANDIC

Part of Europa Biosite

Produktinformation



Forschungsprodukte & Biochemikalien



Zellkultur & Verbrauchsmaterial



Diagnostik & molekulare Diagnostik



Laborgeräte & Service

Weitere Information auf den folgenden Seiten!
See the following pages for more information!



Lieferung & Zahlungsart

siehe unsere [Liefer- und Versandbedingungen](#)

Zuschläge

- Mindermengenzuschlag
- Trockeneiszuschlag
- Gefahrgutzuschlag
- Expressversand

SZABO-SCANDIC HandelsgmbH

Quellenstraße 110, A-1100 Wien

T. +43(0)1 489 3961-0

F. +43(0)1 489 3961-7

mail@szabo-scandic.com

www.szabo-scandic.com

[linkedin.com/company/szaboscandic](https://www.linkedin.com/company/szaboscandic) 

MRPL12 MaxPab mouse polyclonal antibody (B01) MaxPab®

Catalog # : H00006182-B01

規格 : [50 uL]

[List All](#)

Specification

Product Description: Mouse polyclonal antibody raised against a full-length human MRPL12 protein.

Immunogen: MRPL12 (NP_002940.2, 1 a.a. ~ 198 a.a) full-length human protein.

Sequence:
MLPAAARPLWGPCLGLRAAAFRLARRQVPCVCAVRHMRSSGHQRCEA
LAGAPLDNAPKEYPPKIQQLVQDIASLTLLLEISDLNELLKKTLLKIQDVGLVP
MGGVMSGAVPAAAAQEAVEEDIPIAKERTHFTVRLTEAKPVDKVKLIKEIK
NYIQGINLVQAKKLVESLPQEIKANVAKAEAEKIKAALEAVGGTVVLE

Host: Mouse

Reactivity: Human

Quality Control Testing: Antibody reactive against mammalian transfected lysate.

Storage Buffer: No additive

Storage Instruction: Store at -20°C or lower. Aliquot to avoid repeated freezing and thawing.

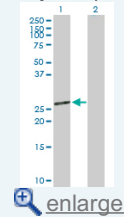
Note: For IHC and IF applications, antibody purification with Protein A will be needed prior to use.

MSDS:  [Download](#)

Datasheet:  [Download](#)

Application Image

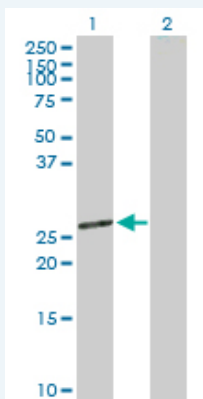
Western Blot (Transfected lysate)



 [enlarge](#)

Applications

Western Blot (Transfected lysate)



Western Blot analysis of MRPL12 expression in transfected 293T cell line (H00006182-T01) by MRPL12 MaxPab polyclonal antibody.

Lane 1: MRPL12 transfected lysate(21.30 KDa).

Lane 2: Non-transfected lysate.

 [Protocol Download](#)

Gene Information

Entrez GeneID: [6182](#)

GeneBank
Accession#: [NM_002949](#)

Protein
Accession#: [NP_002940.2](#)

Gene Name: MRPL12

Gene Alias: 5c5-2,FLJ60124,L12mt,MGC8610,MRP-L31/34,MRPL7,MRPL7/L12,RPML12

Gene
Description: mitochondrial ribosomal protein L12

Omim ID: [602375](#)

Gene Ontology: [Hyperlink](#)

Gene Summary: Mammalian mitochondrial ribosomal proteins are encoded by nuclear genes and help in protein synthesis within the mitochondrion. Mitochondrial ribosomes (mitoribosomes) consist of a small 28S subunit and a large 39S subunit. They have an estimated 75% protein to rRNA composition compared to prokaryotic ribosomes, where this ratio is reversed. Another difference between mammalian mitoribosomes and prokaryotic ribosomes is that the latter contain a 5S rRNA. Among different species, the proteins comprising the mitoribosome differ greatly in sequence, and sometimes in biochemical properties, which prevents easy recognition by sequence homology. This gene encodes a 39S subunit protein which forms homodimers. In prokaryotic ribosomes, two L7/L12 dimers and one L10 protein form the L8 protein complex. [provided by RefSeq]

Other
Designations: -

[服務條款](#) | [隱私權政策](#) | [著作及商標](#) | [網站地圖](#)

©2016 亞諾法生技股份有限公司 Abnova Corporation. 版權所有.