



SZABO SCANDIC

Part of Europa Biosite

Produktinformation



Forschungsprodukte & Biochemikalien



Zellkultur & Verbrauchsmaterial



Diagnostik & molekulare Diagnostik



Laborgeräte & Service

Weitere Information auf den folgenden Seiten!
See the following pages for more information!



Lieferung & Zahlungsart

siehe unsere [Liefer- und Versandbedingungen](#)

Zuschläge

- Mindermengenzuschlag
- Trockeneiszuschlag
- Gefahrgutzuschlag
- Expressversand

SZABO-SCANDIC HandelsgmbH

Quellenstraße 110, A-1100 Wien

T. +43(0)1 489 3961-0

F. +43(0)1 489 3961-7

mail@szabo-scandic.com

www.szabo-scandic.com

[linkedin.com/company/szaboscandic](https://www.linkedin.com/company/szaboscandic) 

MRPL12 purified MaxPab rabbit polyclonal antibody (D01P) MaxPab®

Catalog # : H00006182-D01P

規格 : [100 ug]

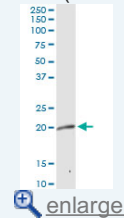
[List All](#)

Specification

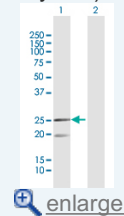
Product Description:	Rabbit polyclonal antibody raised against a full-length human MRPL12 protein.
Immunogen:	MRPL12 (NP_002940.2, 1 a.a. ~ 198 a.a) full-length human protein.
Sequence:	MLPAAARPLWGPCLGLRAAAFRLARRQVPCVCAVRHMRSSGHQRCEA LAGAPLDNAPKEYPPKIQQLVQDIASLTLLLEISDLNELLKKTLLKIQDVGLVP MGGVMSGAVPAAAAQEAVEEDIPIAKERTHFTVRLTEAKPVDKVKLIKEIK NYIQGINLVQAKKLVESLPQEIKANVAKAEAEKIKAALEAVGGTVVLE
Host:	Rabbit
Reactivity:	Human
Quality Control Testing:	Antibody reactive against mammalian transfected lysate.
Storage Buffer:	In 1x PBS, pH 7.4
Storage Instruction:	Store at -20°C or lower. Aliquot to avoid repeated freezing and thawing.
MSDS:	Download
Datasheet:	Download

Application Image

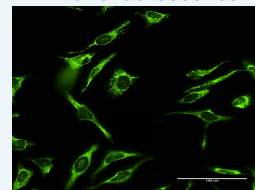
Western Blot (Tissue lysate)



Western Blot (Transfected lysate)

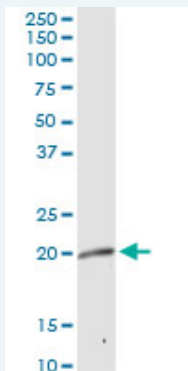


Immunofluorescence



Applications

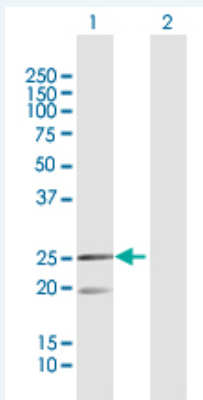
Western Blot (Tissue lysate)



MRPL12 MaxPab rabbit polyclonal antibody. Western Blot analysis of MRPL12 expression in human kidney.

[Protocol Download](#)

Western Blot (Transfected lysate)

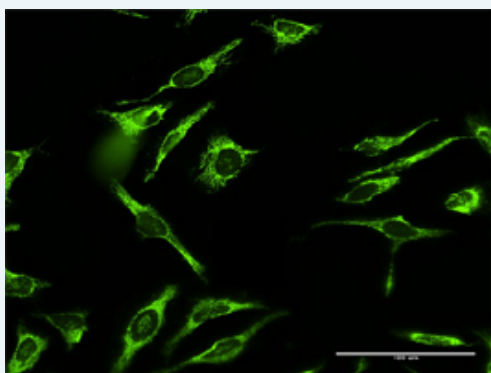


Western Blot analysis of MRPL12 expression in transfected 293T cell line ([H00006182-T02](#)) by MRPL12 MaxPab polyclonal antibody.

Lane 1: MRPL12 transfected lysate(21.30 KDa).
Lane 2: Non-transfected lysate.

[Protocol Download](#)

Immunofluorescence



enlarge this image

Immunofluorescence of purified MaxPab antibody to MRPL12 on HeLa cell. [antibody concentration 10 ug/ml]

[Protocol Download](#)

Gene Information

Entrez GeneID: [6182](#)

GeneBank [NM_002949](#)
Accession#:

Protein [NP_002940.2](#)
Accession#:

Gene Name: MRPL12

Gene Alias: 5c5-2,FLJ60124,L12mt,MGC8610,MRP-L31/34,MRPL7,MRPL7/L12,RPML12

Gene Description: mitochondrial ribosomal protein L12

Omim ID: [602375](#)

Gene Ontology: [Hyperlink](#)

Gene Summary: Mammalian mitochondrial ribosomal proteins are encoded by nuclear genes and help in protein synthesis within the mitochondrion. Mitochondrial ribosomes (mitoribosomes) consist of a small 28S subunit and a large 39S subunit. They have an estimated 75% protein to rRNA composition compared to prokaryotic ribosomes, where this ratio is reversed. Another difference between mammalian mitoribosomes and prokaryotic ribosomes is that the latter contain a 5S rRNA. Among

different species, the proteins comprising the mitoribosome differ greatly in sequence, and sometimes in biochemical properties, which prevents easy recognition by sequence homology. This gene encodes a 39S subunit protein which forms homodimers. In prokaryotic ribosomes, two L7/L12 dimers and one L10 protein form the L8 protein complex. [provided by RefSeq

Other -
Designations:

[服務條款](#) | [隱私權政策](#) | [著作及商標](#) | [網站地圖](#)

©2016 亞諾法生技股份有限公司 Abnova Corporation. 版權所有.