



# SZABO SCANDIC

Part of Europa Biosite

## Produktinformation



Forschungsprodukte & Biochemikalien



Zellkultur & Verbrauchsmaterial



Diagnostik & molekulare Diagnostik



Laborgeräte & Service

Weitere Information auf den folgenden Seiten!  
See the following pages for more information!



### Lieferung & Zahlungsart

siehe unsere [Liefer- und Versandbedingungen](#)

### Zuschläge

- Mindermengenzuschlag
- Trockeneiszuschlag
- Gefahrgutzuschlag
- Expressversand

### SZABO-SCANDIC HandelsgmbH

Quellenstraße 110, A-1100 Wien

T. +43(0)1 489 3961-0

F. +43(0)1 489 3961-7

[mail@szabo-scandic.com](mailto:mail@szabo-scandic.com)

[www.szabo-scandic.com](http://www.szabo-scandic.com)

[linkedin.com/company/szaboscandic](https://www.linkedin.com/company/szaboscandic) 

## MRPL12 monoclonal antibody (M01), clone 3B12-1A3

Catalog # : H00006182-M01

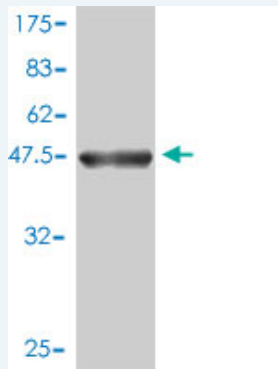
規格 : [ 100 ug ]

[List All](#)

### Specification

<b>Product Description:</b>	Mouse monoclonal antibody raised against a full length recombinant MRPL12.
<b>Immunogen:</b>	MRPL12 (AAH02344, 1 a.a. ~ 198 a.a) full-length recombinant protein with GST tag. MW of the GST tag alone is 26 KDa.
<b>Sequence:</b>	MLPAAARPLWGPCLGLRAAAFRLARRQVPCVCAVRHMRSSGHQRCEA LAGAPLDNAPKEYPPKIQQLVQDIASLTLEISDLNELLKKTLLKIQDVGLVP MGGVMSGAVPAAAAQEAVEEDIPIAKERTHFTVRLTEAKPVDKVKLIKEIK NYIQGINLVQAKKLVESLPQEIKANVAKAEAEKIKAAALEAVGGTVVLE
<b>Host:</b>	Mouse
<b>Reactivity:</b>	Human
<b>Isotype:</b>	IgG1 kappa

**Quality Control Testing:** Antibody Reactive Against Recombinant Protein.



Western Blot detection against Immunogen (47.52 KDa) .

**Storage Buffer:** In 1x PBS, pH 7.4

**Storage Instruction:** Store at -20°C or lower. Aliquot to avoid repeated freezing and thawing.

**MSDS:** [Download](#)

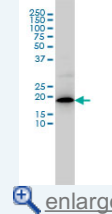
**Datasheet:** [Download](#)

### Publication Reference

- [A bifunctional protein regulates mitochondrial protein synthesis.](#)  
Richman TR, Davies SM, Shearwood AM, Ermer JA, Scott LH, Hibbs ME, Rackham O, Filipovska ANucleic Acids Res. 2014 Mar 5.
- [Oxygen Consumption Can Regulate the Growth of Tumors, a New Perspective on the Warburg Effect.](#)  
Chen Y, Cairns R, Papandreou I, Koong A, Denko NC.PLoS One. 2009 Sep 15;4(9):e7033.
- [Human mitochondrial ribosomal protein MRPL12 interacts directly with mitochondrial](#)

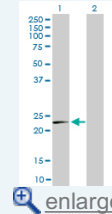
### Application Image

Western Blot (Cell lysate)



[enlarge](#)

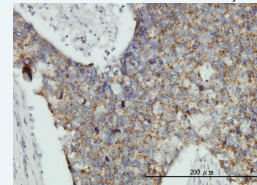
Western Blot (Transfected lysate)



[enlarge](#)

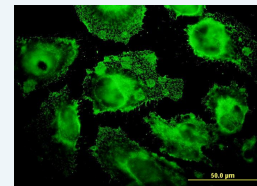
Western Blot (Recombinant protein)

Immunohistochemistry (Formalin/PFA-fixed paraffin-embedded sections)



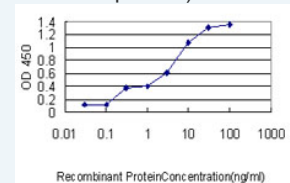
[enlarge](#)

Immunofluorescence



[enlarge](#)

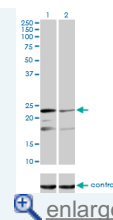
Sandwich ELISA (Recombinant protein)



[enlarge](#)

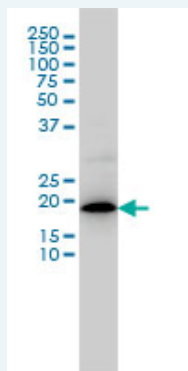
ELISA

RNAi Knockdown (Antibody validated)



## Applications

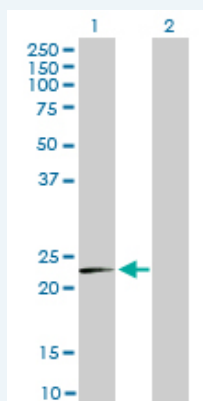
### Western Blot (Cell lysate)



MRPL12 monoclonal antibody (M01), clone 3B12-1A3 Western Blot analysis of MRPL12 expression in COLO 320 HSR ( Cat # L020V1 ).

 [Protocol Download](#)

### Western Blot (Transfected lysate)



Western Blot analysis of MRPL12 expression in transfected 293T cell line by MRPL12 monoclonal antibody (M01), clone 3B12-1A3.

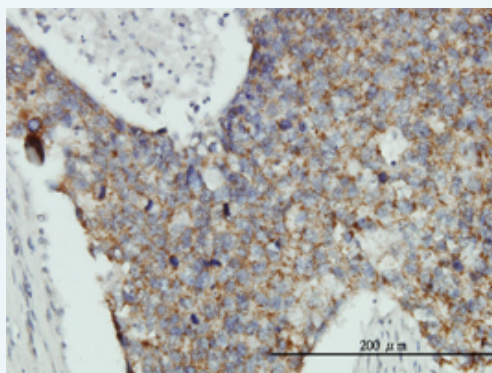
Lane 1: MRPL12 transfected lysate(21.3 kDa).  
Lane 2: Non-transfected lysate.

 [Protocol Download](#)

### Western Blot (Recombinant protein)

 [Protocol Download](#)

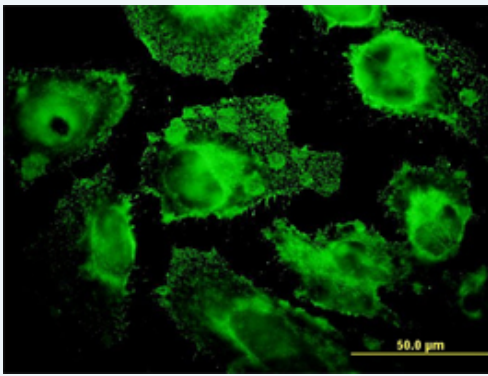
### Immunohistochemistry (Formalin/PFA-fixed paraffin-embedded sections)



Immunoperoxidase of monoclonal antibody to MRPL12 on formalin-fixed paraffin-embedded human breast cancer tissue. [antibody concentration 3 ug/ml]

 [Protocol Download](#)

### Immunofluorescence

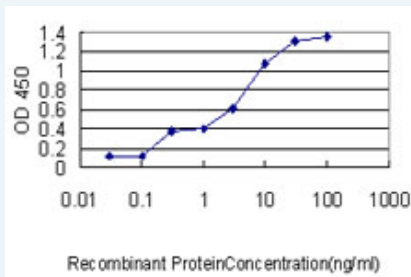


[enlarge this image](#)

Immunofluorescence of monoclonal antibody to MRPL12 on HeLa cell. [antibody concentration 10 ug/ml]

[Protocol Download](#)

### Sandwich ELISA (Recombinant protein)

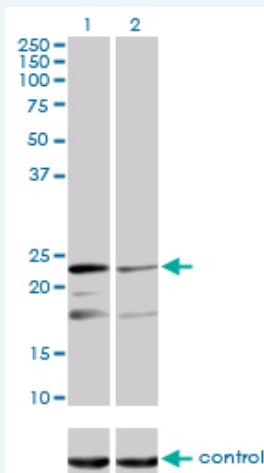


Detection limit for recombinant GST tagged MRPL12 is approximately 0.03ng/ml as a capture antibody.

[Protocol Download](#)

### ELISA

#### RNAi Knockdown (Antibody validated)



Western blot analysis of MRPL12 over-expressed 293 cell line, cotransfected with MRPL12 Validated Chimera RNAi ( Cat # H00006182-R01V ) (Lane 2) or non-transfected control (Lane 1). Blot probed with MRPL12 monoclonal antibody (M01), clone 3B12-1A3 (Cat # H00006182-M01 ). GAPDH ( 36.1 kDa ) used as specificity and loading control.

[Protocol Download](#)

### Gene Information

Entrez GeneID: [6182](#)

GeneBank [BC002344](#)

Accession#:

Protein [AAH02344](#)

Accession#:

Gene Name: MRPL12

**Gene Alias:** 5c5-2,FLJ60124,L12mt,MGC8610,MRP-L31/34,MRPL7,MRPL7/L12,RPML12

**Gene Description:** mitochondrial ribosomal protein L12

**Omim ID:** [602375](#)

**Gene Ontology:** [Hyperlink](#)

**Gene Summary:** Mammalian mitochondrial ribosomal proteins are encoded by nuclear genes and help in protein synthesis within the mitochondrion. Mitochondrial ribosomes (mitoribosomes) consist of a small 28S subunit and a large 39S subunit. They have an estimated 75% protein to rRNA composition compared to prokaryotic ribosomes, where this ratio is reversed. Another difference between mammalian mitoribosomes and prokaryotic ribosomes is that the latter contain a 5S rRNA. Among different species, the proteins comprising the mitoribosome differ greatly in sequence, and sometimes in biochemical properties, which prevents easy recognition by sequence homology. This gene encodes a 39S subunit protein which forms homodimers. In prokaryotic ribosomes, two L7/L12 dimers and one L10 protein form the L8 protein complex. [provided by RefSeq]

**Other Designations:** -

[服務條款](#) | [隱私權政策](#) | [著作及商標](#) | [網站地圖](#)

©2016 亞諾法生技股份有限公司 Abnova Corporation. 版權所有.