



# SZABO SCANDIC

Part of Europa Biosite

## Produktinformation



Forschungsprodukte & Biochemikalien



Zellkultur & Verbrauchsmaterial



Diagnostik & molekulare Diagnostik



Laborgeräte & Service

Weitere Information auf den folgenden Seiten!  
See the following pages for more information!



### Lieferung & Zahlungsart

siehe unsere [Liefer- und Versandbedingungen](#)

### Zuschläge

- Mindermengenzuschlag
- Trockeneiszuschlag
- Gefahrgutzuschlag
- Expressversand

### SZABO-SCANDIC HandelsgmbH

Quellenstraße 110, A-1100 Wien

T. +43(0)1 489 3961-0

F. +43(0)1 489 3961-7

[mail@szabo-scandic.com](mailto:mail@szabo-scandic.com)

[www.szabo-scandic.com](http://www.szabo-scandic.com)

[linkedin.com/company/szaboscandic](https://www.linkedin.com/company/szaboscandic) 

## RPN2 293T Cell Transient Overexpression Lysate(Denatured)

Catalog # : H00006185-T01

規格 : [ 100 uL ]

[List All](#)

### Specification

**Transfected Cell Line:** 293T

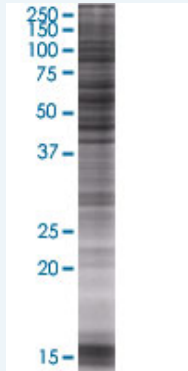
**Plasmid:** pCMV-RPN2 full-length

**Host:** Human

**Theoretical MW (kDa):** 69.52

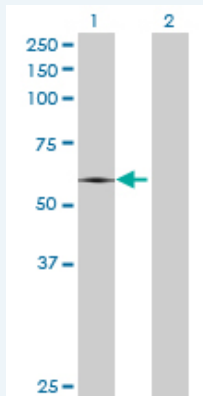
**Quality Control Testing:** Transient overexpression cell lysate was tested with Anti-RPN2 antibody (H00006185-B01) by Western Blots.

#### SDS-PAGE Gel



RPN2 transfected lysate.

#### Western Blot



Lane 1: RPN2 transfected lysate ( 69.52 KDa)

Lane 2: Non-transfected lysate.

**Storage Buffer:** 1X Sample Buffer (50 mM Tris-HCl, 2% SDS, 10% glycerol, 300 mM 2-mercaptoethanol, 0.01% Bromophenol blue)

**Storage Instruction:** Store at -80°C. Aliquot to avoid repeated freezing and thawing.

**MSDS:**  [Download](#)

### Applications

### Application Image

Western Blot

## Western Blot

### Gene Information

Entrez GeneID: [6185](#)

GeneBank [NM\\_002951.2](#)  
Accession#:

Protein [NP\\_002942.2](#)  
Accession#:

Gene Name: RPN2

Gene Alias: RIBIIR,RPN-II,RPNII,SWP1

Gene Description: ribophorin II

Omim ID: [180490](#)

Gene Ontology: [Hyperlink](#)

**Gene Summary:** This gene encodes a type I integral membrane protein found only in the rough endoplasmic reticulum. The encoded protein is part of an N-oligosaccharyl transferase complex that links high mannose oligosaccharides to asparagine residues found in the Asn-X-Ser/Thr consensus motif of nascent polypeptide chains. This protein is similar in sequence to the yeast oligosaccharyl transferase subunit SWP1. Alternatively spliced transcript variants encoding different isoforms have been found for this gene. [provided by RefSeq]

**Other Designations:** dolichyl-diphosphooligosaccharide--protein glycosyltransferase 63 kDa subunit

### Gene Pathway

[Metabolic pathways](#) [N-Glycan biosynthesis](#)

### Related Disease

[Tobacco Use Disorder](#)