



# SZABO SCANDIC

Part of Europa Biosite

## Produktinformation



Forschungsprodukte & Biochemikalien



Zellkultur & Verbrauchsmaterial



Diagnostik & molekulare Diagnostik



Laborgeräte & Service

Weitere Information auf den folgenden Seiten!  
See the following pages for more information!



### Lieferung & Zahlungsart

siehe unsere [Liefer- und Versandbedingungen](#)

### Zuschläge

- Mindermengenzuschlag
- Trockeneiszuschlag
- Gefahrgutzuschlag
- Expressversand

### SZABO-SCANDIC HandelsgmbH

Quellenstraße 110, A-1100 Wien

T. +43(0)1 489 3961-0

F. +43(0)1 489 3961-7

[mail@szabo-scandic.com](mailto:mail@szabo-scandic.com)

[www.szabo-scandic.com](http://www.szabo-scandic.com)

[linkedin.com/company/szaboscandic](https://www.linkedin.com/company/szaboscandic) 

## RPS2 monoclonal antibody (M01), clone 3G6

Catalog # : H00006187-M01

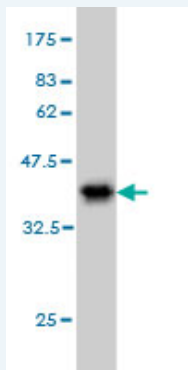
規格 : [ 100 ug ]

[List All](#)

### Specification

<b>Product Description:</b>	Mouse monoclonal antibody raised against a partial recombinant RPS2.
<b>Immunogen:</b>	RPS2 (NP_002943, 198 a.a. ~ 293 a.a) partial recombinant protein with GST tag. MW of the GST tag alone is 26 KDa.
<b>Sequence:</b>	APRGTGIVSAPVPKLLMMAGIDDCYTSARGCTATLGNFAKATFDISKTY SYLTPDLWKETVFTKSPYQEFTHLTKHTTRVSVQRTQAPAVATT
<b>Host:</b>	Mouse
<b>Reactivity:</b>	Human
<b>Isotype:</b>	IgG2a Kappa

**Quality Control Testing:** Antibody Reactive Against Recombinant Protein.



Western Blot detection against Immunogen (36.3 KDa) .

**Storage Buffer:** In 1x PBS, pH 7.4

**Storage Instruction:** Store at -20°C or lower. Aliquot to avoid repeated freezing and thawing.

**MSDS:** [Download](#)

**Datasheet:** [Download](#)

### Publication Reference

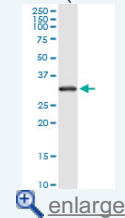
1. [PRMT3 is essential for dendritic spine maturation in rat hippocampal neurons.](#)  
Miyata S, Mori Y, Tohyama M. Brain Res. 2010 Sep 17;1352C:11-20. Epub 2010 Jul 18.

### Applications

**Western Blot (Tissue lysate)**

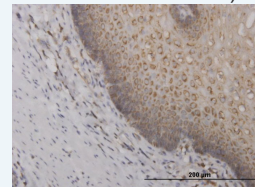
### Application Image

Western Blot (Tissue lysate)



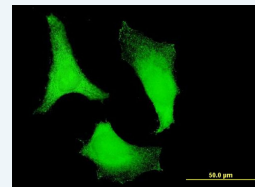
Western Blot (Recombinant protein)

Immunohistochemistry (Formalin/PFA-fixed paraffin-embedded sections)



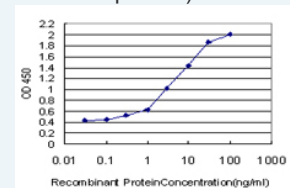
[enlarge](#)

Immunofluorescence



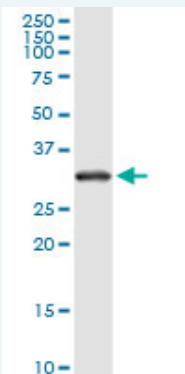
[enlarge](#)

Sandwich ELISA (Recombinant protein)



[enlarge](#)

ELISA



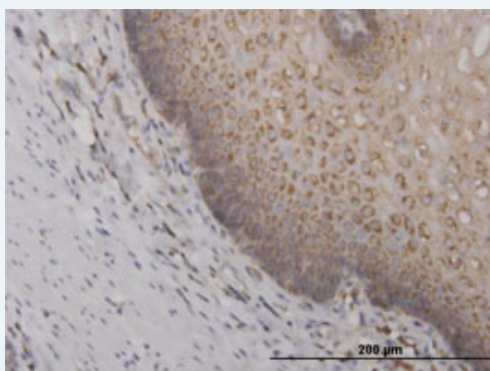
RPS2 monoclonal antibody (M01), clone 3G6. Western Blot analysis of RPS2 expression in human liver.

[Protocol Download](#)

#### Western Blot (Recombinant protein)

[Protocol Download](#)

#### Immunohistochemistry (Formalin/PFA-fixed paraffin-embedded sections)

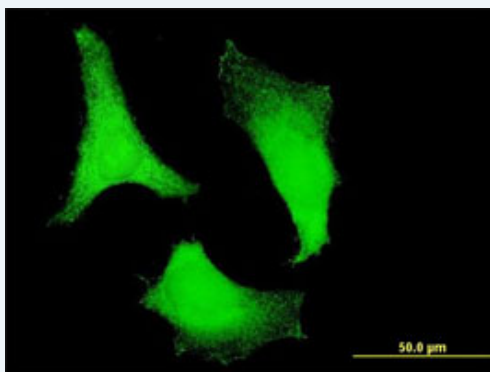


[enlarge this image](#)

Immunoperoxidase of monoclonal antibody to RPS2 on formalin-fixed paraffin-embedded human esophagus. [antibody concentration 1.2 ug/ml]

[Protocol Download](#)

#### Immunofluorescence

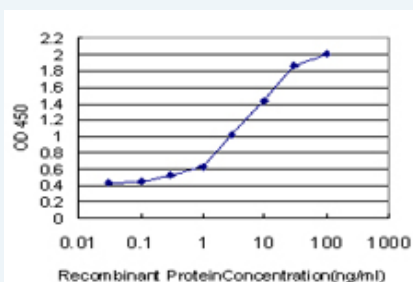


[enlarge this image](#)

Immunofluorescence of monoclonal antibody to RPS2 on HeLa cell . [antibody concentration 10 ug/ml]

[Protocol Download](#)

#### Sandwich ELISA (Recombinant protein)



Detection limit for recombinant GST tagged RPS2 is approximately 0.03ng/ml as a capture antibody.

---

**ELISA**

---

**Gene Information**

---

**Entrez GeneID:** [6187](#)**GeneBank  
Accession#:** [NM\\_002952](#)**Protein  
Accession#:** [NP\\_002943](#)**Gene Name:** RPS2**Gene Alias:** LLREP3,MGC102851,MGC117344,MGC117345**Gene  
Description:** ribosomal protein S2**Omim ID:** [603624](#)**Gene Ontology:** [Hyperlink](#)

**Gene Summary:** Ribosomes, the organelles that catalyze protein synthesis, consist of a small 40S subunit and a large 60S subunit. Together these subunits are composed of 4 RNA species and approximately 80 structurally distinct proteins. This gene encodes a ribosomal protein that is a component of the 40S subunit. The protein belongs to the S5P family of ribosomal proteins. It is located in the cytoplasm. This gene shares sequence similarity with mouse LLRep3. It is co-transcribed with the small nucleolar RNA gene U64, which is located in its third intron. As is typical for genes encoding ribosomal proteins, there are multiple processed pseudogenes of this gene dispersed through the genome. [provided by RefSeq]

**Other  
Designations:** 40S ribosomal protein S2,OK/KNS-cl.6**Gene Pathway**

---

[Ribosome](#)