



SZABO SCANDIC

Part of Europa Biosite

Produktinformation



Forschungsprodukte & Biochemikalien



Zellkultur & Verbrauchsmaterial



Diagnostik & molekulare Diagnostik



Laborgeräte & Service

Weitere Information auf den folgenden Seiten!
See the following pages for more information!



Lieferung & Zahlungsart

siehe unsere [Liefer- und Versandbedingungen](#)

Zuschläge

- Mindermengenzuschlag
- Trockeneiszuschlag
- Gefahrgutzuschlag
- Expressversand

SZABO-SCANDIC HandelsgmbH

Quellenstraße 110, A-1100 Wien

T. +43(0)1 489 3961-0

F. +43(0)1 489 3961-7

mail@szabo-scandic.com

www.szabo-scandic.com

[linkedin.com/company/szaboscandic](https://www.linkedin.com/company/szaboscandic) 

RPS5 monoclonal antibody (M02), clone 4H3

Catalog # : H00006193-M02

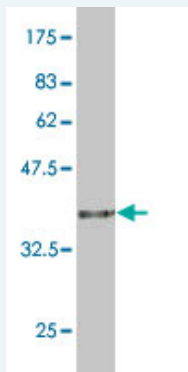
規格 : [100 ug]

[List All](#)

Specification

Product Description:	Mouse monoclonal antibody raised against a partial recombinant RPS5.
Immunogen:	RPS5 (NP_001000, 106 a.a. ~ 204 a.a) partial recombinant protein with GST tag. MW of the GST tag alone is 26 KDa.
Sequence:	ENPLQVLVNAIINSGPREDSTRIGRAGTVRRQAVDVSPLRRVNQAIWLLC TGAREAAFRNIKTIAECLADELINAAGSSNSYAIAIKKKDELERVAKSNR
Host:	Mouse
Reactivity:	Human, Mouse, Rat
Isotype:	IgG2b Kappa

Quality Control Testing: Antibody Reactive Against Recombinant Protein.



Western Blot detection against Immunogen (36.63 KDa) .

Storage Buffer: In 1x PBS, pH 7.4

Storage Instruction: Store at -20°C or lower. Aliquot to avoid repeated freezing and thawing.

MSDS: [Download](#)

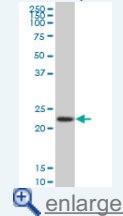
Datasheet: [Download](#)

Applications

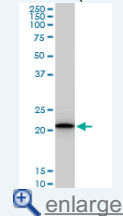
Western Blot (Cell lysate)

Application Image

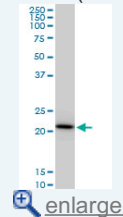
Western Blot (Cell lysate)



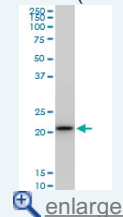
Western Blot (Cell lysate)



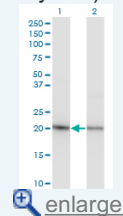
Western Blot (Cell lysate)



Western Blot (Cell lysate)

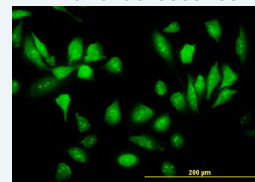


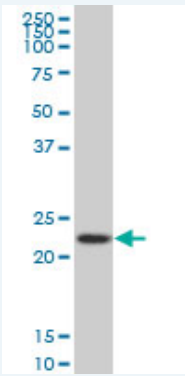
Western Blot (Transfected lysate)



Western Blot (Recombinant protein)

Immunofluorescence

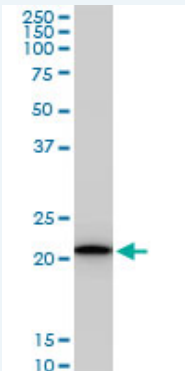




RPS5 monoclonal antibody (M02), clone 4H3 Western Blot analysis of RPS5 expression in HeLa (Cat # L013V1).

[Protocol Download](#)

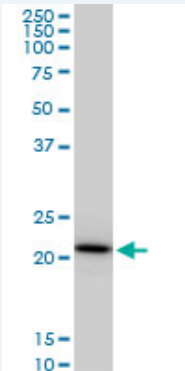
Western Blot (Cell lysate)



RPS5 monoclonal antibody (M02), clone 4H3. Western Blot analysis of RPS5 expression in PC-12(Cat # L012V1).

[Protocol Download](#)

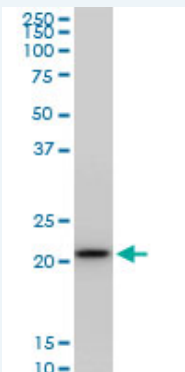
Western Blot (Cell lysate)



RPS5 monoclonal antibody (M02), clone 4H3. Western Blot analysis of RPS5 expression in Raw 264.7(Cat # L024V1).

[Protocol Download](#)

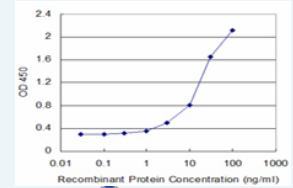
Western Blot (Cell lysate)



RPS5 monoclonal antibody (M02), clone 4H3. Western Blot analysis of RPS5 expression in NIH/3T3(Cat # L018V1).

[enlarge](#)

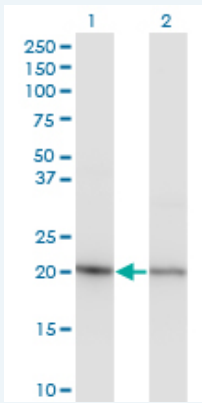
Sandwich ELISA (Recombinant protein)



[enlarge](#)

ELISA

Western Blot (Transfected lysate)



Western Blot analysis of RPS5 expression in transfected 293T cell line by RPS5 monoclonal antibody (M02), clone 4H3.

Lane 1: RPS5 transfected lysate(22.9 KDa).

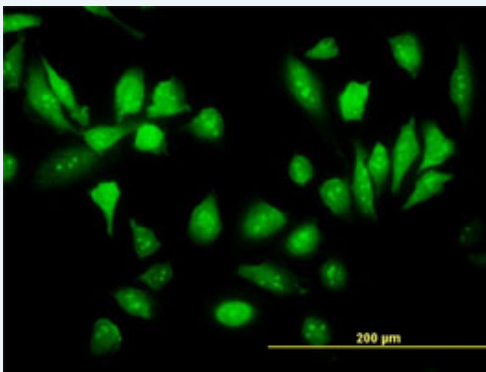
Lane 2: Non-transfected lysate.


 [Protocol Download](#)

Western Blot (Recombinant protein)

 [Protocol Download](#)

Immunofluorescence

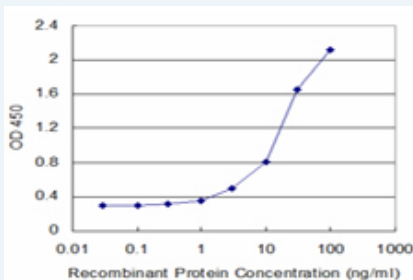


 [enlarge this image](#)

Immunofluorescence of monoclonal antibody to RPS5 on HeLa cell. [antibody concentration 10 ug/ml]

 [Protocol Download](#)

Sandwich ELISA (Recombinant protein)



Detection limit for recombinant GST tagged RPS5 is approximately 3ng/ml as a capture antibody.

 [Protocol Download](#)

ELISA

Gene Information

Entrez GeneID: [6193](#)

GeneBank [NM_001009](#)

Accession#:

Protein [NP_001000](#)

Accession#:

Gene Name: RPS5

Gene Alias: -

Gene ribosomal protein S5

Description:

Omim ID: [603630](#)

Gene Ontology: [Hyperlink](#)

Gene Summary: Ribosomes, the organelles that catalyze protein synthesis, consist of a small 40S subunit and a large 60S subunit. Together these subunits are composed of 4 RNA species and approximately 80 structurally distinct proteins. This gene encodes a ribosomal protein that is a component of the 40S subunit. The protein belongs to the S7P family of ribosomal proteins. It is located in the cytoplasm. Variable expression of this gene in colorectal cancers compared to adjacent normal tissues has been observed, although no correlation between the level of expression and the severity of the disease has been found. As is typical for genes encoding ribosomal proteins, there are multiple processed pseudogenes of this gene dispersed through the genome. [provided by RefSeq]

Other 40S ribosomal protein S5

Designations:

Gene Pathway

[Ribosome](#)

[服務條款](#) | [隱私權政策](#) | [著作及商標](#) | [網站地圖](#)

©2016 亞諾法生技股份有限公司 Abnova Corporation. 版權所有.