



# SZABO SCANDIC

Part of Europa Biosite

## Produktinformation



Forschungsprodukte & Biochemikalien



Zellkultur & Verbrauchsmaterial



Diagnostik & molekulare Diagnostik



Laborgeräte & Service

Weitere Information auf den folgenden Seiten!  
See the following pages for more information!



### Lieferung & Zahlungsart

siehe unsere [Liefer- und Versandbedingungen](#)

### Zuschläge

- Mindermengenzuschlag
- Trockeneiszuschlag
- Gefahrgutzuschlag
- Expressversand

### SZABO-SCANDIC HandelsgmbH

Quellenstraße 110, A-1100 Wien

T. +43(0)1 489 3961-0

F. +43(0)1 489 3961-7

[mail@szabo-scandic.com](mailto:mail@szabo-scandic.com)

[www.szabo-scandic.com](http://www.szabo-scandic.com)

[linkedin.com/company/szaboscandic](https://www.linkedin.com/company/szaboscandic) 

## RPS6KA1 monoclonal antibody (M02), clone 4E11

Catalog # : H00006195-M02

規格 : [ 100 ug ]

[List All](#)

### Specification

**Product Description:** Mouse monoclonal antibody raised against a full-length recombinant RPS6KA1.

**Immunogen:** RPS6KA1 (AAH14966.1, 1 a.a. ~ 735 a.a) full-length recombinant protein with GST tag. MW of the GST tag alone is 26 KDa.

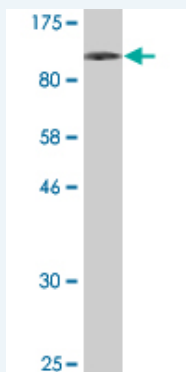
**Sequence:**  
 MPLAQLKEPWLMELVPLDPENGQTSGEEAGLQPSKDEGLVKEISITHH  
 VKAGSEKADPSHFELLKVLGQGSFGKVFVLRKVTRPDSGHLIYAMKVLKK  
 ATLKVRDRVRTKMERDILADVNHFPVVKLHYAFQTEGKLYLILDFLRGGD  
 LFTRLSKEVMFTEEDVKFYLAELALGLDHLHSLGIYRDLKPENILLDEEGH  
 IKLTDGFLSKEAIDHEKKAYSFCGTVEYMAPEVNRQGHSHSADWWSYG  
 VLMFEMLTGSLPFQKDRKETMTLILKAKLGMPQFLSTEAQSLLRALFK  
 RNPANRLGSGPDGAEIIRHVFYSTIDWNKLYRREIKPPFKPAVAQPDDT  
 FYFDTEFTSRTPKDSPGIPPSAGAHQLFRGFSFVATGLMEDDGKPRAP  
 QAPLHSVQQLHGKNLVFSDGYVVKETIGVGSYSECKRCVHKATNMEYA  
 VKVIDKSKRDPSEEIILLRYGQHPNITLKD VYDDGKHVYLVTELMRGGEL  
 LDKILRQKFFSEREASFVLTIGKTVEYLHSQGVVHRDLKPSNILYVDESG  
 NPECLRICDFGFAKQLRAENGLLMTPCYTANFVAPEVLKRQGYDEGCDI  
 WSLGILLYTMLAGYTPFANGPSDTPPEILTRIGSGKFTLSGGMNWNTVSET  
 AKDLVSKMLHVDPHQRLTAKQVLQHPWVTQKDKLPQSLSHQDLQLVK  
 GAMAATYSALNSSKPTPQLKPIESSILAQRVRVKLPSTTL

**Host:** Mouse

**Reactivity:** Human

**Isotype:** IgG2b Kappa

**Quality Control Testing:** Antibody Reactive Against Recombinant Protein.



Western Blot detection against Immunogen (106.2599 KDa) .

**Storage Buffer:** In 1x PBS, pH 7.4

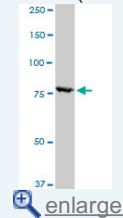
**Storage Instruction:** Store at -20°C or lower. Aliquot to avoid repeated freezing and thawing.

**MSDS:** [Download](#)

**Datasheet:** [Download](#)

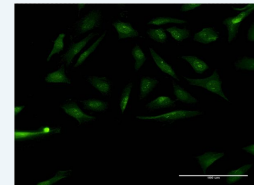
### Application Image

Western Blot (Cell lysate)

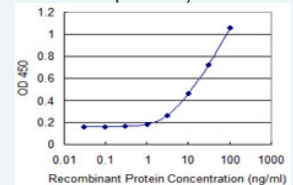


Western Blot (Recombinant protein)

Immunofluorescence



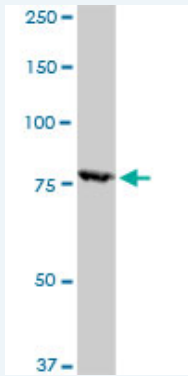
Sandwich ELISA (Recombinant protein)



ELISA

## Applications

### Western Blot (Cell lysate)



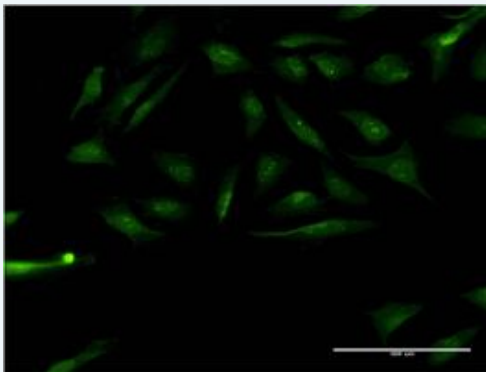
RPS6KA1 monoclonal antibody (M02), clone 4E11. Western Blot analysis of RPS6KA1 expression in K-562 (Cat # L009V1).


 [Protocol Download](#)

### Western Blot (Recombinant protein)

 [Protocol Download](#)

### Immunofluorescence

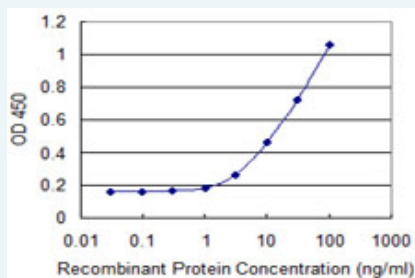


 [enlarge this image](#)

Immunofluorescence of monoclonal antibody to RPS6KA1 on HeLa cell. [antibody concentration 10 ug/ml]

 [Protocol Download](#)

### Sandwich ELISA (Recombinant protein)



Detection limit for recombinant GST tagged RPS6KA1 is 1 ng/ml as a capture antibody.

 [Protocol Download](#)

### ELISA

### Gene Information

Entrez GeneID: [6195](#)

GeneBank [BC014966](#)

Accession#:

Protein [AAH14966.1](#)

Accession#:

Gene Name: RPS6KA1

**Gene Alias:** HU-1,MAPKAPK1A,RSK,RSK1

**Gene Description:** ribosomal protein S6 kinase, 90kDa, polypeptide 1

**Omim ID:** [601684](#)

**Gene Ontology:** [Hyperlink](#)

**Gene Summary:** This gene encodes a member of the RSK (ribosomal S6 kinase) family of serine/threonine kinases. This kinase contains 2 nonidentical kinase catalytic domains and phosphorylates various substrates, including members of the mitogen-activated kinase (MAPK) signalling pathway. The activity of this protein has been implicated in controlling cell growth and differentiation. Alternate transcriptional splice variants, encoding different isoforms, have been characterized. [provided by RefSeq]

**Other Designations:** OTTHUMP00000004113,S6K-alpha 1,dJ590P13.1 (ribosomal protein S6 kinase, 90kD, polypeptide 1),p90-RSK 1,ribosomal protein S6 kinase alpha 1,ribosomal protein S6 kinase, 90kD, 1,ribosomal protein S6 kinase, 90kD, polypeptide 1

#### Gene Pathway

[Long-term potentiation](#) [MAPK signaling pathway](#) [mTOR signaling pathway](#)  
[Neurotrophin signaling pathway](#)

#### Related Disease

[Breast cancer](#) [Breast Neoplasms](#) [Cardiovascular Diseases](#) [Diabetes Mellitus, Type 2](#)  
[Edema](#) [Genetic Predisposition to Disease](#) [Kidney Failure, Chronic](#)

[服務條款](#) | [隱私權政策](#) | [著作及商標](#) | [網站地圖](#)

©2016 亞諾法生技股份有限公司 Abnova Corporation. 版權所有.