



SZABO SCANDIC

Part of Europa Biosite

Produktinformation



Forschungsprodukte & Biochemikalien



Zellkultur & Verbrauchsmaterial



Diagnostik & molekulare Diagnostik



Laborgeräte & Service

Weitere Information auf den folgenden Seiten!
See the following pages for more information!



Lieferung & Zahlungsart

siehe unsere [Liefer- und Versandbedingungen](#)

Zuschläge

- Mindermengenzuschlag
- Trockeneiszuschlag
- Gefahrgutzuschlag
- Expressversand

SZABO-SCANDIC HandelsgmbH

Quellenstraße 110, A-1100 Wien

T. +43(0)1 489 3961-0

F. +43(0)1 489 3961-7

mail@szabo-scandic.com

www.szabo-scandic.com

[linkedin.com/company/szaboscandic](https://www.linkedin.com/company/szaboscandic) 

RPS6KA2 monoclonal antibody (M01), clone 1F6

Catalog # : H00006196-M01

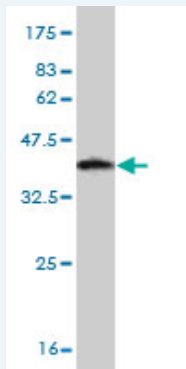
規格 : [100 ug]

[List All](#)

Specification

| | |
|-----------------------------|---|
| Product Description: | Mouse monoclonal antibody raised against a partial recombinant RPS6KA2. |
| Immunogen: | RPS6KA2 (AAH02363, 631 a.a. ~ 733 a.a) partial recombinant protein with GST tag. MW of the GST tag alone is 26 KDa. |
| Sequence: | YALSGGNWDSISDAAKDVSKMLHVDPHQRLTAMQVLKHPWVWNREYLSPNQLSRQDVHLVKGAMAATYFALNRTQPAPRLEPVLSSNLAQRRGMKRLTSTRL |
| Host: | Mouse |
| Reactivity: | Human |
| Isotype: | IgG2a Kappa |

Quality Control Testing: Antibody Reactive Against Recombinant Protein.



Western Blot detection against Immunogen (37.07 KDa) .

Storage Buffer: In 1x PBS, pH 7.4

Storage Instruction: Store at -20°C or lower. Aliquot to avoid repeated freezing and thawing.

MSDS: [Download](#)

Datasheet: [Download](#)

Publication Reference

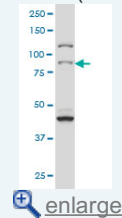
1. p90 ribosomal S6 kinase 3 contributes to cardiac insufficiency in α -tropomyosin Glu180Gly transgenic mice. Passariello CL, Gayanilo M, Kritzer MD, Thakur H, Cozacov Z, Rusconi F, Wieczorek D, Sanders M, Li J, Kapiloff M. *Am J Physiol Heart Circ Physiol.* 2013 Oct;305(7):H1010-9. doi: 10.1152/ajpheart.00237.2013. Epub 2013 Aug 2.

Applications

Western Blot (Cell lysate)

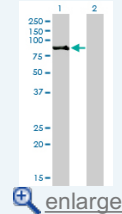
Application Image

Western Blot (Cell lysate)



[enlarge](#)

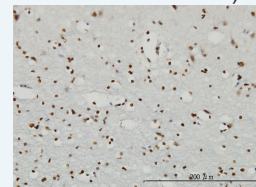
Western Blot (Transfected lysate)



[enlarge](#)

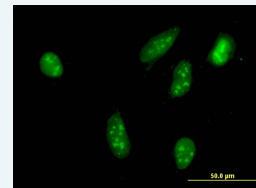
Western Blot (Recombinant protein)

Immunohistochemistry (Formalin/PFA-fixed paraffin-embedded sections)



[enlarge](#)

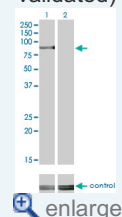
Immunofluorescence



[enlarge](#)

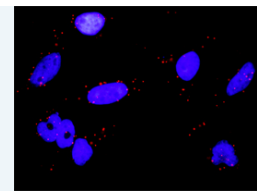
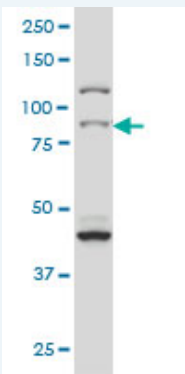
ELISA

RNAi Knockdown (Antibody validated)



[enlarge](#)

In situ Proximity Ligation Assay (Cell)

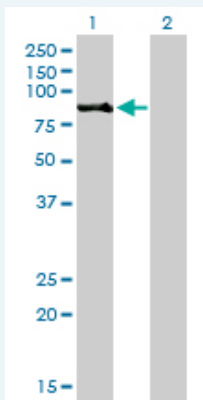


[enlarge](#)

RPS6KA2 monoclonal antibody (M01), clone 1F6 Western Blot analysis of RPS6KA2 expression in HeLa S3 NE (Cat # L013V3).

[Protocol Download](#)

Western Blot (Transfected lysate)



Western Blot analysis of RPS6KA2 expression in transfected 293T cell line by RPS6KA2 monoclonal antibody (M01), clone 1F6.

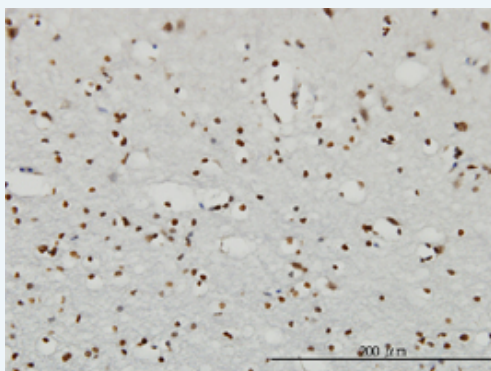
Lane 1: RPS6KA2 transfected lysate(83.2 KDa).
Lane 2: Non-transfected lysate.

[Protocol Download](#)

Western Blot (Recombinant protein)

[Protocol Download](#)

Immunohistochemistry (Formalin/PFA-fixed paraffin-embedded sections)

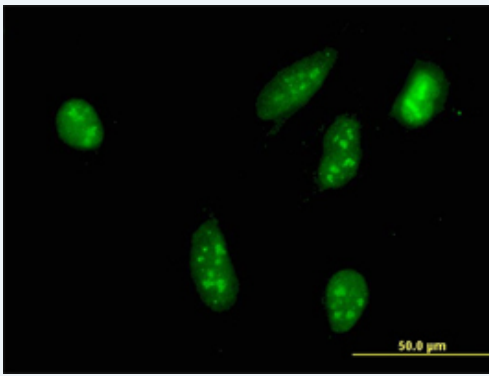


[enlarge this image](#)

Immunoperoxidase of monoclonal antibody to RPS6KA2 on formalin-fixed paraffin-embedded human cerebral cortex. [antibody concentration 3 ug/ml]

[Protocol Download](#)

Immunofluorescence



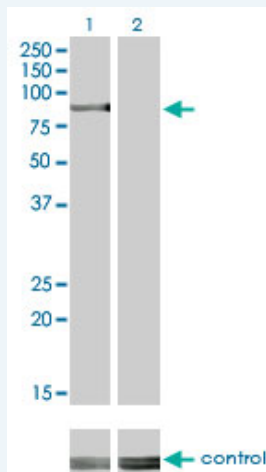
[enlarge this image](#)

Immunofluorescence of monoclonal antibody to RPS6KA2 on HeLa cell. [antibody concentration 10 ug/ml]

[Protocol Download](#)

ELISA

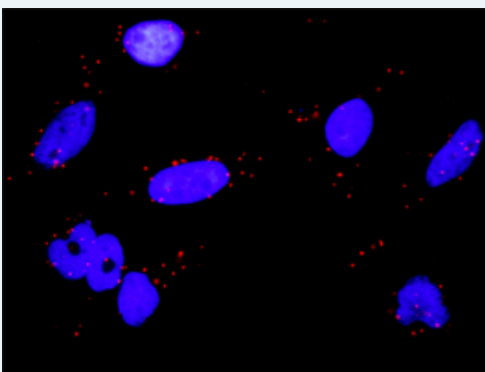
RNAi Knockdown (Antibody validated)



Western blot analysis of RPS6KA2 over-expressed 293 cell line, cotransfected with RPS6KA2 Validated Chimera RNAi (Cat # H00006196-R01V) (Lane 2) or non-transfected control (Lane 1). Blot probed with RPS6KA2 monoclonal antibody (M01) clone 1F6 (Cat # H00006196-M01). GAPDH (36.1 kDa) used as specificity and loading control.

[Protocol Download](#)

In situ Proximity Ligation Assay (Cell)



Proximity Ligation Analysis of protein-protein interactions between MAPK3 and RPS6KA2. HeLa cells were stained with anti-MAPK3 rabbit purified polyclonal 1:1200 and anti-RPS6KA2 mouse monoclonal antibody 1:50. Each red dot represents the detection of protein-protein interaction complex, and nuclei were counterstained with DAPI (blue).

Gene Information

Entrez GeneID: [6196](#)

GeneBank [BC002363](#)

Accession#:

Protein [AAH02363](#)

Accession#:

Gene Name: RPS6KA2

Gene Alias: HU-2,MAPKAPK1C,RSK,RSK3,S6K-alpha,S6K-alpha2,p90-RSK3,pp90RSK3

Gene Description: ribosomal protein S6 kinase, 90kDa, polypeptide 2

Omim ID: [601685](#)

Gene Ontology: [Hyperlink](#)

Gene Summary: This gene encodes a member of the RSK (ribosomal S6 kinase) family of serine/threonine kinases. This kinase contains 2 non-identical kinase catalytic domains and phosphorylates various substrates, including members of the mitogen-activated kinase (MAPK) signalling pathway. The activity of this protein has been implicated in controlling cell growth and differentiation. Alternate transcriptional splice variants, encoding different isoforms, have been characterized. [provided by RefSeq]

Other Designations: ribosomal S6 kinase 3,ribosomal protein S6 kinase alpha 2,ribosomal protein S6 kinase, 90kD, polypeptide 2

Gene Pathway

[Long-term potentiation](#) [MAPK signaling pathway](#) [mTOR signaling pathway](#)
[Neurotrophin signaling pathway](#)

Related Disease

[Tobacco Use Disorder](#)

[服務條款](#) | [隱私權政策](#) | [著作及商標](#) | [網站地圖](#)

©2016 亞諾法生技股份有限公司 Abnova Corporation. 版權所有.