



# SZABO SCANDIC

Part of Europa Biosite

## Produktinformation



Forschungsprodukte & Biochemikalien



Zellkultur & Verbrauchsmaterial



Diagnostik & molekulare Diagnostik



Laborgeräte & Service

Weitere Information auf den folgenden Seiten!  
See the following pages for more information!



### Lieferung & Zahlungsart

siehe unsere [Liefer- und Versandbedingungen](#)

### Zuschläge

- Mindermengenzuschlag
- Trockeneiszuschlag
- Gefahrgutzuschlag
- Expressversand

### SZABO-SCANDIC HandelsgmbH

Quellenstraße 110, A-1100 Wien

T. +43(0)1 489 3961-0

F. +43(0)1 489 3961-7

[mail@szabo-scandic.com](mailto:mail@szabo-scandic.com)

[www.szabo-scandic.com](http://www.szabo-scandic.com)

[linkedin.com/company/szaboscandic](https://www.linkedin.com/company/szaboscandic) 

**RPS6KA3 purified MaxPab rabbit polyclonal antibody (D01P)** MaxPab®

Catalog # : H00006197-D01P

規格 : [ 100 ug ]

[List All](#)

**Specification**

**Product Description:** Rabbit polyclonal antibody raised against a full-length human RPS6KA3 protein.

**Immunogen:** RPS6KA3 (AAH96303.1, 1 a.a. ~ 740 a.a) full-length human protein.

**Sequence:**  
 MPLAQLADPWQKMAVESPSDSAENGQQIMDEPMGEEEINPQTEEVSIKEI  
 AITHHVKEGHEKADPSQFELLKVLGQGSFGKVFVKKILGSDARQLYAMK  
 VLKKATLKVDRVRTKMERDILVEVNHPFIVKLHYAFQTEGKLYLIDFLR  
 GGDLFTRL SKEVMFTEEDVKFYLAELALALDHLHSLGIYRDLKPENILLDE  
 EGHKLTDFGLSKESIDHEKKAYSFCGTVEYMAPEVNVNRRGHTQSADWW  
 SFGVLMFEMLTGTLPGGKDRKETMTMILKAKLGMPQFLSPEAQSLLR  
 MLFKRNPANRLGAGPDGVVEIKRHSFFSTIDWNKLYRREIHPPFKPATGR  
 PEDTFYFDPEFTAKTPKDSGIPPSANAHQLFRGFSFVAITSDDESQAM  
 QTVGVHSIVQQLHRNSIQFTDGYEVKEDIGVGSYSVCKRCHKATNMEFA  
 VKIIDKSKRDPTEEIEILLRYGQHPNIITLKD VYDDGKYVYVVTMLMKGGELL  
 DKILRQKFFSEREASAVLFTITKTVEYLHAQGVVHRDLKPSNILYVDESN  
 PESIRICDFGFAKQLRAENGLLMTPCYTANFVAPEVLKRQGYDAACDIWS  
 LGVLLYTMLTGYTPFANGPDDTPEEILARIGSGKFSLSGGYWNVSVDTA  
 KDLVSKMLHVDPHQRLTAALVLRHPWIVHWDQLPQYQLNRQDAPHLVK  
 GAMAA TYSALNRNQSPVLEPVGRSTLAQRRGIKKITSTAL

**Host:** Rabbit

**Reactivity:** Human, Mouse

**Quality Control Testing:** Antibody reactive against mammalian transfected lysate.

**Storage Buffer:** In 1x PBS, pH 7.4

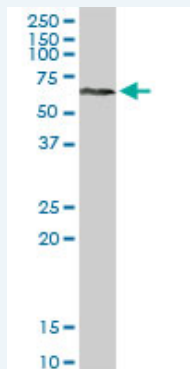
**Storage Instruction:** Store at -20°C or lower. Aliquot to avoid repeated freezing and thawing.

**MSDS:**  [Download](#)

**Datasheet:**  [Download](#)

**Applications**

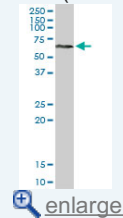
**Western Blot (Tissue lysate)**



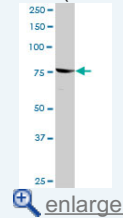
RPS6KA3 MaxPab rabbit polyclonal antibody. Western Blot analysis of RPS6KA3

**Application Image**

**Western Blot (Tissue lysate)**



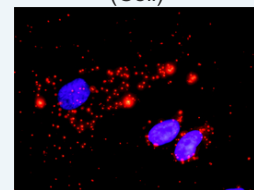
**Western Blot (Tissue lysate)**



**Western Blot (Transfected lysate)**



**In situ Proximity Ligation Assay (Cell)**

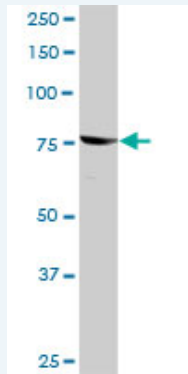


 [enlarge](#)

expression in human placenta.

 [Protocol Download](#)

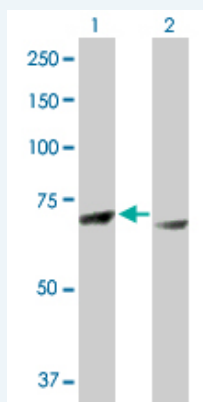
### Western Blot (Tissue lysate)



RPS6KA3 MaxPab rabbit polyclonal antibody. Western Blot analysis of RPS6KA3 expression in mouse lung.

 [Protocol Download](#)

### Western Blot (Transfected lysate)

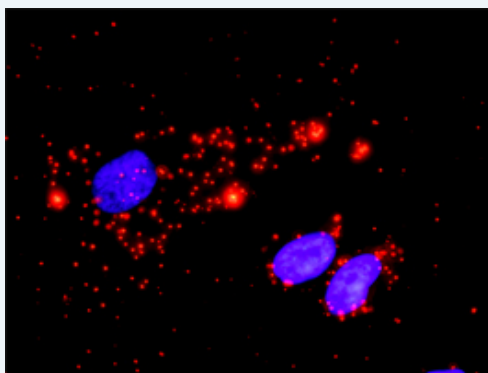


Western Blot analysis of RPS6KA3 expression in transfected 293T cell line ([H00006197-T01](#)) by RPS6KA3 MaxPab polyclonal antibody.

Lane 1: RPS6KA3 transfected lysate(83.80 kDa).  
Lane 2: Non-transfected lysate.

 [Protocol Download](#)

### In situ Proximity Ligation Assay (Cell)



Proximity Ligation Analysis of protein-protein interactions between RPS6KA3 and MAPK1. HeLa cells were stained with anti-RPS6KA3 rabbit purified polyclonal 1:1200 and anti-MAPK1 mouse monoclonal antibody 1:50. Each red dot represents the detection of protein-protein interaction complex, and nuclei were counterstained with DAPI (blue).

### Gene Information

Entrez GeneID: [6197](#)

GeneBank [BC096303](#)

Accession#:

|  |   |
|--|---|
| <b>Protein Accession#:</b>   | <a href="#">AAH96303.1</a>  |
| <b>Gene Name:</b>  | RPS6KA3   |
| <b>Gene Alias:</b>   | CLS,HU-3,ISPK-1,MAPKAPK1B,MRX19,RSK,RSK2,S6K-alpha3,p90-RSK2,pp90RSK2   |
| <b>Gene Description:</b>   | ribosomal protein S6 kinase, 90kDa, polypeptide 3   |
| <b>Omim ID:</b>  | <a href="#">300075</a> , <a href="#">303600</a>   |
| <b>Gene Ontology:</b>  | <a href="#">Hyperlink</a>   |
| <b>Gene Summary:</b>   | This gene encodes a member of the RSK (ribosomal S6 kinase) family of serine/threonine kinases. This kinase contains 2 non-identical kinase catalytic domains and phosphorylates various substrates, including members of the mitogen-activated kinase (MAPK) signalling pathway. The activity of this protein has been implicated in controlling cell growth and differentiation. Mutations in this gene have been associated with Coffin-Lowry syndrome (CLS). [provided by RefSeq] |
| <b>Other Designations:</b>   | OTTHUMP00000023036,insulin-stimulated protein kinase 1,mental retardation, X-linked 19,ribosomal protein S6 kinase, 90kD, polypeptide 3   |
| <b>Gene Pathway</b>  |   |
| <a href="#">Long-term potentiation</a> <a href="#">MAPK signaling pathway</a> <a href="#">mTOR signaling pathway</a><br><a href="#">Neurotrophin signaling pathway</a> |   |
| <b>Related Disease</b>   |   |
| <a href="#">Head and Neck Neoplasms</a> <a href="#">Neoplasm Recurrence, Local</a> <a href="#">Neoplasms, Second Primary</a>   |   |

[服務條款](#) | [隱私權政策](#) | [著作及商標](#) | [網站地圖](#)

©2016 亞諾法生技股份有限公司 Abnova Corporation. 版權所有.