



SZABO SCANDIC

Part of Europa Biosite

Produktinformation



Forschungsprodukte & Biochemikalien



Zellkultur & Verbrauchsmaterial



Diagnostik & molekulare Diagnostik



Laborgeräte & Service

Weitere Information auf den folgenden Seiten!
See the following pages for more information!



Lieferung & Zahlungsart

siehe unsere [Liefer- und Versandbedingungen](#)

Zuschläge

- Mindermengenzuschlag
- Trockeneiszuschlag
- Gefahrgutzuschlag
- Expressversand

SZABO-SCANDIC HandelsgmbH

Quellenstraße 110, A-1100 Wien

T. +43(0)1 489 3961-0

F. +43(0)1 489 3961-7

mail@szabo-scandic.com

www.szabo-scandic.com

[linkedin.com/company/szaboscandic](https://www.linkedin.com/company/szaboscandic) 

RPS6KB1 MaxPab mouse polyclonal antibody (B01) MaxPab®

Catalog # : H00006198-B01

規格 : [50 uL]

[List All](#)

Specification

Product Description: Mouse polyclonal antibody raised against a full-length human RPS6KB1 protein.

Immunogen: RPS6KB1 (NP_003152, 1 a.a. ~ 525 a.a) full-length human protein.

Sequence:
 MRRRRRRDGFYPAPDFRDREAEDMAGVFDIDLQPEDAGSEDELEEG
 GQLNESMDHGGVGPYELGMEHCEKFEISETSVNRGPEKIRPECFELLRV
 LGKGGYGKVFQVRKVTGANTGKIFAMKVLKKAMIVRNAKDTAHTKAERNI
 LEEVKHPFIVDLIYAFQTGGKLYLILEYLSGGELFMQLEREGIFMEDTACF
 YLAEISMALGHLHQKGIYRDLKPENIMLNHQGHVKLTDFGLCKESIHDGTV
 THTFCGTIEMAPEILMRSGHNRAVDWWSL GALMYDMLTGAPPFTGEN
 RKKTIKILKCKLNLPPYLTQEARDLLKLLKRNAASRLGAGPGDAGEVQ
 AHPFFRHINWEELLARKVEPPFKPLLQSEEDVSQFDSKFTRQTPVDSPD
 DSTLSESANQVFLGFTYVAPSVLESVKEKFSFEPKIRSPRRFIGSPRTPV
 SPVKFSPGDFWGRGASASTANPQTPVEYPMETSGIEQMDVTMSGEASA
 PLPIRQPNSGPYKKQAFPMISKRPEHLRMNL

Host: Mouse

Reactivity: Human

Quality Control Testing: Antibody reactive against mammalian transfected lysate.

Storage Buffer: No additive

Storage Instruction: Store at -20°C or lower. Aliquot to avoid repeated freezing and thawing.

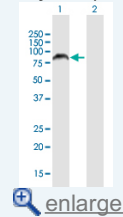
Note: For IHC and IF applications, antibody purification with Protein A will be needed prior to use.

MSDS: [Download](#)

Datasheet: [Download](#)

Application Image

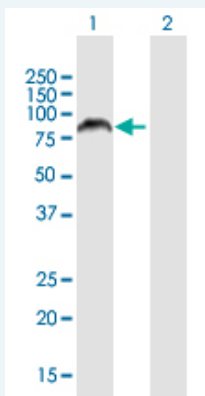
Western Blot (Transfected lysate)



[enlarge](#)

Applications

Western Blot (Transfected lysate)




Western Blot analysis of RPS6KB1 expression in transfected 293T cell line ([H00006198-](#)

T01) by RPS6KB1 MaxPab polyclonal antibody.

Lane 1: RPS6KB1 transfected lysate(57.75 KDa).

Lane 2: Non-transfected lysate.

 [Protocol Download](#)

Gene Information

Entrez GeneID: [6198](#)

GeneBank [NM_003161](#)

Accession#:

Protein [NP_003152](#)

Accession#:

Gene Name: RPS6KB1

Gene Alias: PS6K,S6K,S6K1,STK14A,p70(S6K)-alpha,p70-S6K,p70-alpha

Gene ribosomal protein S6 kinase, 70kDa, polypeptide 1

Description:

Omim ID: [608938](#)

Gene Ontology: [Hyperlink](#)

Gene Summary: This gene encodes a member of the RSK (ribosomal S6 kinase) family of serine/threonine kinases. This kinase contains 2 non-identical kinase catalytic domains and phosphorylates several residues of the S6 ribosomal protein. The kinase activity of this protein leads to an increase in protein synthesis and cell proliferation. Amplification of the region of DNA encoding this gene and overexpression of this kinase are seen in some breast cancer cell lines. Alternate translational start sites have been described and alternate transcriptional splice variants have been observed but have not been thoroughly characterized. [provided by RefSeq]

Other p70 S6 kinase, alpha 1,p70 S6 kinase, alpha 2,ribosomal protein S6

Designations: kinase, 70kD, polypeptide 1,serine/threonine kinase 14 alpha

Gene Pathway

[Acute myeloid leukemia](#) [ErbB signaling pathway](#) [Fc gamma R-mediated phagocytosis](#)
[Insulin signaling pathway](#) [mTOR signaling pathway](#) [TGF-beta signaling pathway](#)

Related Disease

[Cardiovascular Diseases](#) [Diabetes Mellitus, Type 2](#) [Edema](#) [Head and Neck Neoplasms](#)
[Neoplasm Recurrence, Local](#) [Neoplasms, Second Primary](#)

[服務條款](#) | [隱私權政策](#) | [著作及商標](#) | [網站地圖](#)

©2016 亞諾法生技股份有限公司 Abnova Corporation. 版權所有.