



SZABO SCANDIC

Part of Europa Biosite

Produktinformation



Forschungsprodukte & Biochemikalien



Zellkultur & Verbrauchsmaterial



Diagnostik & molekulare Diagnostik



Laborgeräte & Service

Weitere Information auf den folgenden Seiten!
See the following pages for more information!



Lieferung & Zahlungsart

siehe unsere [Liefer- und Versandbedingungen](#)

Zuschläge

- Mindermengenzuschlag
- Trockeneiszuschlag
- Gefahrgutzuschlag
- Expressversand

SZABO-SCANDIC HandelsgmbH

Quellenstraße 110, A-1100 Wien

T. +43(0)1 489 3961-0

F. +43(0)1 489 3961-7

mail@szabo-scandic.com

www.szabo-scandic.com

[linkedin.com/company/szaboscandic](https://www.linkedin.com/company/szaboscandic) 

RPS6KB1 purified MaxPab mouse polyclonal antibody (B01P) MaxPab®

Catalog # : H00006198-B01P

規格 : [50 ug]

[List All](#)

Specification

Product Description: Mouse polyclonal antibody raised against a full-length human RPS6KB1 protein.

Immunogen: RPS6KB1 (NP_003152.1, 1 a.a. ~ 525 a.a) full-length human protein.

Sequence:
 MRRRRRRDGFYPAPDFRDREAEDMAGVFDIDLQPEDAGSEDELEEG
 GQLNESMDHGGVGPYELGMEHCEKFEISETSVNRGPEKIRPECFELLRV
 LGKGGYGKVFQVRKVTGANTGKIFAMKVLKKAMIVRNAKDTAHTKAERNI
 LEEVKHPFIVDLIYAFQTGGKLYLILEYLSGGELFMQLEREGIFMEDTACF
 YLAEISMALGHLHQKGIYRDLKPENIMLNHQGHVKLTDGFLCKESIHDGTV
 THTFCGTIEYMAPEILMRSGHNRAVDWWSL GALMYDMLTGAPPFTGEN
 RKKTIKILKCKLNLPPYL TQEARDLLKLLKRNAASRLGAGPGDAGEVQ
 AHPFFRHINWEELLARKVEPPFKPLLQSEEDVSQFDSKFTRQTPVDSPD
 DSTLSESANQVFLGFTYVAPSVLESVKEKFSFEKIRSPRRFIGSPRTPV
 SPVKFSPGDFWGRGASASTANPQTPEYPMETSGIEQMDVTMSGEASA
 PLPIRQPNSGPYKKQAFPMISKRPEHLRMNL

Host: Mouse

Reactivity: Human

Quality Control Testing: Antibody reactive against mammalian transfected lysate.

Storage Buffer: In 1x PBS, pH 7.4

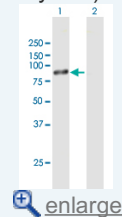
Storage Instruction: Store at -20°C or lower. Aliquot to avoid repeated freezing and thawing.

MSDS:  [Download](#)

Datasheet:  [Download](#)

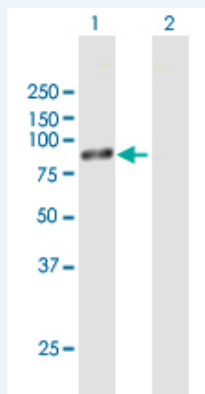
Application Image

Western Blot (Transfected lysate)



Applications

Western Blot (Transfected lysate)



Western Blot analysis of RPS6KB1 expression in transfected 293T cell line (H00006198-T01) by RPS6KB1 MaxPab polyclonal antibody.

Lane 1: RPS6KB1 transfected lysate(57.75 KDa).

Gene Information

Entrez GeneID: [6198](#)

**GeneBank
Accession#:** [NM_003161.2](#)

**Protein
Accession#:** [NP_003152.1](#)

Gene Name: RPS6KB1

Gene Alias: PS6K,S6K,S6K1,STK14A,p70(S6K)-alpha,p70-S6K,p70-alpha

**Gene
Description:** ribosomal protein S6 kinase, 70kDa, polypeptide 1

Omim ID: [608938](#)

Gene Ontology: [Hyperlink](#)

Gene Summary: This gene encodes a member of the RSK (ribosomal S6 kinase) family of serine/threonine kinases. This kinase contains 2 non-identical kinase catalytic domains and phosphorylates several residues of the S6 ribosomal protein. The kinase activity of this protein leads to an increase in protein synthesis and cell proliferation. Amplification of the region of DNA encoding this gene and overexpression of this kinase are seen in some breast cancer cell lines. Alternate translational start sites have been described and alternate transcriptional splice variants have been observed but have not been thoroughly characterized. [provided by RefSeq]

**Other
Designations:** p70 S6 kinase, alpha 1,p70 S6 kinase, alpha 2,ribosomal protein S6 kinase, 70kD, polypeptide 1,serine/threonine kinase 14 alpha

Gene Pathway

[Acute myeloid leukemia](#) [ErbB signaling pathway](#) [Fc gamma R-mediated phagocytosis](#)
[Insulin signaling pathway](#) [mTOR signaling pathway](#) [TGF-beta signaling pathway](#)

Related Disease

[Cardiovascular Diseases](#) [Diabetes Mellitus, Type 2](#) [Edema](#) [Head and Neck Neoplasms](#)
[Neoplasm Recurrence, Local](#) [Neoplasms, Second Primary](#)