



SZABO SCANDIC

Part of Europa Biosite

Produktinformation



Forschungsprodukte & Biochemikalien



Zellkultur & Verbrauchsmaterial



Diagnostik & molekulare Diagnostik



Laborgeräte & Service

Weitere Information auf den folgenden Seiten!
See the following pages for more information!



Lieferung & Zahlungsart

siehe unsere [Liefer- und Versandbedingungen](#)

Zuschläge

- Mindermengenzuschlag
- Trockeneiszuschlag
- Gefahrgutzuschlag
- Expressversand

SZABO-SCANDIC HandelsgmbH

Quellenstraße 110, A-1100 Wien

T. +43(0)1 489 3961-0

F. +43(0)1 489 3961-7

mail@szabo-scandic.com

www.szabo-scandic.com

[linkedin.com/company/szaboscandic](https://www.linkedin.com/company/szaboscandic) 

RPS6KB1 monoclonal antibody (M03), clone 2C2

Catalog # : H00006198-M03

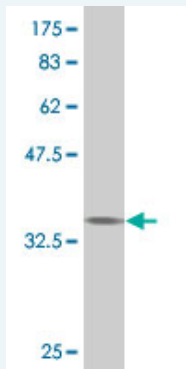
規格 : [100 ug]

[List All](#)

Specification

Product Description:	Mouse monoclonal antibody raised against a partial recombinant RPS6KB1.
Immunogen:	RPS6KB1 (NP_003152, 416 a.a. ~ 525 a.a) partial recombinant protein with GST tag. MW of the GST tag alone is 26 KDa.
Sequence:	PSVLESVKEKFSFEPKIRSPRRFIGSPRTPVSPVKFSPGDFWGRGASAS TANPQTPVEYPMETSGIEQMDVTMSGEASAPLPIRQPNNGPYKKQAFPM ISKRPEHLRMNL
Host:	Mouse
Reactivity:	Human, Mouse, Rat
Isotype:	IgG1 Kappa

Quality Control Testing: Antibody Reactive Against Recombinant Protein.



Western Blot detection against Immunogen (37.84 KDa) .

Storage Buffer: In 1x PBS, pH 7.4

Storage Instruction: Store at -20°C or lower. Aliquot to avoid repeated freezing and thawing.

MSDS: [Download](#)

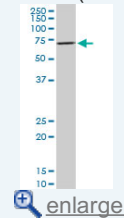
Datasheet: [Download](#)

Applications

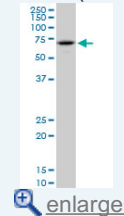
Western Blot (Cell lysate)

Application Image

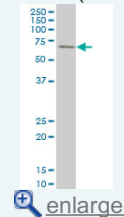
Western Blot (Cell lysate)



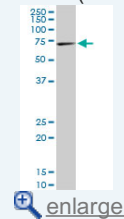
Western Blot (Cell lysate)



Western Blot (Cell lysate)

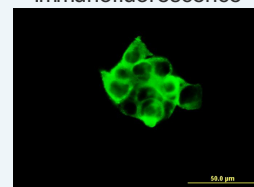


Western Blot (Cell lysate)

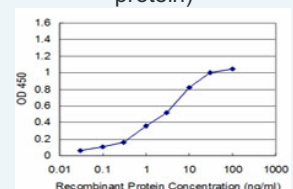


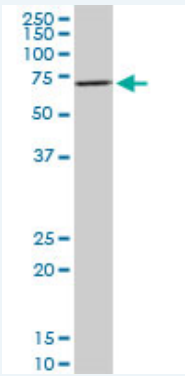
Western Blot (Recombinant protein)

Immunofluorescence




Sandwich ELISA (Recombinant protein)

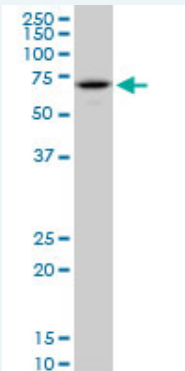




RPS6KB1 monoclonal antibody (M03), clone 2C2. Western Blot analysis of RPS6KB1 expression in PC-12(Cat # L012V1).

 [Protocol Download](#)

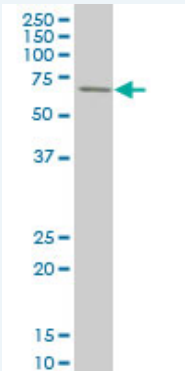
Western Blot (Cell lysate)



RPS6KB1 monoclonal antibody (M03), clone 2C2. Western Blot analysis of RPS6KB1 expression in Raw 264.7(Cat # L024V1).

 [Protocol Download](#)

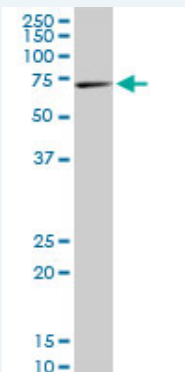
Western Blot (Cell lysate)




RPS6KB1 monoclonal antibody (M03), clone 2C2 Western Blot analysis of RPS6KB1 expression in A-431 (Cat # L015V1).

 [Protocol Download](#)

Western Blot (Cell lysate)



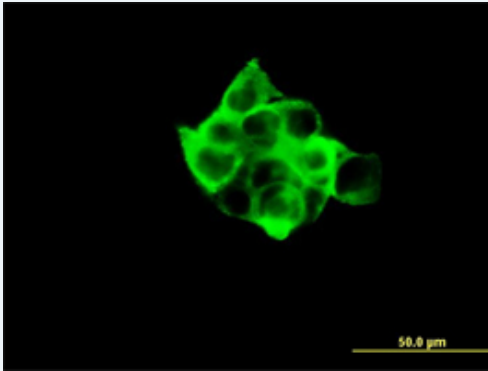
RPS6KB1 monoclonal antibody (M03), clone 2C2. Western Blot analysis of RPS6KB1 expression in NIH/3T3(Cat # L018V1).


 [Protocol Download](#)

Western Blot (Recombinant protein)


 [Protocol Download](#)

Immunofluorescence

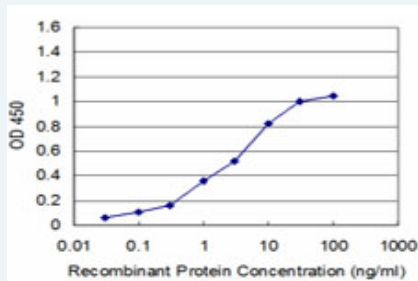


 [enlarge this image](#)

Immunofluorescence of monoclonal antibody to RPS6KB1 on A-431 cell. [antibody concentration 10 ug/ml]

 [Protocol Download](#)

Sandwich ELISA (Recombinant protein)



Detection limit for recombinant GST tagged RPS6KB1 is approximately 0.1ng/ml as a capture antibody.

 [Protocol Download](#)

ELISA

Gene Information

Entrez GeneID: [6198](#)

GeneBank [NM_003161](#)

Accession#:

Protein [NP_003152](#)

Accession#:

Gene Name: RPS6KB1

Gene Alias: PS6K,S6K,S6K1,STK14A,p70(S6K)-alpha,p70-S6K,p70-alpha

Gene Description: ribosomal protein S6 kinase, 70kDa, polypeptide 1

Description:

Omim ID: [608938](#)

Gene Ontology: [Hyperlink](#)

Gene Summary: This gene encodes a member of the RSK (ribosomal S6 kinase) family of serine/threonine kinases. This kinase contains 2 non-identical kinase catalytic domains and phosphorylates several residues of the S6 ribosomal protein. The kinase activity of this protein leads to an increase in protein synthesis and cell proliferation. Amplification of the region of DNA encoding this gene and overexpression of this kinase are

seen in some breast cancer cell lines. Alternate translational start sites have been described and alternate transcriptional splice variants have been observed but have not been thoroughly characterized. [provided by RefSeq]

Other Designations: p70 S6 kinase, alpha 1, p70 S6 kinase, alpha 2, ribosomal protein S6 kinase, 70kD, polypeptide 1, serine/threonine kinase 14 alpha

Gene Pathway

[Acute myeloid leukemia](#) [ErbB signaling pathway](#) [Fc gamma R-mediated phagocytosis](#)
[Insulin signaling pathway](#) [mTOR signaling pathway](#) [TGF-beta signaling pathway](#)

Related Disease

[Cardiovascular Diseases](#) [Diabetes Mellitus, Type 2](#) [Edema](#) [Head and Neck Neoplasms](#)
[Neoplasm Recurrence, Local](#) [Neoplasms, Second Primary](#)

[服務條款](#) | [隱私權政策](#) | [著作及商標](#) | [網站地圖](#)

©2016 亞諾法生技股份有限公司 Abnova Corporation. 版權所有.