



SZABO SCANDIC

Part of Europa Biosite

Produktinformation



Forschungsprodukte & Biochemikalien



Zellkultur & Verbrauchsmaterial



Diagnostik & molekulare Diagnostik



Laborgeräte & Service

Weitere Information auf den folgenden Seiten!
See the following pages for more information!



Lieferung & Zahlungsart

siehe unsere [Liefer- und Versandbedingungen](#)

Zuschläge

- Mindermengenzuschlag
- Trockeneiszuschlag
- Gefahrgutzuschlag
- Expressversand

SZABO-SCANDIC HandelsgmbH

Quellenstraße 110, A-1100 Wien

T. +43(0)1 489 3961-0

F. +43(0)1 489 3961-7

mail@szabo-scandic.com

www.szabo-scandic.com

[linkedin.com/company/szaboscandic](https://www.linkedin.com/company/szaboscandic) 

RPS6KB2 purified MaxPab mouse polyclonal antibody (B02P) MaxPab®

Catalog # : H00006199-B02P

規格 : [50 ug]

[List All](#)

Specification

Product Description: Mouse polyclonal antibody raised against a full-length human RPS6KB2 protein.

Immunogen: RPS6KB2 (AAH06106.3, 1 a.a. ~ 482 a.a) full-length human protein.

Sequence:
 MAAVFDLDLETEEGSEGEPELSPADACPLAELRAAGLEPVGHYEEVE
 LTETSVNVGPERIGPHSFELLRVLGKGGYGKVFQVRKVQGTNLGKIYAM
 KVLRKAKIVRNAKDTAHTRAERNILESVKHPFIVELAYAFQTGGKLYLILEC
 LSGGELFTHLEREGIFLEDTACFYLAEITLALGHLHSQGIYRDLKPENIML
 SSQGHIKLTDFGLCKESIHEGAVTHTFCGTIEYMAPEILVRSGHNRAVDW
 WSLGALMYDMLTGSPFFTAENRKKTMDKIIRGKLALPPYLTPDARDLVKK
 FLKRNPQRIGGGPGDAADVQRHPFFRHMNWDDLAWRVDPPFRPCL
 QSEEDVVSQFDTRFTRQTPVDSPDDTALSESANQAFLGFTYVAPSVLDSI
 KEGFSFQPKLRSPRRLNSSPRAPVSPLKFSPEGFSPSPSLPEPTELPL
 PLLPPPPSTTAPLPIRPPSGTKKSKRGRGRPRGR

Host: Mouse

Reactivity: Human

Quality Control Testing: Antibody reactive against mammalian transfected lysate.

Storage Buffer: In 1x PBS, pH 7.4

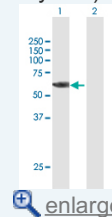
Storage Instruction: Store at -20°C or lower. Aliquot to avoid repeated freezing and thawing.

MSDS:  [Download](#)

Datasheet:  [Download](#)

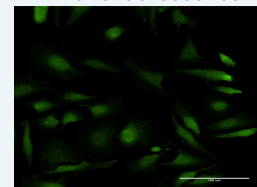
Application Image

Western Blot (Transfected lysate)



 [enlarge](#)

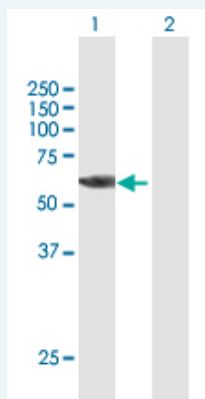
Immunofluorescence



 [enlarge](#)

Applications

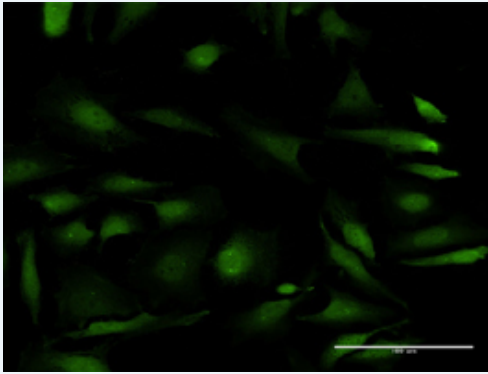
Western Blot (Transfected lysate)



Western Blot analysis of RPS6KB2 expression in transfected 293T cell line ([H00006199-T01](#)) by RPS6KB2 MaxPab polyclonal antibody.

Lane 1: RPS6KB2 transfected lysate(53.02 KDa).
 Lane 2: Non-transfected lysate.

Immunofluorescence



 enlarge this image

Immunofluorescence of purified MaxPab antibody to RPS6KB2 on HeLa cell. [antibody concentration 10 ug/ml]

Gene Information

Entrez GeneID: [6199](#)

GeneBank Accession#: [BC006106.1](#)

Protein Accession#: [AAH06106.3](#)

Gene Name: RPS6KB2

Gene Alias: KLS,P70-beta,P70-beta-1,P70-beta-2,S6K-beta2,S6K2,SRK,STK14B,p70(S6K)-beta,p70S6Kb

Gene Description: ribosomal protein S6 kinase, 70kDa, polypeptide 2

Omim ID: [608939](#)

Gene Ontology: [Hyperlink](#)

Gene Summary: This gene encodes a member of the RSK (ribosomal S6 kinase) family of serine/threonine kinases. This kinase contains 2 nonidentical kinase catalytic domains and phosphorylates the S6 ribosomal protein and eucaryotic translation initiation factor 4B (eIF4B). Phosphorylation of S6 leads to an increase in protein synthesis and cell proliferation. [provided by RefSeq]

Other Designations: S6 kinase-related kinase,p70 ribosomal S6 kinase beta,ribosomal protein S6 kinase, 70kD, polypeptide 2,serine/threonine-protein kinase 14 beta

Gene Pathway

[Acute myeloid leukemia ErbB signaling pathway](#) [Fc gamma R-mediated phagocytosis](#)
[Insulin signaling pathway](#) [mTOR signaling pathway](#) [TGF-beta signaling pathway](#)

Related Disease

[Head and Neck Neoplasms](#) [Neoplasm Recurrence, Local](#) [Neoplasms, Second Primary](#)