



# SZABO SCANDIC

Part of Europa Biosite

## Produktinformation



Forschungsprodukte & Biochemikalien



Zellkultur & Verbrauchsmaterial



Diagnostik & molekulare Diagnostik



Laborgeräte & Service

Weitere Information auf den folgenden Seiten!  
See the following pages for more information!



### Lieferung & Zahlungsart

siehe unsere [Liefer- und Versandbedingungen](#)

### Zuschläge

- Mindermengenzuschlag
- Trockeneiszuschlag
- Gefahrgutzuschlag
- Expressversand

### SZABO-SCANDIC HandelsgmbH

Quellenstraße 110, A-1100 Wien

T. +43(0)1 489 3961-0

F. +43(0)1 489 3961-7

[mail@szabo-scandic.com](mailto:mail@szabo-scandic.com)

[www.szabo-scandic.com](http://www.szabo-scandic.com)

[linkedin.com/company/szaboscandic](https://www.linkedin.com/company/szaboscandic) 

## RPS6KB2 purified MaxPab rabbit polyclonal antibody (D01P) MaxPab®

Catalog # : H00006199-D02P

規格 : [ 100 ug ]

[List All](#)

### Specification

**Product Description:** Rabbit polyclonal antibody raised against a full-length human RPS6KB2 protein.

**Immunogen:** RPS6KB2 (AAH06106.3, 1 a.a. ~ 482 a.a) full-length human protein.

**Sequence:**  
 MAAVFDLDLETEEGSEGEPELSPADACPLAELRAAGLEPVGHYEEVE  
 LTETSVNVGPERIGPHSFELLRVLGKGGYGKVFQVRKVQGTNLGKIYAM  
 KVLRKAKIVRNAKDTAHTRAERNILESVKHPFIVELAYAFQTGGKLYLILEC  
 LSGGELFTHLEREGIFLEDTACFYLAEITLALGHLHSQGIYRDLKPENIML  
 SSQGHIKLTDFGLCKESIHEGAVTHTFCGTIEYMAPEILVRSGHNRAVDW  
 WSLGALMYDMLTGSPFFTAENRKKTMDKIIRGKLALPPYLTPDARDLVKK  
 FLKRNPQRIGGGPGDAADVQRHPFFRHMNWDDLAWRVDPPFRPCL  
 QSEEDVSQFDTRFTRQTPVDSPDDTALSESANQAF LGFTYVAPSVLDSI  
 KEGFSFQPKLRSPRRLNSSPRAPVSPLKFSPEGFRPSPSLPEPTELPL  
 PLLPPPPSTTAPLPIRPPSGTKKSKRGRGRPRGR

**Host:** Rabbit

**Reactivity:** Human

**Quality Control Testing:** Antibody reactive against mammalian transfected lysate.

**Storage Buffer:** In 1x PBS, pH 7.4

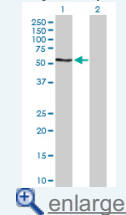
**Storage Instruction:** Store at -20°C or lower. Aliquot to avoid repeated freezing and thawing.


**MSDS:**  [Download](#)

**Datasheet:**  [Download](#)

### Application Image

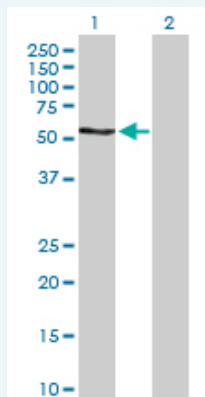
Western Blot (Transfected lysate)



 enlarge

### Applications

Western Blot (Transfected lysate)



Western Blot analysis of RPS6KB2 expression in transfected 293T cell line ([H00006199-T02](#)) by RPS6KB2 MaxPab polyclonal antibody.

Lane 1: RPS6KB2 transfected lysate(53.40 KDa).  
 Lane 2: Non-transfected lysate.

**Gene Information**

**Entrez GeneID:** [6199](#)

**GeneBank Accession#:** [BC006106.1](#)

**Protein Accession#:** [AAH06106.3](#)

**Gene Name:** RPS6KB2

**Gene Alias:** KLS,P70-beta,P70-beta-1,P70-beta-2,S6K-beta2,S6K2,SRK,STK14B,p70(S6K)-beta,p70S6Kb

**Gene Description:** ribosomal protein S6 kinase, 70kDa, polypeptide 2

**Omim ID:** [608939](#)

**Gene Ontology:** [Hyperlink](#)

**Gene Summary:** This gene encodes a member of the RSK (ribosomal S6 kinase) family of serine/threonine kinases. This kinase contains 2 nonidentical kinase catalytic domains and phosphorylates the S6 ribosomal protein and eucaryotic translation initiation factor 4B (eIF4B). Phosphorylation of S6 leads to an increase in protein synthesis and cell proliferation. [provided by RefSeq]

**Other Designations:** S6 kinase-related kinase,p70 ribosomal S6 kinase beta,ribosomal protein S6 kinase, 70kD, polypeptide 2,serine/threonine-protein kinase 14 beta

**Gene Pathway**

[Acute myeloid leukemia](#) [ErbB signaling pathway](#) [Fc gamma R-mediated phagocytosis](#)  
[Insulin signaling pathway](#) [mTOR signaling pathway](#) [TGF-beta signaling pathway](#)

**Related Disease**

[Head and Neck Neoplasms](#) [Neoplasm Recurrence, Local](#) [Neoplasms, Second Primary](#)