



# SZABO SCANDIC

Part of Europa Biosite

## Produktinformation



Forschungsprodukte & Biochemikalien



Zellkultur & Verbrauchsmaterial



Diagnostik & molekulare Diagnostik



Laborgeräte & Service

Weitere Information auf den folgenden Seiten!  
See the following pages for more information!



### Lieferung & Zahlungsart

siehe unsere [Liefer- und Versandbedingungen](#)

### Zuschläge

- Mindermengenzuschlag
- Trockeneiszuschlag
- Gefahrgutzuschlag
- Expressversand

### SZABO-SCANDIC HandelsgmbH

Quellenstraße 110, A-1100 Wien

T. +43(0)1 489 3961-0

F. +43(0)1 489 3961-7

[mail@szabo-scandic.com](mailto:mail@szabo-scandic.com)

[www.szabo-scandic.com](http://www.szabo-scandic.com)

[linkedin.com/company/szaboscandic](https://www.linkedin.com/company/szaboscandic) 

## RPS7 monoclonal antibody (M03), clone 3G4

Catalog # : H00006201-M03

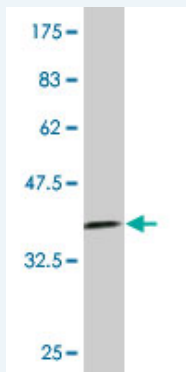
規格 : [ 100 ug ]

[List All](#)

### Specification

<b>Product Description:</b>	Mouse monoclonal antibody raised against a partial recombinant RPS7.
<b>Immunogen:</b>	RPS7 (NP_001002, 95 a.a. ~ 194 a.a) partial recombinant protein with GST tag. MW of the GST tag alone is 26 KDa.
<b>Sequence:</b>	IAQRRLPKPTRKSRKTKNKQKRPRSRTLTAVHDAILEDLVFPSEIVGKRIRVKLDGSRLIKVHLDKAQQNNVEHKVETFSGVYKCLTGKDVNFEFPEFQL
<b>Host:</b>	Mouse
<b>Reactivity:</b>	Human, Mouse, Rat
<b>Isotype:</b>	IgG1 Kappa

**Quality Control Testing:** Antibody Reactive Against Recombinant Protein.



Western Blot detection against Immunogen (36.74 KDa) .

**Storage Buffer:** In 1x PBS, pH 7.4

**Storage Instruction:** Store at -20°C or lower. Aliquot to avoid repeated freezing and thawing.

**MSDS:** [Download](#)

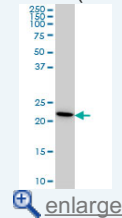
**Datasheet:** [Download](#)

### Applications

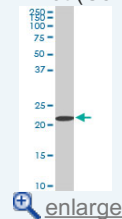
Western Blot (Cell lysate)

### Application Image

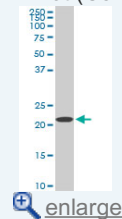
Western Blot (Cell lysate)



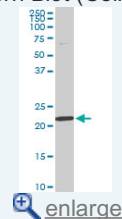
Western Blot (Cell lysate)



Western Blot (Cell lysate)

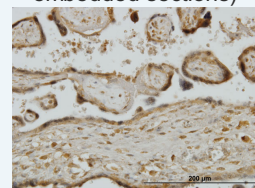


Western Blot (Cell lysate)

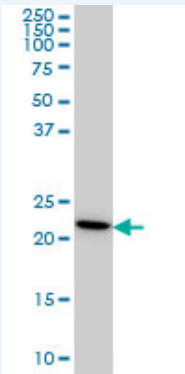


Western Blot (Recombinant protein)

Immunohistochemistry (Formalin/PFA-fixed paraffin-embedded sections)

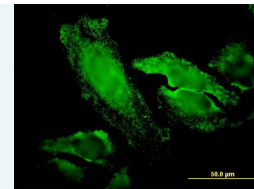


Immunofluorescence



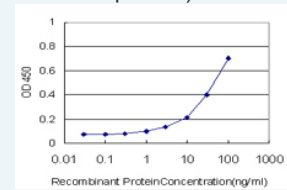
RPS7 monoclonal antibody (M03), clone 3G4 Western Blot analysis of RPS7 expression in HeLa ( Cat # L013V1 ).

[Protocol Download](#)



[enlarge](#)

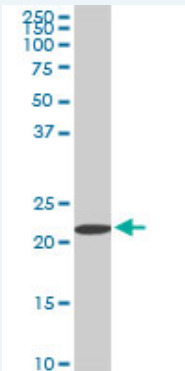
Sandwich ELISA (Recombinant protein)



[enlarge](#)

ELISA

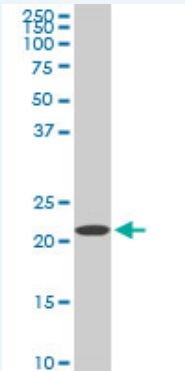
**Western Blot (Cell lysate)**



RPS7 monoclonal antibody (M03), clone 3G4. Western Blot analysis of RPS7 expression in PC-12 ( Cat # L012V1 ).

[Protocol Download](#)

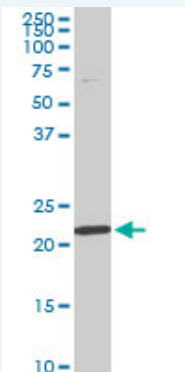
**Western Blot (Cell lysate)**



RPS7 monoclonal antibody (M03), clone 3G4. Western Blot analysis of RPS7 expression in Raw 264.7 ( Cat # L024V1 ).

[Protocol Download](#)


**Western Blot (Cell lysate)**



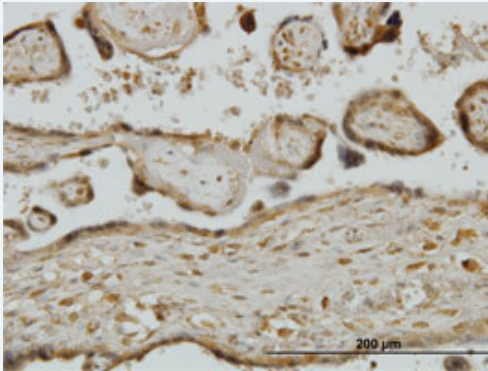
RPS7 monoclonal antibody (M03), clone 3G4. Western Blot analysis of RPS7 expression in NIH/3T3 ( Cat # L018V1 ).


 [Protocol Download](#)

### Western Blot (Recombinant protein)

 [Protocol Download](#)

### Immunohistochemistry (Formalin/PFA-fixed paraffin-embedded sections)

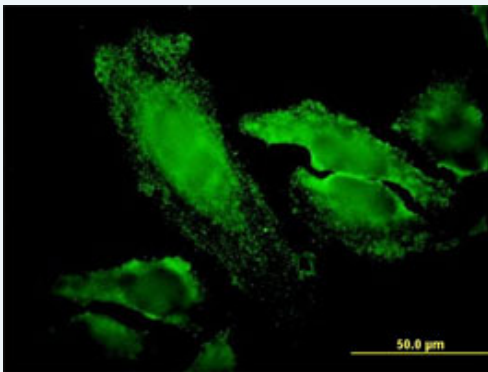


 [enlarge this image](#)

Immunoperoxidase of monoclonal antibody to RPS7 on formalin-fixed paraffin-embedded human placenta. [antibody concentration 3 ug/ml]


 [Protocol Download](#)

### Immunofluorescence

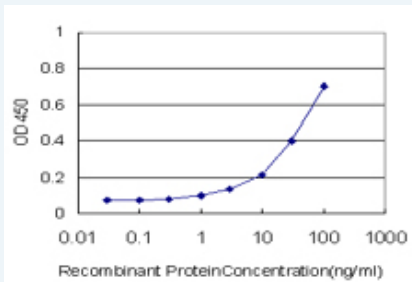


 [enlarge this image](#)

Immunofluorescence of monoclonal antibody to RPS7 on HeLa cell. [antibody concentration 20 ug/ml]

 [Protocol Download](#)

### Sandwich ELISA (Recombinant protein)



Detection limit for recombinant GST tagged RPS7 is approximately 1ng/ml as a capture antibody.

 [Protocol Download](#)

### ELISA

#### Gene Information

Entrez GeneID: [6201](#)

GeneBank Accession#: [NM\\_001011](#)

Protein Accession#: [NP\\_001002](#)

**Gene Name:** RPS7

**Gene Alias:** -

**Gene Description:** ribosomal protein S7

**Omim ID:** [603658](#)

**Gene Ontology:** [Hyperlink](#)

**Gene Summary:** Ribosomes, the organelles that catalyze protein synthesis, consist of a small 40S subunit and a large 60S subunit. Together these subunits are composed of 4 RNA species and approximately 80 structurally distinct proteins. This gene encodes a ribosomal protein that is a component of the 40S subunit. The protein belongs to the S7E family of ribosomal proteins. It is located in the cytoplasm. As is typical for genes encoding ribosomal proteins, there are multiple processed pseudogenes of this gene dispersed through the genome. [provided by RefSeq]

**Other Designations:** 40S ribosomal protein S7

#### Gene Pathway

[Ribosome](#)

[服務條款](#) | [隱私權政策](#) | [著作及商標](#) | [網站地圖](#)

©2016 亞諾法生技股份有限公司 Abnova Corporation. 版權所有.