



SZABO SCANDIC

Part of Europa Biosite

Produktinformation



Forschungsprodukte & Biochemikalien



Zellkultur & Verbrauchsmaterial



Diagnostik & molekulare Diagnostik



Laborgeräte & Service

Weitere Information auf den folgenden Seiten!
See the following pages for more information!



Lieferung & Zahlungsart

siehe unsere [Liefer- und Versandbedingungen](#)

Zuschläge

- Mindermengenzuschlag
- Trockeneiszuschlag
- Gefahrgutzuschlag
- Expressversand

SZABO-SCANDIC HandelsgmbH

Quellenstraße 110, A-1100 Wien

T. +43(0)1 489 3961-0

F. +43(0)1 489 3961-7

mail@szabo-scandic.com

www.szabo-scandic.com

[linkedin.com/company/szaboscandic](https://www.linkedin.com/company/szaboscandic) 

RPS11 polyclonal antibody (A01)

Catalog # : H00006205-A01

規格 : [50 uL]

List All

Specification

Product Description: Mouse polyclonal antibody raised against a partial recombinant RPS11.

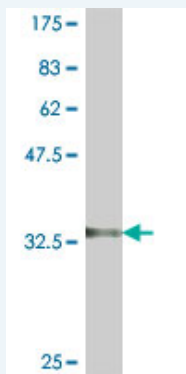
Immunogen: RPS11 (NP_001006, 59 a.a. ~ 158 a.a) partial recombinant protein with GST tag.

Sequence: KCPFTGNVSIRGRILSGVWTKMKMQRTIVIRRDYLHYIRKYNRFEKRHKNM SVHLSPCFRDVQIGDIVTVGECRPLSKTVRFNVLKVTKAAGTKKQFQKF

Host: Mouse

Reactivity: Human

Quality Control Testing: Antibody Reactive Against Recombinant Protein.



Western Blot detection against Immunogen (37.11 kDa) .

Storage Buffer: 50 % glycerol

Storage Instruction: Store at -20°C or lower. Aliquot to avoid repeated freezing and thawing.

MSDS: [Download](#)

Datasheet: [Download](#)

Applications

Western Blot (Recombinant protein)

[Protocol Download](#)

ELISA

Gene Information

Entrez GeneID: [6205](#)

GeneBank Accession#: [NM_001015](#)

Application Image

Western Blot (Recombinant protein)

ELISA

Protein [NP_001006](#)

Accession#:

Gene Name: RPS11

Gene Alias: -

Gene ribosomal protein S11

Description:

Omim ID: [180471](#)

Gene Ontology: [Hyperlink](#)

Gene Summary: Ribosomes, the organelles that catalyze protein synthesis, consist of a small 40S subunit and a large 60S subunit. Together these subunits are composed of 4 RNA species and approximately 80 structurally distinct proteins. This gene encodes a ribosomal protein that is a component of the 40S subunit. The protein belongs to the S17P family of ribosomal proteins. It is located in the cytoplasm. The gene product of the E. coli ortholog (ribosomal protein S17) is thought to be involved in the recognition of termination codons. This gene is co-transcribed with a small nucleolar RNA gene, which is located in its third intron. As is typical for genes encoding ribosomal proteins, there are multiple processed pseudogenes of this gene dispersed through the genome. [provided by RefSeq]

Other 40S ribosomal protein S11

Designations:

Gene Pathway

[Ribosome](#)