



# SZABO SCANDIC

Part of Europa Biosite

## Produktinformation



Forschungsprodukte & Biochemikalien



Zellkultur & Verbrauchsmaterial



Diagnostik & molekulare Diagnostik



Laborgeräte & Service

Weitere Information auf den folgenden Seiten!  
See the following pages for more information!



### Lieferung & Zahlungsart

siehe unsere [Liefer- und Versandbedingungen](#)

### Zuschläge

- Mindermengenzuschlag
- Trockeneiszuschlag
- Gefahrgutzuschlag
- Expressversand

### SZABO-SCANDIC HandelsgmbH

Quellenstraße 110, A-1100 Wien

T. +43(0)1 489 3961-0

F. +43(0)1 489 3961-7

[mail@szabo-scandic.com](mailto:mail@szabo-scandic.com)

[www.szabo-scandic.com](http://www.szabo-scandic.com)

[linkedin.com/company/szaboscandic](https://www.linkedin.com/company/szaboscandic) 

## RPS17 polyclonal antibody (A01)

Catalog # : H00006218-A01

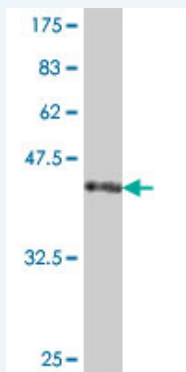
規格 : [ 50 uL ]

List All

### Specification

<b>Product Description:</b>	Mouse polyclonal antibody raised against a full-length recombinant RPS17.
<b>Immunogen:</b>	RPS17 (AAH09407, 1 a.a. ~ 135 a.a) full-length recombinant protein with GST tag.
<b>Sequence:</b>	MGRVRTKTVKKAARVIEKYYTRLGNDFHTNKRVCCEEI AIPSKKLRNKIAG YVTHLMKRIQRG PVRGISIKLQEEERERRDNYVPEVSALDQEIIEVDPDTK EMLKLLDFGSLSNLQVTQPTVGMNFKTPRGPV
<b>Host:</b>	Mouse
<b>Reactivity:</b>	Human

**Quality Control Testing:** Antibody Reactive Against Recombinant Protein.



Western Blot detection against Immunogen (40.96 KDa) .

**Storage Buffer:** 50 % glycerol

**Storage Instruction:** Store at -20°C or lower. Aliquot to avoid repeated freezing and thawing.

**MSDS:** [Download](#)

**Datasheet:** [Download](#)

### Applications

**Western Blot (Recombinant protein)**

[Protocol Download](#)

**ELISA**

### Gene Information

**Entrez GeneID:** [6218](#)

**GeneBank Accession#:** [BC009407](#)

**Protein Accession#:** [AAH09407](#)

**Gene Name:** RPS17

**Gene Alias:** DBA4,MGC72007,RPS17L1,RPS17L2

**Gene Description:** ribosomal protein S17

**Omim ID:** [180472](#)

**Gene Ontology:** [Hyperlink](#)

**Gene Summary:** Ribosomes, the organelles that catalyze protein synthesis, consist of a small 40S subunit and a large 60S subunit. Together these subunits are composed of 4 RNA species and approximately 80 structurally distinct proteins. This gene encodes a ribosomal protein that is a component of the 40S subunit. The protein belongs to the S17E family of ribosomal proteins. It is located in the cytoplasm. As is typical for genes encoding ribosomal proteins, there are multiple processed pseudogenes of this gene dispersed through the genome. [provided by RefSeq]

**Other Designations:** 40S ribosomal protein S17

#### Gene Pathway

[Ribosome](#)