



SZABO SCANDIC

Part of Europa Biosite

Produktinformation



Forschungsprodukte & Biochemikalien



Zellkultur & Verbrauchsmaterial



Diagnostik & molekulare Diagnostik



Laborgeräte & Service

Weitere Information auf den folgenden Seiten!
See the following pages for more information!



Lieferung & Zahlungsart

siehe unsere [Liefer- und Versandbedingungen](#)

Zuschläge

- Mindermengenzuschlag
- Trockeneiszuschlag
- Gefahrgutzuschlag
- Expressversand

SZABO-SCANDIC HandelsgmbH

Quellenstraße 110, A-1100 Wien

T. +43(0)1 489 3961-0

F. +43(0)1 489 3961-7

mail@szabo-scandic.com

www.szabo-scandic.com

[linkedin.com/company/szaboscandic](https://www.linkedin.com/company/szaboscandic) 

RPS19 monoclonal antibody (M01), clone 3C6

Catalog # : H00006223-M01

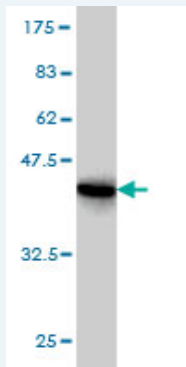
規格 : [100 ug]

[List All](#)

Specification

Product Description:	Mouse monoclonal antibody raised against a full length recombinant RPS19.
Immunogen:	RPS19 (AAH00023, 1 a.a. ~ 145 a.a) full-length recombinant protein with GST tag. MW of the GST tag alone is 26 KDa.
Sequence:	MPGVTVKDVNQEFVRLAFLKKSGLKVPPEWVDTVKLAKHKELAPY DENWFYTRAASTARHLYLRGGAGVGSMTKIYGGRQRNGVMPSHF SRG SKSVARRVLQALEGLKMVEKDQDGGRLTPQGQRDLDRAGQVAAANK KH
Host:	Mouse
Reactivity:	Human
Isotype:	IgG2b Kappa

Quality Control Testing: Antibody Reactive Against Recombinant Protein.



Western Blot detection against Immunogen (41.69 KDa) .

Storage Buffer: In 1x PBS, pH 7.4

Storage Instruction: Store at -20°C or lower. Aliquot to avoid repeated freezing and thawing.

MSDS: [Download](#)

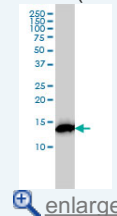
Datasheet: [Download](#)

Publication Reference

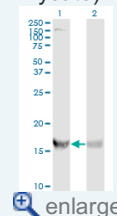
- [Dissecting the transcriptional phenotype of ribosomal protein deficiency: implications for Diamond-Blackfan Anemia.](#)
Aspesi A, Pavesi E, Robotti E, Crescitelli R, Boria I, Avondo F, Moniz H, Da Costa L, Mohandas N, Roncaglia P, Ramenghi U, Ronchi A, Gustincich S, Merlin S, Marengo E, Ellis SR, Follenzi A, Santoro C, Dianzani UG. 2014 Jul 25;545(2):282-9. doi: 10.1016/j.gene.2014.04.077. Epub 2014 May 15.
- [p53-Independent Cell Cycle and Erythroid Differentiation Defects in Murine Embryonic Stem Cells Haploinsufficient for Diamond Blackfan Anemia-Proteins: RPS19 versus RPL5.](#)

Application Image

Western Blot (Cell lysate)



Western Blot (Transfected lysate)



Western Blot (Recombinant protein)

Sandwich ELISA (Recombinant protein)

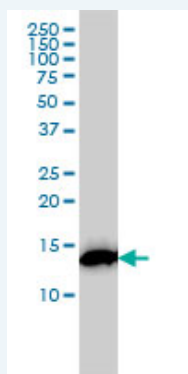
ELISA

Singh SA, Goldberg TA, Henson AL, Husain-Krautter S, Nihrane A, Blanc L, Ellis SR, Lipton JM, Liu JMPLoS One. 2014 Feb 18;9(2):e89098. doi: 10.1371/journal.pone.0089098. eCollection 2014.

3. Differential proteomic analysis in human cells subjected to ribosomal stress.
Caterino M, Corbo C, Imperlini E, Armiraglio M, Pavesi E, Aspesi A, Loreni F, Dianzani I, Ruoppolo MProteomics. 2013 Feb 15. doi: 10.1002/pmic.201200242.
4. Impaired growth, hematopoietic colony formation, and ribosome maturation in human cells depleted of Shwachman-Diamond syndrome protein SBDS.
Sezgin G, Henson AL, Nihrane A, Singh S, Wattenberg M, Alard P, Ellis SR, Liu JM.Pediatr Blood Cancer. 2012 Sep 19. doi: 10.1002/pbc.24300.
5. Enhanced alternative splicing of the FLVCR1 gene in Diamond Blackfan anemia disrupts FLVCR1 expression and function that are critical for erythropoiesis.
Rey MA, Duffy SP, Brown JK, Kennedy JA, Dick JE, Dror Y, Tailor CS.Haematologica. 2008 Nov;93(11):1617-26. Epub 2008 Sep 24.

Applications

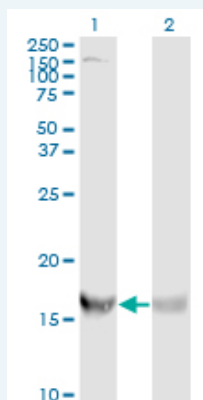
Western Blot (Cell lysate)



RPS19 monoclonal antibody (M01), clone 3C6 Western Blot analysis of RPS19 expression in K-562 (Cat # L009V1).

 [Protocol Download](#)

Western Blot (Transfected lysate)



Western Blot analysis of RPS19 expression in transfected 293T cell line by RPS19 monoclonal antibody (M01), clone 3C6.

Lane 1: RPS19 transfected lysate(16.1 kDa).

Lane 2: Non-transfected lysate.

 [Protocol Download](#)

Western Blot (Recombinant protein)

 [Protocol Download](#)

Sandwich ELISA (Recombinant protein)

Detection limit for recombinant GST tagged RPS19 is approximately 10ng/ml as a capture antibody.

 [Protocol Download](#)

ELISA

Gene Information

Entrez GeneID: [6223](#)

**GeneBank
Accession#:** [BC000023](#)

**Protein
Accession#:** [AAH00023](#)

Gene Name: RPS19

Gene Alias: DBA

**Gene
Description:** ribosomal protein S19

Omim ID: [105650](#), [603474](#)

Gene Ontology: [Hyperlink](#)

Gene Summary: Ribosomes, the organelles that catalyze protein synthesis, consist of a small 40S subunit and a large 60S subunit. Together these subunits are composed of 4 RNA species and approximately 80 structurally distinct proteins. This gene encodes a ribosomal protein that is a component of the 40S subunit. The protein belongs to the S19E family of ribosomal proteins. It is located in the cytoplasm. Mutations in this gene cause Diamond-Blackfan anemia (DBA), a constitutional erythroblastopenia characterized by absent or decreased erythroid precursors, in a subset of patients. This suggests a possible extra-ribosomal function for this gene in erythropoietic differentiation and proliferation, in addition to its ribosomal function. Higher expression levels of this gene in some primary colon carcinomas compared to matched normal colon tissues has been observed. As is typical for genes encoding ribosomal proteins, there are multiple processed pseudogenes of this gene dispersed through the genome. [provided by RefSeq]

**Other
Designations:** 40S ribosomal protein S19, Diamond-Blackfan anemia

Gene Pathway

[Ribosome](#)

Related Disease

[Anemia, Diamond-Blackfan](#) [Cardiovascular Diseases](#) [Diabetes Mellitus, Type 2](#) [Edema](#)
[Genetic Predisposition to Disease](#) [Hematologic Diseases](#) [Multiple Myeloma](#)
[Occupational Diseases](#)