



# SZABO SCANDIC

Part of Europa Biosite

## Produktinformation



Forschungsprodukte & Biochemikalien



Zellkultur & Verbrauchsmaterial



Diagnostik & molekulare Diagnostik



Laborgeräte & Service

Weitere Information auf den folgenden Seiten!  
See the following pages for more information!



### Lieferung & Zahlungsart

siehe unsere [Liefer- und Versandbedingungen](#)

### Zuschläge

- Mindermengenzuschlag
- Trockeneiszuschlag
- Gefahrgutzuschlag
- Expressversand

### SZABO-SCANDIC HandelsgmbH

Quellenstraße 110, A-1100 Wien

T. +43(0)1 489 3961-0

F. +43(0)1 489 3961-7

[mail@szabo-scandic.com](mailto:mail@szabo-scandic.com)

[www.szabo-scandic.com](http://www.szabo-scandic.com)

[linkedin.com/company/szaboscandic](https://www.linkedin.com/company/szaboscandic) 



## RPS20 monoclonal antibody (M03), clone 1G12

Catalog # : H00006224-M03

規格 : [ 100 ug ]

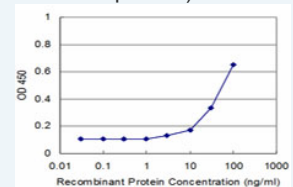
[List All](#)


### Specification

<b>Product Description:</b>	Mouse monoclonal antibody raised against a full-length recombinant RPS20.
<b>Immunogen:</b>	RPS20 (AAH07507, 1 a.a. ~ 119 a.a) full-length recombinant protein with GST tag. MW of the GST tag alone is 26 KDa.
<b>Sequence:</b>	MAFKDTGKTPVEPEVAIHRIRITLTSRNVKSLEKVCADLIRGAKEKNLKVK GPVRMPTKLRITTRKTPCGEGSKTWDRFQMRIHKRLIDLHSPSEIVKQIT SISIEPGVEVEVTIADA
<b>Host:</b>	Mouse
<b>Reactivity:</b>	Human
<b>Isotype:</b>	IgG2a Kappa
<b>Quality Control Testing:</b>	Antibody Reactive Against Recombinant Protein.
<b>Storage Buffer:</b>	In 1x PBS, pH 7.4
<b>Storage Instruction:</b>	Store at -20°C or lower. Aliquot to avoid repeated freezing and thawing.
<b>MSDS:</b>	 <a href="#">Download</a>
<b>Datasheet:</b>	 <a href="#">Download</a>

### Application Image

Sandwich ELISA (Recombinant protein)

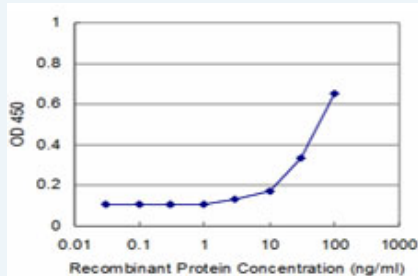


 [enlarge](#)


ELISA

### Applications

Sandwich ELISA (Recombinant protein)



Detection limit for recombinant GST tagged RPS20 is approximately 3ng/ml as a capture antibody.

 [Protocol Download](#)

ELISA

### Gene Information

Entrez GeneID: [6224](#)

GeneBank [BC007507](#)

**Accession#:****Protein** [AAH07507](#)**Accession#:****Gene Name:** RPS20**Gene Alias:** FLJ27451,MGC102930**Gene** ribosomal protein S20**Description:****Omim ID:** [603682](#)**Gene Ontology:** [Hyperlink](#)

**Gene Summary:** Ribosomes, the organelles that catalyze protein synthesis, consist of a small 40S subunit and a large 60S subunit. Together these subunits are composed of 4 RNA species and approximately 80 structurally distinct proteins. This gene encodes a ribosomal protein that is a component of the 40S subunit. The protein belongs to the S10P family of ribosomal proteins. It is located in the cytoplasm. This gene is co-transcribed with the small nucleolar RNA gene U54, which is located in its second intron. As is typical for genes encoding ribosomal proteins, there are multiple processed pseudogenes of this gene dispersed through the genome. Two transcript variants encoding different isoforms have been identified for this gene. [provided by RefSeq]

**Other** 40S ribosomal protein S20**Designations:****Gene Pathway**[Ribosome](#)**Related Disease**[Diabetes Mellitus, Type 2](#)