



# SZABO SCANDIC

Part of Europa Biosite

## Produktinformation



Forschungsprodukte & Biochemikalien



Zellkultur & Verbrauchsmaterial



Diagnostik & molekulare Diagnostik



Laborgeräte & Service

Weitere Information auf den folgenden Seiten!  
See the following pages for more information!



### Lieferung & Zahlungsart

siehe unsere [Liefer- und Versandbedingungen](#)

### Zuschläge

- Mindermengenzuschlag
- Trockeneiszuschlag
- Gefahrgutzuschlag
- Expressversand

### SZABO-SCANDIC HandelsgmbH

Quellenstraße 110, A-1100 Wien

T. +43(0)1 489 3961-0

F. +43(0)1 489 3961-7

[mail@szabo-scandic.com](mailto:mail@szabo-scandic.com)

[www.szabo-scandic.com](http://www.szabo-scandic.com)

[linkedin.com/company/szaboscandic](https://www.linkedin.com/company/szaboscandic) 

## RRM1 polyclonal antibody (A01)

Catalog # : H00006240-A01

規格 : [ 50 uL ]

List All

### Specification

**Product Description:** Mouse polyclonal antibody raised against a partial recombinant RRM1.

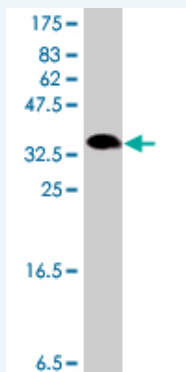
**Immunogen:** RRM1 (NP\_001024, 644 a.a. ~ 753 a.a) partial recombinant protein with GST tag.

**Sequence:** DLTERGLWHEEMKNQIIACNGSIQSIPEIPDDLKQLYKTWWEISQKTVLKMAAERGAFIDQSQSLNIHIAEPNYGKLTSMHFYGWKQGLKTGMYYLRTRPAAANPIQFTLN

**Host:** Mouse

**Reactivity:** Human

**Quality Control Testing:** Antibody Reactive Against Recombinant Protein.



Western Blot detection against Immunogen (38.21 KDa) .

**Storage Buffer:** 50 % glycerol

**Storage Instruction:** Store at -20°C or lower. Aliquot to avoid repeated freezing and thawing.

**MSDS:** [Download](#)

**Datasheet:** [Download](#)

### Applications

**Western Blot (Recombinant protein)**

[Protocol Download](#)

**ELISA**

### Gene Information

**Entrez GeneID:** [6240](#)

**GeneBank Accession#:** [NM\\_001033](#)

### Application Image

Western Blot (Recombinant protein)

ELISA

**Protein Accession#:** [NP\\_001024](#)

**Gene Name:** RRM1

**Gene Alias:** R1,RIR1,RR1

**Gene Description:** ribonucleotide reductase M1

**Omim ID:** [180410](#)

**Gene Ontology:** [Hyperlink](#)

**Gene Summary:** This gene encodes one of two non-identical subunits that constitute ribonucleoside-diphosphate reductase, an enzyme essential for the production of deoxyribonucleotides prior to DNA synthesis in S phase of dividing cells. It is one of several genes located in the imprinted gene domain of 11p15.5, an important tumor-suppressor gene region. Alterations in this region have been associated with the Beckwith-Wiedemann syndrome, Wilms tumor, rhabdomyosarcoma, adrenocortical carcinoma, and lung, ovarian, and breast cancer. This gene may play a role in malignancies and disease that involve this region. [provided by RefSeq]

**Other Designations:** ribonucleoside-diphosphate reductase M1 chain,ribonucleotide reductase M1 polypeptide,ribonucleotide reductase, R1 subunit,ribonucleotide reductase, large subunit

### Gene Pathway

[Glutathione metabolism](#) [Metabolic pathways](#) [Purine metabolism](#) [Pyrimidine metabolism](#)

### Related Disease

[Abortion, Spontaneous](#) [Adenocarcinoma](#) [Breast cancer](#) [Breast Neoplasms](#) [Carcinoma, Large Cell](#) [Carcinoma, Non-Small-Cell Lung](#) [Carcinoma, Pancreatic Ductal](#) [Carcinoma, Squamous Cell](#) [Esophageal Neoplasms](#) [Genetic Predisposition to Disease](#) [Head and Neck Neoplasms](#) [Kidney Failure, Chronic](#) [Lung Neoplasms](#) [Neoplasm Recurrence, Local](#) [Neoplasms, Second Primary](#) [Neutropenia](#) [Pancreatic Neoplasms](#)