



SZABO SCANDIC

Part of Europa Biosite

Produktinformation



Forschungsprodukte & Biochemikalien



Zellkultur & Verbrauchsmaterial



Diagnostik & molekulare Diagnostik



Laborgeräte & Service

Weitere Information auf den folgenden Seiten!
See the following pages for more information!



Lieferung & Zahlungsart

siehe unsere [Liefer- und Versandbedingungen](#)

Zuschläge

- Mindermengenzuschlag
- Trockeneiszuschlag
- Gefahrgutzuschlag
- Expressversand

SZABO-SCANDIC HandelsgmbH

Quellenstraße 110, A-1100 Wien

T. +43(0)1 489 3961-0

F. +43(0)1 489 3961-7

mail@szabo-scandic.com

www.szabo-scandic.com

[linkedin.com/company/szaboscandic](https://www.linkedin.com/company/szaboscandic) 

RRM1 monoclonal antibody (M03), clone 4E4

Catalog # : H00006240-M03

規格 : [100 ug]

[List All](#)

Specification

Product Description: Mouse monoclonal antibody raised against a partial recombinant RRM1.

Immunogen: RRM1 (NP_001024, 644 a.a. ~ 753 a.a) partial recombinant protein with GST tag. MW of the GST tag alone is 26 KDa.

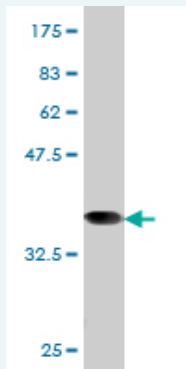
Sequence: DLTERGLWHEEMKNQIIACNGSIQSIPEIPDDLKQLYKTWWEISQKTVLKM
AAERGAFIDQSQSLNIHIAEPNYGKLTSMHFGYWKQGLKGMYYLRTRP
AANPIQFTLN

Host: Mouse

Reactivity: Human

Isotype: IgG2a Kappa

Quality Control Testing: Antibody Reactive Against Recombinant Protein.



Western Blot detection against Immunogen (37.84 KDa) .

Storage Buffer: In 1x PBS, pH 7.4

Storage Instruction: Store at -20°C or lower. Aliquot to avoid repeated freezing and thawing.

MSDS: [Download](#)

Datasheet: [Download](#)

Applications

Western Blot (Recombinant protein)

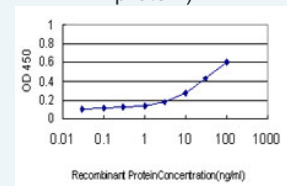
[Protocol Download](#)

Sandwich ELISA (Recombinant protein)

Application Image

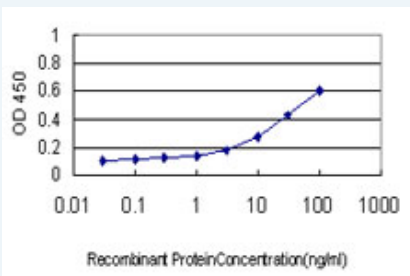
Western Blot (Recombinant protein)

Sandwich ELISA (Recombinant protein)



[enlarge](#)

ELISA



Detection limit for recombinant GST tagged RRM1 is approximately 0.3ng/ml as a capture antibody.

 [Protocol Download](#)

ELISA

Gene Information

Entrez GeneID: [6240](#)

GeneBank [NM_001033](#)

Accession#:

Protein [NP_001024](#)

Accession#:

Gene Name: RRM1

Gene Alias: R1,RIR1,RR1

Gene ribonucleotide reductase M1

Description:

Omim ID: [180410](#)

Gene Ontology: [Hyperlink](#)

Gene Summary: This gene encodes one of two non-identical subunits that constitute ribonucleoside-diphosphate reductase, an enzyme essential for the production of deoxyribonucleotides prior to DNA synthesis in S phase of dividing cells. It is one of several genes located in the imprinted gene domain of 11p15.5, an important tumor-suppressor gene region. Alterations in this region have been associated with the Beckwith-Wiedemann syndrome, Wilms tumor, rhabdomyosarcoma, adrenocortical carcinoma, and lung, ovarian, and breast cancer. This gene may play a role in malignancies and disease that involve this region. [provided by RefSeq]

Other Designations: ribonucleoside-diphosphate reductase M1 chain, ribonucleotide reductase M1 polypeptide, ribonucleotide reductase, R1 subunit, ribonucleotide reductase, large subunit

Gene Pathway

[Glutathione metabolism](#) [Metabolic pathways](#) [Purine metabolism](#) [Pyrimidine metabolism](#)

Related Disease

[Abortion, Spontaneous](#) [Adenocarcinoma Breast cancer](#) [Breast Neoplasms](#) [Carcinoma, Large Cell](#) [Carcinoma, Non-Small-Cell Lung](#) [Carcinoma, Pancreatic Ductal](#) [Carcinoma, Squamous Cell](#) [Esophageal Neoplasms](#) [Genetic Predisposition to Disease](#) [Head and Neck Neoplasms](#) [Kidney Failure, Chronic](#) [Lung Neoplasms](#) [Neoplasm Recurrence, Local](#) [Neoplasms, Second Primary](#) [Neutropenia](#) [Pancreatic Neoplasms](#)

