



SZABO SCANDIC

Part of Europa Biosite

Produktinformation



Forschungsprodukte & Biochemikalien



Zellkultur & Verbrauchsmaterial



Diagnostik & molekulare Diagnostik



Laborgeräte & Service

Weitere Information auf den folgenden Seiten!
See the following pages for more information!



Lieferung & Zahlungsart

siehe unsere [Liefer- und Versandbedingungen](#)

Zuschläge

- Mindermengenzuschlag
- Trockeneiszuschlag
- Gefahrgutzuschlag
- Expressversand

SZABO-SCANDIC HandelsgmbH

Quellenstraße 110, A-1100 Wien

T. +43(0)1 489 3961-0

F. +43(0)1 489 3961-7

mail@szabo-scandic.com

www.szabo-scandic.com

[linkedin.com/company/szaboscandic](https://www.linkedin.com/company/szaboscandic) 

RRM1 monoclonal antibody (M04), clone 1D6

Catalog # : H00006240-M04

規格 : [100 ug]

[List All](#)

Specification

Product Description: Mouse monoclonal antibody raised against a partial recombinant RRM1.

Immunogen: RRM1 (NP_001024.1, 593 a.a. ~ 792 a.a) partial recombinant protein with GST tag. MW of the GST tag alone is 26 KDa.

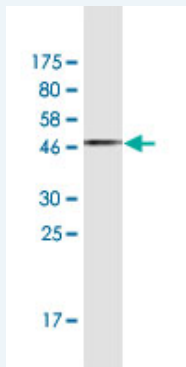
Sequence:
 IRNSLLIAPMPTASTAQILGNNESEIEPYTSNIYTRRVLGSEFQIVNPHLLKDL
 TERGLWHEEMKNQIIACNGSIQSIPEIPDDLKQLYKTVWEISQKTVLKMAA
 ERGAFIDQSQSLNIHIAEPNYGKLTSMHFYGWKQGLKTGMYYLRTRPAA
 NPIQFTLNKEKLDKEKVSKEEEEKERNTAAMVCSLENRDECLMCGS

Host: Mouse

Reactivity: Human, Mouse

Isotype: IgG2a Kappa

Quality Control Testing: Antibody Reactive Against Recombinant Protein.



Western Blot detection against Immunogen (47.41 KDa) .

Storage Buffer: In 1x PBS, pH 7.4

Storage Instruction: Store at -20°C or lower. Aliquot to avoid repeated freezing and thawing.

MSDS: [Download](#)

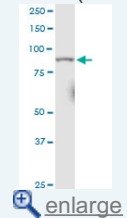
Datasheet: [Download](#)

Applications

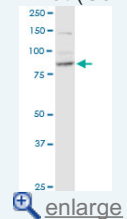
Western Blot (Cell lysate)

Application Image

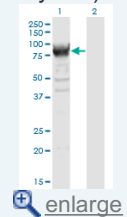
Western Blot (Cell lysate)



Western Blot (Cell lysate)

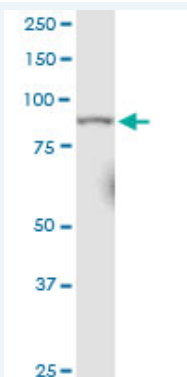


Western Blot (Transfected lysate)



Western Blot (Recombinant protein)

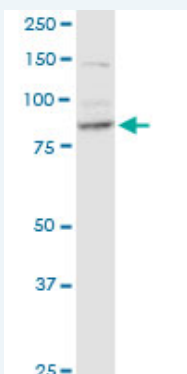
ELISA



RRM1 monoclonal antibody (M04), clone 1D6. Western Blot analysis of RRM1 expression in Raw 264.7.

 [Protocol Download](#)

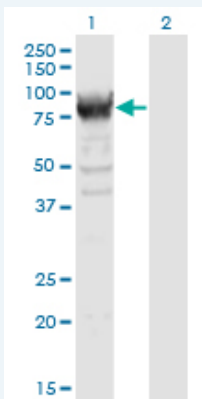
Western Blot (Cell lysate)



RRM1 monoclonal antibody (M04), clone 1D6. Western Blot analysis of RRM1 expression in K-562.

 [Protocol Download](#)


Western Blot (Transfected lysate)




Western Blot analysis of RRM1 expression in transfected 293T cell line by RRM1 monoclonal antibody (M04), clone 1D6.

Lane 1: RRM1 transfected lysate (Predicted MW: 90.1 KDa).

Lane 2: Non-transfected lysate.

 [Protocol Download](#)

Western Blot (Recombinant protein)

 [Protocol Download](#)

ELISA

Gene Information

Entrez GeneID: [6240](#)

GeneBank [NM_001033.2](#)

Accession#:

Protein [NP_001024.1](#)

Accession#:

Gene Name: RRM1

Gene Alias: R1,RIR1,RR1

Gene ribonucleotide reductase M1

Description:

Omim ID: [180410](#)

Gene Ontology: [Hyperlink](#)

Gene Summary: This gene encodes one of two non-identical subunits that constitute ribonucleoside-diphosphate reductase, an enzyme essential for the production of deoxyribonucleotides prior to DNA synthesis in S phase of dividing cells. It is one of several genes located in the imprinted gene domain of 11p15.5, an important tumor-suppressor gene region. Alterations in this region have been associated with the Beckwith-Wiedemann syndrome, Wilms tumor, rhabdomyosarcoma, adrenocrotical carcinoma, and lung, ovarian, and breast cancer. This gene may play a role in malignancies and disease that involve this region. [provided by RefSeq]

Other Designations: ribonucleoside-diphosphate reductase M1 chain,ribonucleotide reductase M1 polypeptide,ribonucleotide reductase, R1 subunit,ribonucleotide reductase, large subunit

Gene Pathway

[Glutathione metabolism](#) [Metabolic pathways](#) [Purine metabolism](#) [Pyrimidine metabolism](#)

Related Disease

[Abortion, Spontaneous Adenocarcinoma](#) [Breast cancer](#) [Breast Neoplasms](#) [Carcinoma, Large Cell](#) [Carcinoma, Non-Small-Cell Lung](#) [Carcinoma, Pancreatic Ductal](#) [Carcinoma, Squamous Cell](#) [Esophageal Neoplasms](#) [Genetic Predisposition to Disease](#) [Head and Neck Neoplasms](#) [Kidney Failure, Chronic](#) [Lung Neoplasms](#) [Neoplasm Recurrence, Local](#) [Neoplasms, Second Primary](#) [Neutropenia](#) [Pancreatic Neoplasms](#)

[服務條款](#) | [隱私權政策](#) | [著作及商標](#) | [網站地圖](#)

©2016 亞諾法生技股份有限公司 Abnova Corporation. 版權所有.