



SZABO SCANDIC

Part of Europa Biosite

Produktinformation



Forschungsprodukte & Biochemikalien



Zellkultur & Verbrauchsmaterial



Diagnostik & molekulare Diagnostik



Laborgeräte & Service

Weitere Information auf den folgenden Seiten!
See the following pages for more information!



Lieferung & Zahlungsart

siehe unsere [Liefer- und Versandbedingungen](#)

Zuschläge

- Mindermengenzuschlag
- Trockeneiszuschlag
- Gefahrgutzuschlag
- Expressversand

SZABO-SCANDIC HandelsgmbH

Quellenstraße 110, A-1100 Wien

T. +43(0)1 489 3961-0

F. +43(0)1 489 3961-7

mail@szabo-scandic.com

www.szabo-scandic.com

[linkedin.com/company/szaboscandic](https://www.linkedin.com/company/szaboscandic) 

RRM1 monoclonal antibody (M05), clone 2E6

Catalog # : H00006240-M05

規格 : [100 ug]

[List All](#)

Specification

Product Description: Mouse monoclonal antibody raised against a partial recombinant RRM1.

Immunogen: RRM1 (NP_001024.1, 593 a.a. ~ 792 a.a) partial recombinant protein with GST tag. MW of the GST tag alone is 26 KDa.

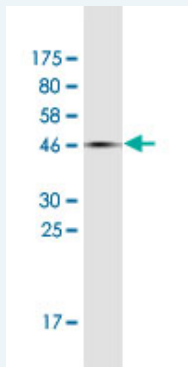
Sequence:
 IRNSLLIAPMPTASTAQILGNNEIEPYTSNIYTRRVLSGEFQIVNPHLLKDL
 TERGLWHEEMKNQIIACNGSIQSIPEIPDDLKQLYKTVWEISQKTVLKMAA
 ERGAFIDQSQSLNIHIAEPNYGKLTSMHFYGWKQGLKTGMYYLRTRPAA
 NPIQFTLNKEKLDKEKVSKEEEEKERNTAAMVCSLENRDECLMCGS

Host: Mouse

Reactivity: Human

Isotype: IgG2a Kappa

Quality Control Testing: Antibody Reactive Against Recombinant Protein.



Western Blot detection against Immunogen (47.41 KDa) .

Storage Buffer: In 1x PBS, pH 7.4

Storage Instruction: Store at -20°C or lower. Aliquot to avoid repeated freezing and thawing.

MSDS: [Download](#)

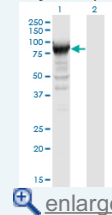
Datasheet: [Download](#)

Applications

Western Blot (Transfected lysate)

Application Image

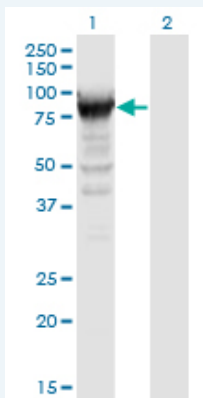
Western Blot (Transfected lysate)



[enlarge](#)


Western Blot (Recombinant protein)

ELISA




Western Blot analysis of RRM1 expression in transfected 293T cell line by RRM1 monoclonal antibody (M05), clone 2E6.

Lane 1: RRM1 transfected lysate (Predicted MW: 90.1 kDa).
Lane 2: Non-transfected lysate.

 [Protocol Download](#)

Western Blot (Recombinant protein)

 [Protocol Download](#)

ELISA

Gene Information

Entrez GeneID: [6240](#)

GeneBank [NM_001033.2](#)
Accession#:

Protein [NP_001024.1](#)
Accession#:

Gene Name: RRM1

Gene Alias: R1,RIR1,RR1

Gene ribonucleotide reductase M1
Description:

Omim ID: [180410](#)

Gene Ontology: [Hyperlink](#)

Gene Summary: This gene encodes one of two non-identical subunits that constitute ribonucleoside-diphosphate reductase, an enzyme essential for the production of deoxyribonucleotides prior to DNA synthesis in S phase of dividing cells. It is one of several genes located in the imprinted gene domain of 11p15.5, an important tumor-suppressor gene region. Alterations in this region have been associated with the Beckwith-Wiedemann syndrome, Wilms tumor, rhabdomyosarcoma, adrenocortical carcinoma, and lung, ovarian, and breast cancer. This gene may play a role in malignancies and disease that involve this region. [provided by RefSeq]

Other Designations: ribonucleoside-diphosphate reductase M1 chain,ribonucleotide reductase M1 polypeptide,ribonucleotide reductase, R1 subunit,ribonucleotide reductase, large subunit

Gene Pathway

[Glutathione metabolism](#) [Metabolic pathways](#) [Purine metabolism](#) [Pyrimidine metabolism](#)

Related Disease

[Abortion](#), [Spontaneous Adenocarcinoma](#), [Breast cancer](#), [Breast Neoplasms](#),
[Carcinoma, Large Cell](#), [Carcinoma, Non-Small-Cell Lung](#), [Carcinoma, Pancreatic Ductal](#),
[Carcinoma, Squamous Cell](#), [Esophageal Neoplasms](#), [Genetic Predisposition to Disease](#),
[Head and Neck Neoplasms](#), [Kidney Failure](#), [Chronic Lung Neoplasms](#),
[Neoplasm Recurrence, Local](#), [Neoplasms, Second Primary](#), [Neutropenia](#),
[Pancreatic Neoplasms](#)

[服務條款](#) | [隱私權政策](#) | [著作及商標](#) | [網站地圖](#)

©2016 亞諾法生技股份有限公司 Abnova Corporation. 版權所有.