



SZABO SCANDIC

Part of Europa Biosite

Produktinformation



Forschungsprodukte & Biochemikalien



Zellkultur & Verbrauchsmaterial



Diagnostik & molekulare Diagnostik



Laborgeräte & Service

Weitere Information auf den folgenden Seiten!
See the following pages for more information!



Lieferung & Zahlungsart

siehe unsere [Liefer- und Versandbedingungen](#)

Zuschläge

- Mindermengenzuschlag
- Trockeneiszuschlag
- Gefahrgutzuschlag
- Expressversand

SZABO-SCANDIC HandelsgmbH

Quellenstraße 110, A-1100 Wien

T. +43(0)1 489 3961-0

F. +43(0)1 489 3961-7

mail@szabo-scandic.com

www.szabo-scandic.com

[linkedin.com/company/szaboscandic](https://www.linkedin.com/company/szaboscandic) 

RRM2 polyclonal antibody (A01)

Catalog # : H00006241-A01

規格 : [50 uL]

List All

Specification

Product Description: Mouse polyclonal antibody raised against a partial recombinant RRM2.

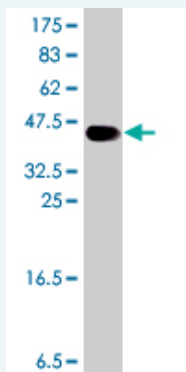
Immunogen: RRM2 (NP_001025, 1 a.a. ~ 110 a.a) partial recombinant protein with GST tag.

Sequence: MLSLRVPLAPITDPQQLQLSPLKGLSLVDKENTPPALSGTRVLASKTARR
IFQEPTPEPKTKAAAPGVEDEPLLRENPRRFVIFPIEYHDIWQMYKKAESF
WTAAEEVDLS

Host: Mouse

Reactivity: Human

Quality Control Testing: Antibody Reactive Against Recombinant Protein.



Western Blot detection against Immunogen (38.21 KDa) .

Storage Buffer: 50 % glycerol

Storage Instruction: Store at -20°C or lower. Aliquot to avoid repeated freezing and thawing.

MSDS: [Download](#)

Datasheet: [Download](#)

Applications

Western Blot (Recombinant protein)

[Protocol Download](#)

ELISA

Gene Information

Entrez GeneID: [6241](#)

GeneBank Accession#: [NM_001034](#)

Application Image

Western Blot (Recombinant protein)

ELISA

Protein Accession#: [NP_001025](#)

Gene Name: RRM2

Gene Alias: R2,RR2M

Gene Description: ribonucleotide reductase M2 polypeptide

Omim ID: [180390](#)

Gene Ontology: [Hyperlink](#)

Gene Summary: This gene encodes one of two non-identical subunits for ribonucleotide reductase. This reductase catalyzes the formation of deoxyribonucleotides from ribonucleotides. Synthesis of the encoded protein (M2) is regulated in a cell-cycle dependent fashion. Transcription from this gene can initiate from alternative promoters, which results in two isoforms that differ in the lengths of their N-termini. Related pseudogenes have been identified on chromosomes 1 and X. [provided by RefSeq]

Other Designations: ribonucleotide reductase M2 subunit

Gene Pathway

[Glutathione metabolism](#) [Metabolic pathways](#) [p53 signaling pathway](#) [Purine metabolism](#) [Pyrimidine metabolism](#)

Related Disease

[Abortion, Spontaneous](#) [Adenocarcinoma](#) [Genetic Predisposition to Disease](#) [Pancreatic Neoplasms](#)

[服務條款](#) | [隱私權政策](#) | [著作及商標](#) | [網站地圖](#)

©2016 亞諾法生技股份有限公司 Abnova Corporation. 版權所有.