



SZABO SCANDIC

Part of Europa Biosite

Produktinformation



Forschungsprodukte & Biochemikalien



Zellkultur & Verbrauchsmaterial



Diagnostik & molekulare Diagnostik



Laborgeräte & Service

Weitere Information auf den folgenden Seiten!
See the following pages for more information!



Lieferung & Zahlungsart

siehe unsere [Liefer- und Versandbedingungen](#)

Zuschläge

- Mindermengenzuschlag
- Trockeneiszuschlag
- Gefahrgutzuschlag
- Expressversand

SZABO-SCANDIC HandelsgmbH

Quellenstraße 110, A-1100 Wien

T. +43(0)1 489 3961-0

F. +43(0)1 489 3961-7

mail@szabo-scandic.com

www.szabo-scandic.com

[linkedin.com/company/szaboscandic](https://www.linkedin.com/company/szaboscandic) 

RRM2 MaxPab mouse polyclonal antibody (B01) MaxPab®

Catalog # : H00006241-B01

規格 : [50 uL]

[List All](#)

Specification

Product Description: Mouse polyclonal antibody raised against a full-length human RRM2 protein.

Immunogen: RRM2 (NP_001025, 1 a.a. ~ 389 a.a) full-length human protein.

Sequence:
 MLSLRVPLAPITDPQQQLSPLKGLSLVDKENTPPALSGTRVLASKTARR
 IFQEPTKPKTAAAAPGVEDEPLLRENPRRFVIFPIEYHDIWQMYKKAESF
 WTAEVVDLSKDIQHWESLKPEERYFISHVLAFFAASDGVNENLVERFSQ
 EVQITEARCFYGFQIAMENIHSEMYSLIDTYIKDKEREFLFNAIETMPCV
 KKKADWALRWIGDKKEATYGERVVAFAAVEGIFSGSFASIFWLKKRGLM
 PGLTFSNELISRDEGLHCDFACLMFKHLVHKPSEERVREIINAVRIEQEFL
 TEALPVKLGIMNCTLMKQYIEFVADRLMLELGF SKVFRVENPFDFMENISL
 EGKTNFFFEKRVGEYQRMGMVSSPTENSFTLDADF

Host: Mouse

Reactivity: Human

Quality Control Testing: Antibody reactive against mammalian transfected lysate.

Storage Buffer: No additive

Storage Instruction: Store at -20°C or lower. Aliquot to avoid repeated freezing and thawing.

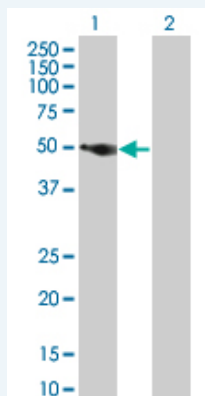
Note: For IHC and IF applications, antibody purification with Protein A will be needed prior to use.

MSDS:  [Download](#)

Datasheet:  [Download](#)

Applications

Western Blot (Transfected lysate)

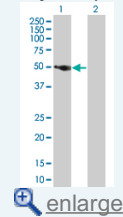


Western Blot analysis of RRM2 expression in transfected 293T cell line (H00006241-T01) by RRM2 MaxPab polyclonal antibody.

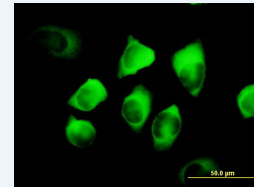
Lane 1: RRM2 transfected lysate(42.79 KDa).

Application Image

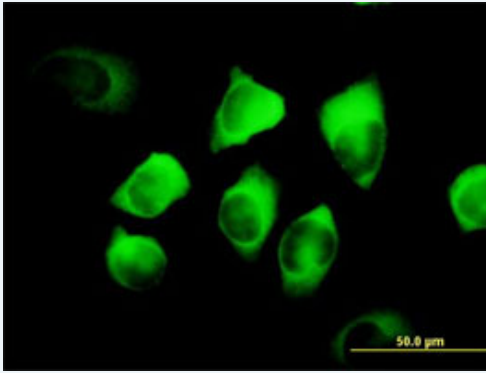
Western Blot (Transfected lysate)



Immunofluorescence



Immunofluorescence



 [enlarge this image](#)

Immunofluorescence of purified MaxPab antibody to RRM2 on HeLa cell. [antibody concentration 10 ug/ml]

Gene Information

Entrez GeneID: [6241](#)

GeneBank Accession#: [NM_001034](#)

Protein Accession#: [NP_001025](#)

Gene Name: RRM2

Gene Alias: R2,RR2M

Gene Description: ribonucleotide reductase M2 polypeptide

Omim ID: [180390](#)

Gene Ontology: [Hyperlink](#)

Gene Summary: This gene encodes one of two non-identical subunits for ribonucleotide reductase. This reductase catalyzes the formation of deoxyribonucleotides from ribonucleotides. Synthesis of the encoded protein (M2) is regulated in a cell-cycle dependent fashion. Transcription from this gene can initiate from alternative promoters, which results in two isoforms that differ in the lengths of their N-termini. Related pseudogenes have been identified on chromosomes 1 and X. [provided by RefSeq]

Other Designations: ribonucleotide reductase M2 subunit

Gene Pathway

[Glutathione metabolism](#) [Metabolic pathways](#) [p53 signaling pathway](#) [Purine metabolism](#) [Pyrimidine metabolism](#)

Related Disease

[Abortion, Spontaneous Adenocarcinoma](#) [Genetic Predisposition to Disease](#) [Pancreatic Neoplasms](#)

