



SZABO SCANDIC

Part of Europa Biosite

Produktinformation



Forschungsprodukte & Biochemikalien



Zellkultur & Verbrauchsmaterial



Diagnostik & molekulare Diagnostik



Laborgeräte & Service

Weitere Information auf den folgenden Seiten!
See the following pages for more information!



Lieferung & Zahlungsart

siehe unsere [Liefer- und Versandbedingungen](#)

Zuschläge

- Mindermengenzuschlag
- Trockeneiszuschlag
- Gefahrgutzuschlag
- Expressversand

SZABO-SCANDIC HandelsgmbH

Quellenstraße 110, A-1100 Wien

T. +43(0)1 489 3961-0

F. +43(0)1 489 3961-7

mail@szabo-scandic.com

www.szabo-scandic.com

[linkedin.com/company/szaboscandic](https://www.linkedin.com/company/szaboscandic) 

RRM2 purified MaxPab mouse polyclonal antibody (B01P) MaxPab®

Catalog # : H00006241-B01P

規格 : [50 ug]

[List All](#)

Specification

Product Description: Mouse polyclonal antibody raised against a full-length human RRM2 protein.

Immunogen: RRM2 (NP_001025.1, 1 a.a. ~ 389 a.a) full-length human protein.

Sequence:
 MLSLRVPLAPITDPQQQLSPLKGLSLVDKENTPPALSGTRVLASKTARR
 IFQEPTKPKTAAAAPGVEDEPLLRENPRRFVIFPIEYHDIWQMYKKAASF
 WTAAEVDLSKDIQHWESLKPEERYFISHVLAFFAASDGVNENLVERFSQ
 EVQITEARCFYGFQIAMENIHSEMYLLIDTYIKDPKEREFLFNAIETMPCV
 KKKADWALRWIGDKEATYGERVVAFAAVEGIFSGSFASIFWLKKRGLM
 PGLTFSNELISRDEGLHCDFACLMFKHLVHKPSEERVREIINAVRIEQEFL
 TEALPVKLGIMNCTLMKQYIEFVADRLMELGFSKVF RVENPFDFMENISL
 EGKTNFFEKRVGEYQRMGMSSPTENSFTLDADF

Host: Mouse

Reactivity: Human

Quality Control Testing: Antibody reactive against mammalian transfected lysate.

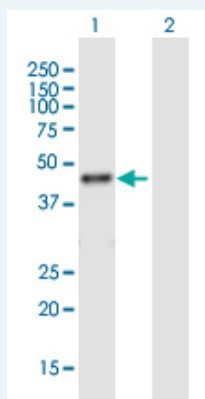
Storage Buffer: In 1x PBS, pH 7.4

Storage Instruction: Store at -20°C or lower. Aliquot to avoid repeated freezing and thawing.

Datasheet:  [Download](#)

Applications


Western Blot (Transfected lysate)



Western Blot analysis of RRM2 expression in transfected 293T cell line (H00006241-T01) by RRM2 MaxPab polyclonal antibody.

Lane 1: RRM2 transfected lysate(42.79 KDa).

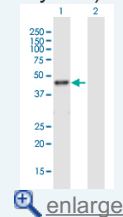
Lane 2: Non-transfected lysate.


 [Protocol Download](#)

Immunofluorescence

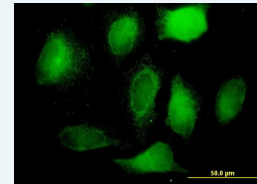
Application Image

Western Blot (Transfected lysate)

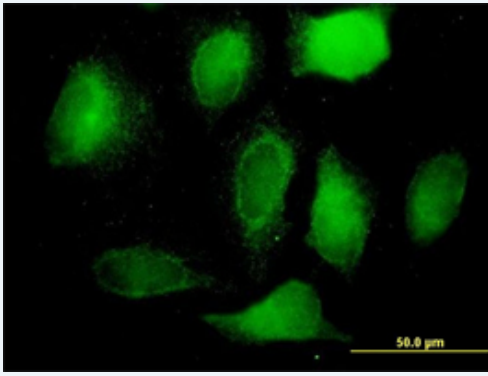


 [enlarge](#)

Immunofluorescence




 [enlarge](#)



[enlarge this image](#)

Immunofluorescence of purified MaxPab antibody to RRM2 on HeLa cell. [antibody concentration 10 ug/ml]

 [Protocol Download](#)

Gene Information

Entrez GeneID: [6241](#)

**GeneBank
Accession#:** [NM_001034.1](#)

**Protein
Accession#:** [NP_001025.1](#)

Gene Name: RRM2

Gene Alias: R2,RR2M

**Gene
Description:** ribonucleotide reductase M2 polypeptide

Omim ID: [180390](#)

Gene Ontology: [Hyperlink](#)

Gene Summary: This gene encodes one of two non-identical subunits for ribonucleotide reductase. This reductase catalyzes the formation of deoxyribonucleotides from ribonucleotides. Synthesis of the encoded protein (M2) is regulated in a cell-cycle dependent fashion. Transcription from this gene can initiate from alternative promoters, which results in two isoforms that differ in the lengths of their N-termini. Related pseudogenes have been identified on chromosomes 1 and X. [provided by RefSeq]

**Other
Designations:** ribonucleotide reductase M2 subunit

Gene Pathway

[Glutathione metabolism](#) [Metabolic pathways](#) [p53 signaling pathway](#) [Purine metabolism](#) [Pyrimidine metabolism](#)

Related Disease

[Abortion, Spontaneous](#) [Adenocarcinoma](#) [Genetic Predisposition to Disease](#) [Pancreatic Neoplasms](#)