



# SZABO SCANDIC

Part of Europa Biosite

## Produktinformation



Forschungsprodukte & Biochemikalien



Zellkultur & Verbrauchsmaterial



Diagnostik & molekulare Diagnostik



Laborgeräte & Service

Weitere Information auf den folgenden Seiten!  
See the following pages for more information!



### Lieferung & Zahlungsart

siehe unsere [Liefer- und Versandbedingungen](#)

### Zuschläge

- Mindermengenzuschlag
- Trockeneiszuschlag
- Gefahrgutzuschlag
- Expressversand

### SZABO-SCANDIC HandelsgmbH

Quellenstraße 110, A-1100 Wien

T. +43(0)1 489 3961-0

F. +43(0)1 489 3961-7

[mail@szabo-scandic.com](mailto:mail@szabo-scandic.com)

[www.szabo-scandic.com](http://www.szabo-scandic.com)

[linkedin.com/company/szaboscandic](https://www.linkedin.com/company/szaboscandic) 

## RS1 purified MaxPab mouse polyclonal antibody (B01P) MaxPab®

Catalog # : H00006247-B01P

規格 : [ 50 ug ]

[List All](#)

### Specification

**Product Description:** Mouse polyclonal antibody raised against a full-length human RS1 protein.

**Immunogen:** RS1 (AAI41639.1, 1 a.a. ~ 224 a.a) full-length human protein.

**Sequence:**  
MSRKIEGFLLLLLFGYEATLGLSSTEDEGEDPWPYQKACKCDCQGGPNA  
LWSAGATSLDCIPECPYHKPLGFESGEVTPDQITCSNPEQYVGWYSSW  
TANKARLNSQGFCAWLSKFDSSQWLQIDLKEIKVISGILTQGRCDIDE  
WMTKYSVQYRTDERLNMWYKDKQTGNRVFYGNSDRSTVQNLLRPPII  
SRFIRLIPLGWHVRIARMELLECVSKCA

**Host:** Mouse

**Reactivity:** Human

**Quality Control Testing:** Antibody reactive against mammalian transfected lysate.

**Storage Buffer:** In 1x PBS, pH 7.4

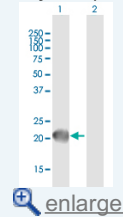
**Storage Instruction:** Store at -20°C or lower. Aliquot to avoid repeated freezing and thawing.


**MSDS:**  [Download](#)

**Datasheet:**  [Download](#)

### Application Image

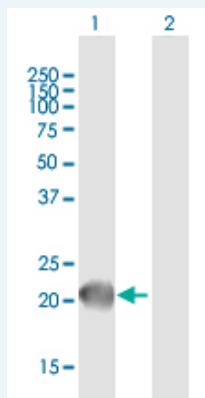
Western Blot (Transfected lysate)



 [enlarge](#)

### Applications

Western Blot (Transfected lysate)



Western Blot analysis of RS1 expression in transfected 293T cell line (H00006247-T01) by RS1 MaxPab polyclonal antibody.

Lane 1: RS1 transfected lysate(24.64 KDa).

Lane 2: Non-transfected lysate.

 [Protocol Download](#)

### Gene Information

Entrez GeneID: [6247](#)

GeneBank [BC141638](#)  
Accession#:

Protein [AAI41639.1](#)  
Accession#:

Gene Name: RS1

Gene Alias: RS,XLRS1

Gene Description: retinoschisin 1

Omim ID: [312700](#)

Gene Ontology: [Hyperlink](#)

**Gene Summary:** This gene encodes an extracellular protein that plays a crucial role in the cellular organization of the retina. The encoded protein is assembled and secreted from photoreceptors and bipolar cells as a homo-oligomeric protein complex. Mutations in this gene are responsible for X-linked retinoschisis, a common, early-onset macular degeneration in males that results in a splitting of the inner layers of the retina and severe loss in vision. [provided by RefSeq]

Other Designations: OTTHUMP00000023004,X-linked juvenile retinoschisis protein,retinoschisis (X-linked, juvenile) 1

#### Related Disease

[Retinal Diseases](#) [Retinoschisis](#)

[服務條款](#) | [隱私權政策](#) | [著作及商標](#) | [網站地圖](#)

©2016 亞諾法生技股份有限公司 Abnova Corporation. 版權所有.